



# Quick Installation

This Quick Installation is meant to help you install the product quickly and easily. For detailed instructions on installation, configuration, and further setup options, please consult the User Guide.

Instant Wireless® Series

## Dual-Band Wireless A+G Broadband Router



WRT55AG

There are two ways to configure the Router. Choose one of the following methods:

- **Run the Setup CD-ROM** - It is strongly *recommended* that you use the Setup CD-ROM to install the Router. Insert the Setup CD-ROM into the CD-ROM drive, and follow the on-screen instructions.
- **Use this Quick Installation guide** - If you wish, you can use the Router's web-based utility to install the Router. Proceed to Step 1, and follow the Quick Installation's instructions.

### Package Contents

- One Dual-Band Wireless A+G Broadband Router (1)
- One Power Adapter (2)
- One Category 5 Ethernet Network Cable (3)
- One Setup CD-ROM with User Guide (4)
- One Symantec Internet Security CD-ROM
- One Quick Installation
- One Registration Card



## Application Diagram

This application diagram shows a typical scenario that uses the Dual-Band Wireless A+G Broadband Router. Steps 1, 2, and 3 will explain how to connect the Router to a PC with an Ethernet adapter, configure the PC(s), and configure the Router's basic settings.



## 1 Connect the Dual-Band Wireless A+G Broadband Router

- Before you begin, make sure that you have the setup information for your specific type of Internet connection. The installation technician from your ISP should have left this information with you after installing your broadband connection. If not, you can call your ISP to request the settings.
- Make sure that all of your network's hardware is powered off, including the Router, PCs, and cable or DSL modem.

- Connect one end of an Ethernet network cable to one of the LAN ports (labeled 1-4) on the back of the Router, and the other end to an Ethernet port on a PC.



Repeat this step to connect more PCs or network devices to the Router.

- Connect a different Ethernet network cable from your cable or DSL modem to the Internet port on the Router's rear panel. This is the only port that will work for your modem connection.



- Power on the cable or DSL modem.

- Connect the power adapter to the Power port on the rear panel of the Router, and then plug the power adapter into a power outlet.

**Note:** You should always plug the Router's power adapter into a power strip with surge protection.

The **Power** LED on the front panel will light up green as soon as the power adapter is connected properly.

The **Diag** LED will light up red for a few seconds when the Router goes through its self-diagnostic test. This LED will turn off when the self-test is complete. If it does not turn off, refer to "Appendix A: Troubleshooting" of the User Guide on the Setup CD-ROM.

- Power on one of your PCs.

Proceed to Step 2.

## 2 Configure the PCs

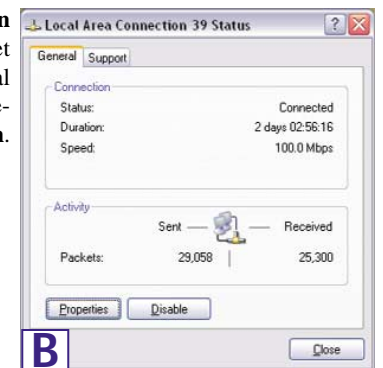
Before setting up the Router, make sure your PCs are configured to obtain an IP (or TCP/IP) address automatically from the Router.

For Windows 98, Millennium, and XP using the default interface, refer to the User Guide on the Setup CD-ROM or your Windows documentation.

The following instructions apply only to Windows 2000 or XP using the Classic interface (in which the icons and menus look like previous Windows versions).

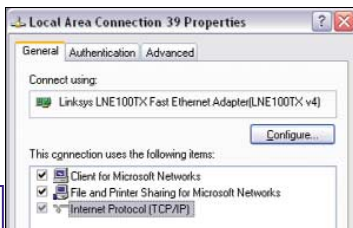
- Click the **Start** button and then the **Control Panel** icon. Click the **Network and Internet Connections** icon. Then click the **Network Connections** icon.

- Select the **Local Area Connection** icon for the applicable Ethernet adapter (usually it is the first Local Area Connection listed). Double-click the **Local Area Connection**. Click the **Properties** button.



Continued on back

C. Make sure the box next to *Internet Protocol (TCP/IP)* is checked. Highlight **Internet Protocol (TCP/IP)**, and click the **Properties** button.



D. Select **Obtain an IP address automatically**. Once the new window appears, click the **OK** button. Click the **OK** button again to complete the PC configuration.



E. Restart your computer.

Proceed to Step 3.

### 3 Configure the Dual-Band Wireless A+G Broadband Router

Refer to the table below, if you need the default settings during configuration.

#### Default Settings for the Wireless A+G Broadband Router

Basic Settings	Default
Internet Configuration Type	Automatic Configuration - DHCP
Router's IP Address	192.168.1.1
Router's Subnet Mask	255.255.255.0
Router's Password	admin (lowercase)
DHCP Settings	
DHCP Server	Enable
DHCP Starting IP Address	192.168.1.100
Number of DHCP Client Users	50
5GHz Wireless Settings	
SSID	linksys-a
Channel	52
WEP (Encryption)	Disable
2.4 GHz Wireless Settings	
SSID	linksys-g
Channel	6
WEP (Encryption)	Disable

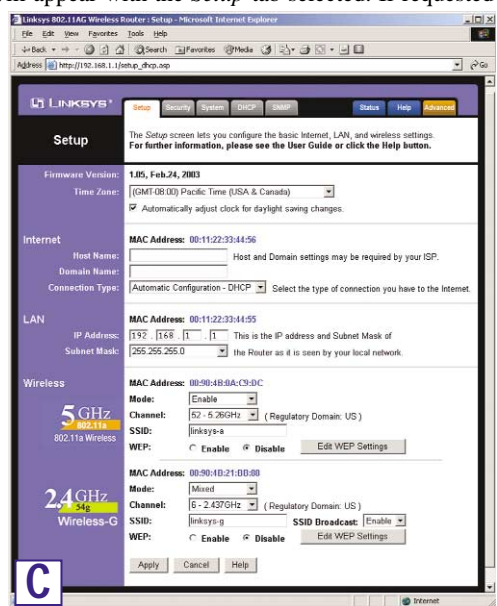
These instructions will show you how to configure the Router. You only need to configure the Router once using any computer you have set up.

A. Open your web browser. Enter **http://192.168.1.1** in its *Address* field. Press the **Enter** key.



B. An *Enter Network Password* window will appear. Leave the *User Name* field empty, and enter the default password, **admin**, in lowercase letters in the *Password* field. (For added security, later you should change the default to your own, using the *Password* tab of the web-based utility). Then click the **OK** button.

C. The web-based utility will appear with the *Setup* tab selected. If requested by your ISP (usually cable ISPs), complete the *Host Name* and *Domain Name* fields. Other-wise, leave them blank.



D. For the *Configuration Type* setting, four connections types are offered through the drop-down menu. Each *Setup* screen and available features will differ depending on which connection type you select.

#### Internet Configuration Type

**Automatic Configuration - DHCP:** If you are connecting through DHCP or a dynamic IP address from your ISP, keep this default setting.

**Static IP:** If your ISP assigns you a static IP address, select **Static IP** from the drop-down menu. Complete the *Internet IP Address*, *Subnet Mask*, *Default Gateway*, and *DNS* fields. You need to enter at least one DNS address.

**PPPoE:** If you are connecting through PPPoE, select **PPPoE** from the drop-down menu. Complete the *User Name* and *Password* fields.

**PPTP:** PPTP is a service used in Europe only. If you are using a PPTP connection, check with your ISP for the necessary setup information.

When you are finished entering your Internet connection settings, click the **Apply** button to save your changes.

E. To configure the Router for your wireless network, select the appropriate network mode.

#### Mode 802.11a

The default setting is **Enable**. To disable wireless networking for 802.11a, select **Disable**.

#### Mode 54g

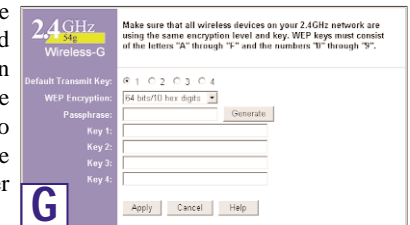
**Mixed:** If you have Wireless-G and 802.11b devices in your network, then keep the default setting, **Mixed**.

**G-Only:** If you have only Wireless-G devices, select **G-Only**.

**Disable:** To disable wireless networking for 54g and 802.11b, select **Disable**.

F. Customize the **SSID** and **Channel** settings as needed. For added security, you should change the default SSID (**linksys-a** or **linksys-g**) to a unique name and enable WEP encryption in step G.

G. To enable WEP encryption (recommended), click the **Enable** radio button next to *WEP*. Then click the **Edit WEP Settings** button, and customize the WEP encryption settings as needed (see Figure G). Click the **Apply** button to save your settings. For more information, refer to the User Guide on the Setup CD-ROM.



H. On the *Setup* screen, click the **Apply** button to save your settings. Close the web browser.

I. Restart your computers so that they can obtain the Router's new settings.

J. Test the setup by opening your web browser from any computer and entering <http://www.linksys.com/registration>.



For additional information or troubleshooting help, refer to the User Guide on the Setup CD-ROM. You can also call or email for further support.

24-hour Technical Support 800-326-7114 (toll-free from US or Canada)  
 E-mail Support support@linksys.com  
 Website http://www.linksys.com or http://support.linksys.com

RMA (Return Merchandise Authorization) http://www.linksys.com/support  
 FTP Site ftp://ftp.linksys.com  
 Sales Information 800-546-5797 (800-LINKSYS)

WRT55AG-Q1-30224NC BW