

Instant Wireless[®] Series Network PC Card

Model No.: WPC11

Quick Installation

for Windows 2000

This sheet will guide you through the basic steps needed to install the Network PC Card onto your network. If you have any problems during installation, refer to the **Troubleshooting** section of the **User Guide**.

Installing The Network PC Card In Your Notebook PC

Note: If you purchased a Linksys Network PCI Adapter Card with your Network PC Card and you are installing them in a Desktop PC, refer to the Quick Install that came with the Adapter Card.

1. **Locate an available Type II or Type III PCMCIA slot** on your notebook computer.
2. **With the PCMCIA adapter's 68-pin connector facing the PCMCIA slot and the "Network PC Card" label facing up**, slide the PCMCIA adapter completely into the PCMCIA slot.

The Hardware Installation is complete.

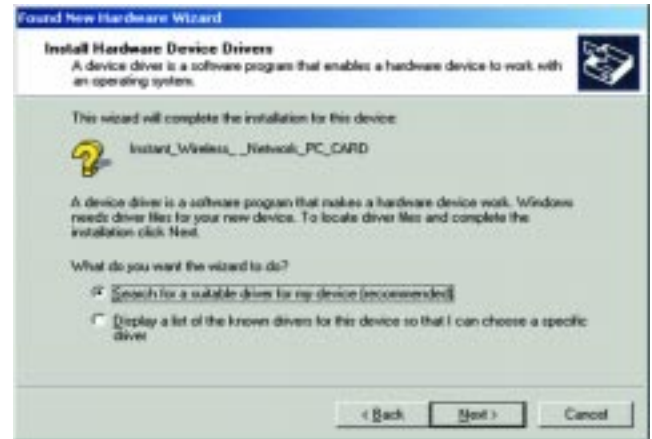
Installing Your Network PC Card Drivers for Windows 2000

Note: Do not click **Cancel** or **Skip** at any time during the installation. Doing so will prevent the driver from being properly installed on your PC.

1. Windows 2000 will automatically identify the Network PC Card, once it is connected to the PC, and prompt you to install the necessary driver. Make sure that **Setup Utility CD** is inserted into your CD-ROM drive and click the **Next** button on the **Found New Hardware Wizard** screen to proceed.



2. Select **Search for a suitable driver...** and click the **Next** button. This will search for the Windows 2000 driver.



3. Select **Specify a location** and click the **Next** button. Enter **"D:\wpc11-wdt11\win2000"** in the drop down box and click the **OK** button.
4. Windows will now search for the driver. After Windows acknowledges finding the driver, click the **Next** button.
5. The **Digital Signature Not Found** does not mean that there is a problem. Click the **Yes** button to continue.



6. Windows will now install the driver files. Click the **Finish** button when completed. Windows may prompt you for necessary files from your Windows 2000 CD. Insert your Windows 2000 CD if requested.

The installation is complete. For information on using your PC with your network, refer to Configuring the Network PC Card for Windows 2000 section of your User Guide.