

LINKSYS®

Quick Installation

For Windows 98SE, Me, and 2000 *ONLY*

This Quick Installation is meant to help you install the product quickly and easily. For detailed instructions on installation, configuration, and further setup options, please consult the User Guide.

Instant Wireless® Series

Wireless USB Network Adapter



WUSB11 ver. 2.6

Minimum Requirements

- One PC with the following:
- 200MHz or Faster Processor
 - 64MB RAM Recommended
 - Windows 98SE, Me, 2000, or XP
 - Available USB Port
 - CD-ROM Drive

Package Contents

- One Wireless USB Network Adapter (1)
- One USB Cable (2)
- One Wall Mount (3)
- One Setup CD-ROM with User Guide (4)
- One Quick Installation
- One Registration Card



1 Installing the Wireless USB Network Adapter Software

Note to Windows 98SE, Me, and 2000 users: You must run the Setup Wizard to install the software before installing the hardware.

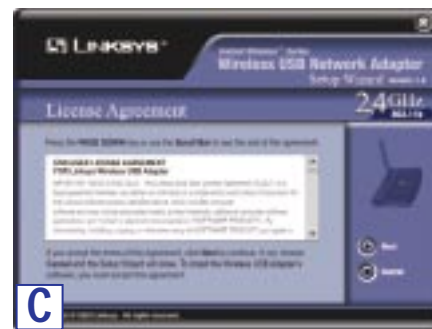
Note to Windows XP users: Do NOT run the Setup Wizard. Refer to the Quick Installation for Windows XP.

A. Insert the Setup CD-ROM into your CD-ROM drive. The Setup Wizard should run automatically, and the *Welcome* screen should appear. If it does not, click **Start** and choose **Run**. In the field that appears, enter **D:\setup.exe** (if "D" is the letter of your CD-ROM drive).

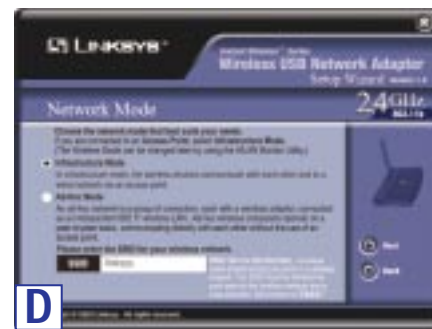


B. Click the **Install** button.

C. After reading the License Agreement, click **Next** if you agree, or **Cancel** to end the installation.



D. The Setup Wizard will ask you to choose a network mode. Click the **Infrastructure Mode** radio button if you want your wireless computers to network with computers on your wired network using a wireless access point. Click the **Ad-Hoc Mode** radio button if you want multiple wireless computers to network directly with each other.

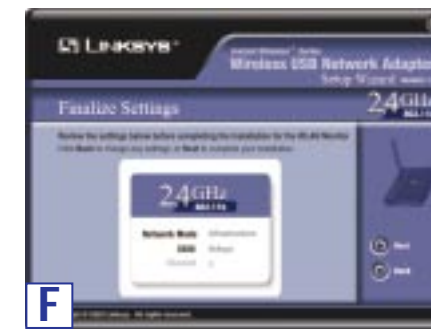


In the *SSID* field, enter the *SSID* of your wireless network. The *SSID* must be identical for all devices in the network. The default setting is **linksys** (all lowercase). Click **Next**.

E. If you chose Infrastructure Mode, go to **Step F** now. If you chose Ad-Hoc Mode, select the correct operating channel for your network. The channel you choose should match the channel set on the other devices in your wireless network. Click **Next** and go to **Step F**.



F. The Setup Wizard will ask you to review your settings before it starts to install files. Click **Next** if you are satisfied with your settings, or click **Back** to change any settings.



Continued on back

G. After the software has been successfully installed, you will see Figure G. Click **Exit**.



G

Proceed to Step 2.

2 Connecting the Wireless USB Network Adapter to Your PC

Note: You must run the Setup Wizard to install the software before installing the hardware.

A. The Adapter comes with the USB cable you will use to connect the Adapter to your PC. (See Figure A.1.)



A.1

Connect one end of the USB cable to the USB port of the Adapter (see Figure A.2).

Connect the other end of the USB cable to one of the USB ports on your computer (see Figure A.3).



A.2



A.3

B. The Power LED should light up when the Adapter is plugged in. (Make sure your PC is powered on.)



B

C. Raise the antenna. Make sure the antenna is positioned straight up into the air, at a 90° angle from the Adapter. This ensures optimum wireless operating range and performance.



C

D. After the Adapter has been physically connected to your computer, Windows will detect the new hardware. The Wireless USB Network Adapter WLAN Monitor icon will appear in your system tray (see Figure D).

If you want to use the WLAN Monitor to check the link information, search for available wireless networks, or make additional configuration changes, then double-click the icon.

Congratulations! The installation of the Wireless USB Network Adapter is complete.

For more details, advanced configuration, or troubleshooting help, refer to the User Guide on the Setup CD-ROM.

For additional troubleshooting help, obtain assistance from one of the following resources:

Technical Support	800-326-7114 (toll-free from US or Canada)
E-mail Support	support@linksys.com
Website	http://www.linksys.com or http://support.linksys.com
FTP Site	ftp://ftp.linksys.com
Sales Information	800-546-5797 (800-LINKSYS)