

QUICK INSTALLATION

**Compact Wireless-G
Broadband Router**

Model: WRT54GC (EU/UK)



1 Installation

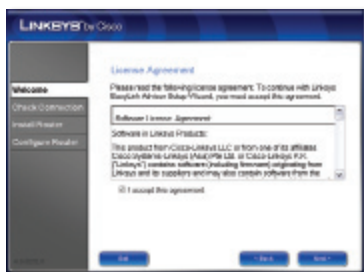
- A. Insert the Setup CD-ROM into your CD-ROM drive.



- B. If asked, select your preferred language and click **OK**. Click **Start Setup** on the first *Welcome* screen. Then to begin installation, click **Next**.



- C. Select **I accept this agreement**. Click **Next**.



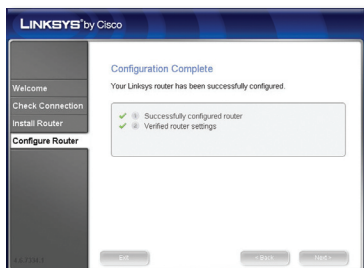
- D. The Setup Wizard checks your connection. Click **Next**.



- E. The Setup Wizard displays a series of screens that walk you through the Router's physical installation. Follow the instructions in these screens.



- F. Wait until the Setup Wizard configures the Router. When the *Configuration Complete* screen appears, click **Next**.



- G. Follow the instructions in the remaining screens until you see the *Network Configured* screen. Click on **Learn about connecting other computers to this network** to view sharing options, or click **Next** to close the Setup Wizard.



Congratulations! Setup is complete.



NOTE: For more advanced settings and security options, refer to the User Guide on the CD-ROM.

For additional information or troubleshooting help, refer to the User Guide on the CD-ROM. Additional support is also available by phone or online.

Website
<http://www.linksys.eu>

Product Registration
<http://www.linksys.com/registration>

Linksys is a registered trademark or trademark of Cisco Systems, Inc. and/or its affiliates in the U.S. and certain other countries. Copyright © 2008 Cisco Systems, Inc. All rights reserved. Other brands and product names are trademarks or registered trademarks of their respective holders.

LINKSYS® by Cisco

