

QUICK INSTALLATION GUIDE

Wireless-N Access Point with Dual-Band

Model: WAP610N



Package Contents

- Wireless-N Access Point with Dual-Band
- Setup Software and User Guide on CD-ROM
- Quick Installation Guide
- Network Cable
- Power Adapter

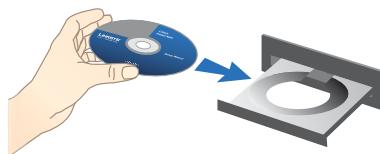
Installation

Run the Setup Wizard on the enclosed CD to install and set up the Access Point. Do not install the Access Point in your computer until instructed to do so by the Setup Wizard, or the Access Point will not install correctly.

- A.** Insert the Setup Wizard CD into your CD-ROM drive.



NOTE: Windows or other personal firewalls may ask for permission to run the software or program. You will need to allow the software to run in order to continue.



Insert the CD-ROM

- B.** The *Welcome* screen appears.

Click **Start Setup**



- C.** This *Welcome* screen appears.

Click **Next**.



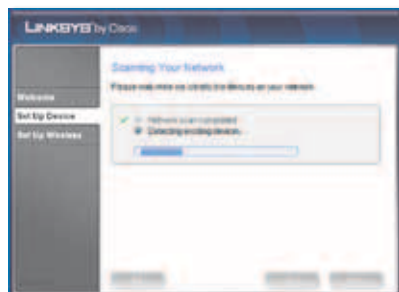
D. Read the License Agreement.

To accept the terms in the License Agreement, select **I accept this agreement**.

Click **Next**.



E. Please wait while the Setup Wizard prepares to set up your Access Point.



F. Connect one end of the supplied Ethernet network cable to the Ethernet port on your Access Point.

Click **Next**.



G. Connect the other end of the Ethernet network cable to an open Ethernet port on your Router.

Click **Next**.



- H. Connect the supplied power cable to the power port on the Access Point.

Click **Next**.



- I. Plug the other end of the power adapter into an electrical outlet.

Click **Next**.



- J. Please wait until the power light is continuously lit

Click **Next**.

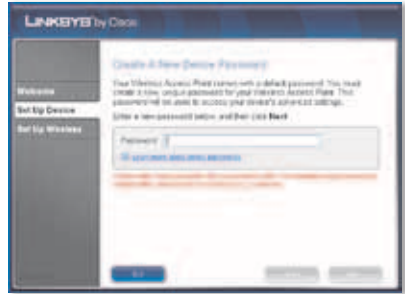


- K. Please wait while the Setup Wizard searches for your Access Point.



- L. Enter a password to help prevent unauthorized configuration of your Access Point.

Click **Next**.



- M. The Setup Wizard will apply the settings from your existing router to your Access Point. (If you don't see this screen, continue to step N.)

If you don't click *Use different settings to create a new wireless network*, continue to step Q.

Click **Next**.



- N. Enter a name for your wireless network.

Click **Next**.

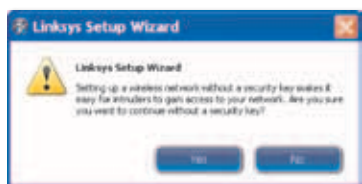
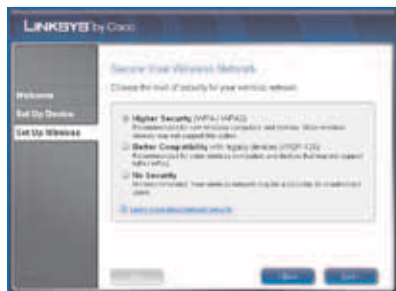


- O. You will need to select the security level for your network.

If your network uses WPA or WPA2 wireless security, select **Higher Security**, and click **Next**.

If your network uses WEP wireless security, select **Better Compatibility**, and click **Next**.

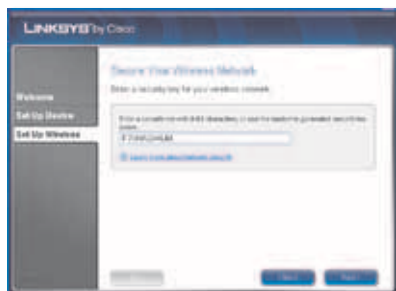
If your network does not use wireless security, select **No Security**, and click **Next**. You will be asked to verify that you don't want wireless security. If you don't want wireless security, click **Yes** and continue to step Q.



NOTE: We recommend that you use the strongest available wireless security for your network.

- P. Enter a security key for your wireless network.

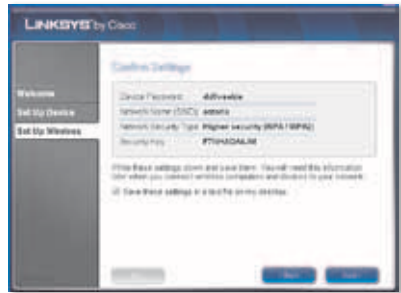
Click **Next**.



- Q.** Your network settings information appears for you to confirm.

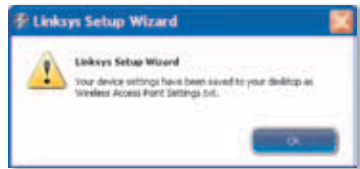
To save your settings in a text file on your desktop, keep the default, *Save these settings in a text file on my desktop.*

Click **Next**.



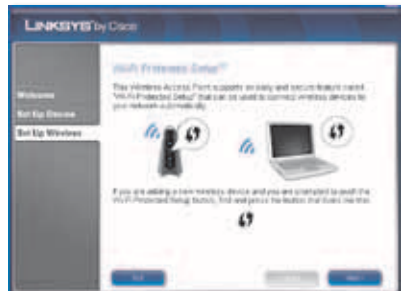
- R.** Your settings have been saved to your desktop as Wireless Access Point Settings.txt (a text file).

Click **OK**.



- S.** Wi-Fi Protected Setup information is available on this screen.

Click **Next**.



- T.** The Access Point is configured to your wireless network. You may now connect other devices, if desired.

Click **Finish**.



Congratulations! Setup is complete.



NOTE: You can configure this device as a 5GHz Access Point, if you have other 5GHz devices to connect to it. Refer to the User Guide, *Chapter 3: Advanced Configuration* for information on how to access the browser-based utility and the Setup>Basic Wireless Settings screen to change the wireless band. The User Guide is available on the CD-ROM and at www.linksysbycisco.com.



Our packaging and documents are made from minimum 80% recycled content and printed with vegetable-based ink.

For additional information or troubleshooting help, refer to the User Guide on the CD-ROM. Additional support is also available by phone or online.

Website

<http://www.linksysbycisco.com>

24-Hour Technical Support

800-326-7114

Support

<http://www.linksysbycisco.com/support>

Sales Information

800-546-5797 (800-LINKSYS)

Linksys, Cisco and the Cisco Logo are registered trademarks or trademarks of Cisco Systems, Inc. and/or its affiliates in the U.S. and certain other countries. Other brands and product names are trademarks or registered trademarks of their respective holders. Copyright © 2009 Cisco Systems, Inc. All rights reserved.

LINKSYS® by Cisco

