

10/100 Compact USB 2.0 Network Adapter

Quick Installation

1 Connecting the Compact USB 2.0 10/100 Network Adapter to Your PC



- A** With your PC turned off, insert the Adapter's USB end (or the end of the USB extension cable connected to the Adapter) into your PC's USB port or USB hub.
- B** Insert one end of an Ethernet network cable into the Adapter's RJ-45 port.
- C** Insert the other end of the Ethernet network cable into an Ethernet networking device.

NOTE: For maximum speed, connect the Adapter to a USB 2.0 port on your PC. If you are using a hub, make sure it is a USB 2.0 hub.

Proceed to Step 2.

2 Installing the Driver for the Compact USB 2.0 10/100 Network Adapter

After connecting the Adapter to your computer's USB port or hub, follow these instructions to install the hardware device driver.

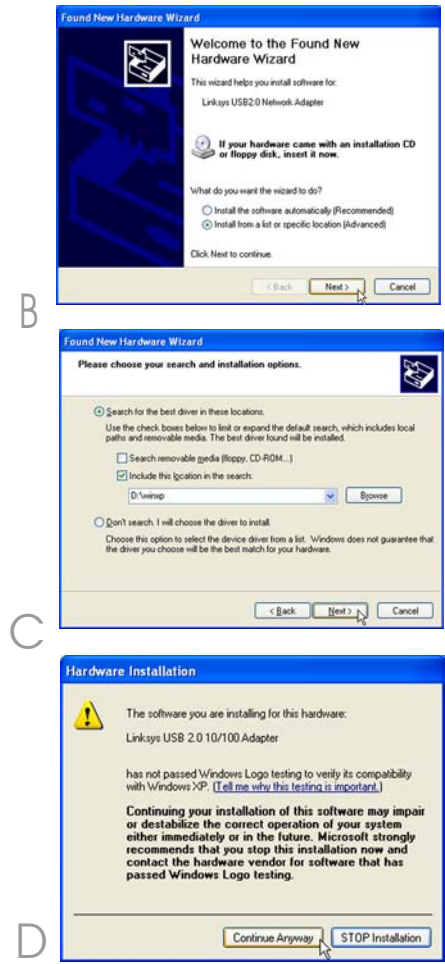
The installation procedures for the device driver vary depending on your PC's operating system, so make sure to follow the instructions for your operating system.

NOTE: Do not click Cancel at any time during the installation process. Doing so will prevent your driver from being properly installed on your PC.

NOTE: Throughout this document, it is assumed that "D" is the letter of your CD-ROM drive.

Windows XP

- A** If you haven't already, start your computer.
- B** Windows XP will detect the Adapter connected to your computer and display the *Welcome to the Found New Hardware Wizard* screen. Select **Install from a list or specific location (Advanced)**, and insert the Driver CD into the CD-ROM drive. Then Click **Next**.
- C** Select **Search for the best driver in these locations**. Only select **Include this location in the search**, and enter **D:\winxp** in the field. Click **Next**.
- D** When you are notified that the driver has not passed Windows Logo testing, click **Continue Anyway**.

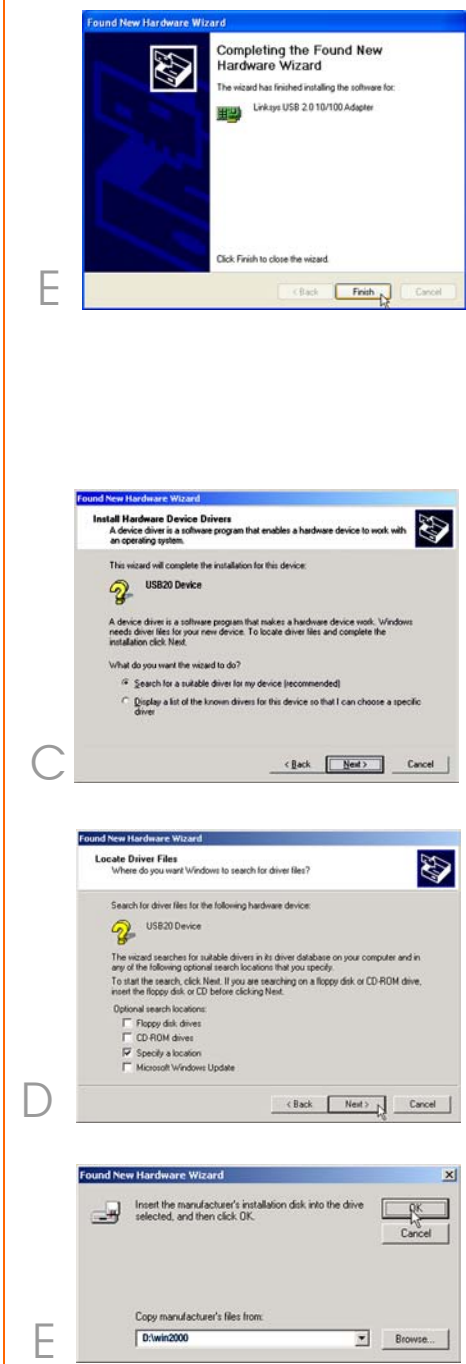


- E** The Completing the *Found New Hardware Wizard* screen will appear. Click **Finish**. Remove the Driver CD from the drive.

Congratulations! The installation of the Compact USB 2.0 10/100 Network Adapter is complete.

Windows 2000

- A** If you haven't already, start your computer.
- B** Windows 2000 will automatically detect the Adapter connected to your computer. When the *Welcome to the Found New Hardware Wizard* screen appears, insert the Driver CD into the CD-ROM drive. Then Click **Next**.
- C** Select **Search for a suitable driver for my device (recommended)**. Click **Next**.
- D** Select **Specify a location** to find the correct driver. Click **Next** to continue.
- E** In the *Copy manufacturer's files from:* field, enter **D:\win2000**. Then click **OK**.



F The *Driver Files Search Results* screen will appear. Click **Next**.

For Windows 2000, you may be informed that a digital signature has not been found. Click **Yes**.

G The *Completing the Found New Hardware Wizard* screen will appear. Click **Finish**, and remove the Driver CD from the CD-ROM drive.

Congratulations! The installation of the Compact USB 2.0 10/100 Network Adapter is complete.

Windows Millenium

A If you haven't already, start your computer.

B Windows Millennium will automatically detect the Adapter connected to your PC. When the Add New Hardware Wizard screen appears, insert the Driver CD into your CD-ROM drive, and select Specify the location of the driver (Advanced). Click Next.



F

C Select **Search for the best driver for your device (Recommended)**. You MUST remove the checkmark from the box next to Removable Media. Select **Specify a location:**, and enter **D:\winME** in the field provided. Then click **Next**.

D When Windows notifies you that it is ready to install the driver files, click **Next**.

When Windows has completed copying the driver files, click **Finish**.

E When asked if you want to restart your computer, remove the Driver CD from the CD-ROM drive, and click **Yes**. If Windows does not ask you to restart your PC, restart your PC anyway.

Congratulations! The installation of the Compact USB 2.0 10/100 Network Adapter is complete.



C



D



E

Windows 98

A If you haven't already, start your computer.

B Windows 98 will automatically detect the Adapter connected to your PC. When the first *Add New Hardware Wizard* screen appears, insert the Driver CD into your CD-ROM drive, and Click **Next**.

C Select **Search for the best driver for your device (Recommended)**, and click **Next**.

D Select **Specify a location:** to find the correct driver, and enter **D:\win98** in the field provided. Click **Next** to continue.

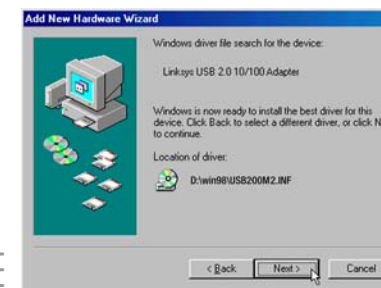
E When Windows notifies you that it is ready to install the driver files, Click **Next** to continue.



C



D



E

F Windows will begin copying the driver files to your computer. If Windows asks you for the original Windows CD-ROM, insert the CD-ROM, and direct Windows to the proper location for the CD-ROM (e.g., D:\). If you have the Windows 98 setup files already installed in a directory, click **OK**, and enter C:\windows\options\cabs (if "C" is the letter of your hard drive) in the windows that appears. When Windows has completed copying the files, Click **Finish**.

G When asked if you want to restart your computer, remove the Driver CD from the CD-ROM drive, and Click **Yes**. If Windows does not ask you to restart your PC, restart anyway.

Congratulations! The installation of the Compact USB 2.0 10/100 Network Adapter is complete.



F

LINKSYS®

A Division of Cisco Systems, Inc.

For additional information or troubleshooting help, refer to the User Guide on the Setup CD-ROM. You can also call or email for further support.

24-hour Technical Support
800-326-7114
(toll-free from US or Canada)

E-mail Support
support@linksys.com

Website
<http://www.linksys.com> or
<http://support.linksys.com>

RMA (Return Merchandise Authorization)
<http://www.linksys.com/support>

FTP Site
<ftp://ftp.linksys.com>

Sales Information
800-546-5797 (800-LINKSYS)

Linksys is a registered trademark or trademark of Cisco Systems, Inc. and/or its affiliates in the U.S. and certain other countries. Copyright © 2005 Cisco Systems, Inc. All rights reserved.