



Package Contents

- Wireless-B Access Point
- Power Adapter
- Setup CD-ROM with User Guide
- Quick Installation Guide
- Ethernet Network Cable
- Registration Card

2.4GHz
802.11b

Wireless-B
Access Point

Quick Installation

Wireless



1 Connect the Wireless-B Access Point

- A** Locate an optimum location for the Access Point. The best place for the Access Point is usually at the center of your wireless network, with line of sight to your wireless devices. Usually, the higher you place the Access Point, the better the performance will be.
- B** Fix the direction of the antennas. Both should be perpendicular to the ground and parallel to each other.
- C** Connect the included Ethernet network cable to the Access Point. Connect the other end of the network cable to a switch or hub. The Access Point will then be connected to your wired network.
- D** Connect the power adapter to the Access Point's Power port. Only use the power adapter supplied with the Access Point. Use of a different adapter may result in product damage.

NOTE: In order for all other wireless devices to communicate with the Access Point, those devices must be set to infrastructure mode. If any wireless devices are configured as ad-hoc mode, they WILL NOT be recognized by the Access Point.



2 Set up the Wireless-B Access Point

The Setup Wizard will take you through all the steps necessary to configure the Access Point, so your wireless and wired networks will be able to communicate and share resources.

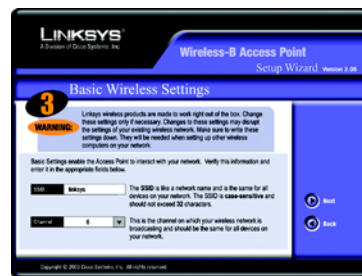
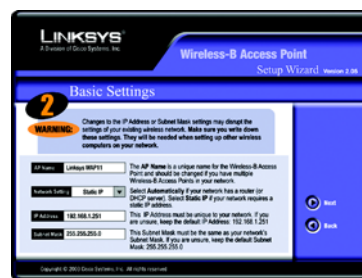
- A** Insert the Setup CD-ROM into your PC's CD-ROM drive. Optimally, your PC should be on your wired network.
- B** The *Welcome* screen should appear on your monitor. If it does not, click **Start** and choose **Run**. In the field that appears, enter **D:\setup.exe** (if "D" is the letter of your CD-ROM drive). Then click **Setup**.
- C** Make sure the Access Point is connected to your wired network, so you can configure the Access Point through any PC on your wired network. Click **Next**.
- D** The next screen will display a list of access points on your network, along with the status information for each access point. Select the Access Point you want to configure by clicking its name. Then click **Yes**.



E On the *Enter Network Password* screen, enter the Access Point's default password, **admin**, in the *Password* field. Then click **OK**.

F The *Basic Settings* screen will appear. Enter a unique name in the *AP Name* field. From the *Network Setting* drop-down menu, select **Automatically** if your network has a router or other DHCP server, or select **Static IP** if your network does not have a DHCP server. If you selected *Static IP*, enter an IP Address and Subnet Mask appropriate for your network. Click **Next**.

G The *Basic Wireless Settings* screen will appear. Enter your wireless network's SSID, which is like your network's name. Select the channel at which the network broadcasts its wireless signal. Then click **Next**.



H The *Security* screen will appear. Select the level of Wired Equivalent Privacy (WEP) encryption for your wireless network.

To automatically generate a WEP key, enter a passphrase. If you want to manually enter the WEP key, leave the *Passphrase* field blank.

Then click **Next**.

I The second *Security* screen shows the WEP key. If you entered a passphrase, then the *Key 1* field will display the automatically generated WEP key. If you did not enter a passphrase, then enter a WEP key in the *Key 1* field. Click **Next**.

J On the next screen, review your settings. If they are correct, click **Yes** to save these settings. If there are any problems with the settings, click **No** to exit the Setup Wizard.



K At this point, the configuration performed with the Setup Wizard is complete. To configure any other access points in your network, you can run this Setup Wizard again. Click **Exit** to exit the Setup Wizard.

Congratulations! The installation of the Wireless-B Access Point is complete.



LINKSYS[®]
A Division of Cisco Systems, Inc.

For additional information or troubleshooting help, refer to the User Guide on the Setup CD-ROM. You can also call or e-mail for further support.

24-hour Technical Support
800-326-7114
(toll-free from US or Canada)

E-mail Support
support@linksys.com

Website
http://www.linksys.com or
http://support.linksys.com

RMA (Return Merchandise Authorization)
http://www.linksys.com/support

FTP Site
ftp://ftp.linksys.com

Sales Information
800-546-5797 (800-LINKSYS)

Linksys is a registered trademark or trademark of Cisco Systems, Inc. and/or its affiliates in the U.S. and certain other countries. Copyright © 2003 Cisco Systems, Inc. All rights reserved.