



Quick Installation

For Windows 98SE, Me, and 2000 *ONLY*

This Quick Installation is meant to help you install the product quickly and easily. For detailed instructions on installation, configuration, and further setup options, please consult the User Guide.

Instant Wireless® Series

Wireless-B Notebook Adapter



WPC11 ver. 4

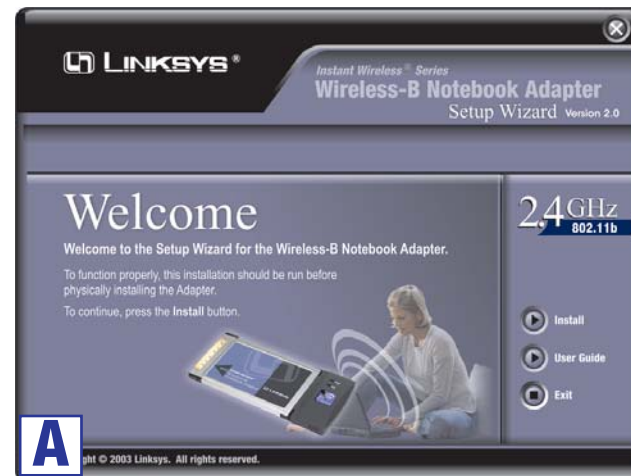


Package Contents

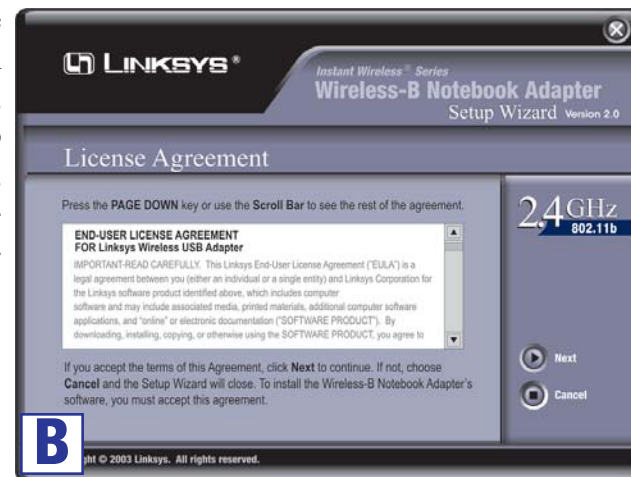
- One Setup Wizard CD-ROM with User Guide (1)
- One Wireless-B Notebook Adapter (2)
- One Quick Installation guide
- One Registration Card

1 Driver Installation and Configuration for Windows 98SE, Me, and 2000

A. To install the Adapter, click the **Install** button on the *Welcome* screen.

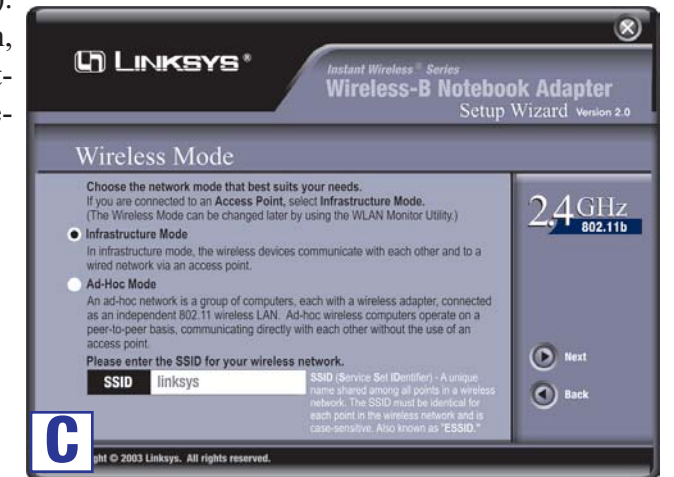


B. After reading the License Agreement on the following screen, click the **Next** button to continue the installation, or click the **Cancel** button to end the installation.



C. The next screen in the Setup Wizard will ask you to choose a wireless mode. Click the **Infrastructure Mode** radio button if you want your wireless computers to network with computers on your wired network using a wireless access point. Click the **Ad-Hoc Mode** radio button if you want multiple wireless computers to network directly with each other.

In the *SSID* field, enter the **SSID** of your wireless network. The SSID must be identical for all devices in the network. The default setting is **linksys** (all lowercase). Click the **Next** button, or click the **Back** button to return to the previous page.



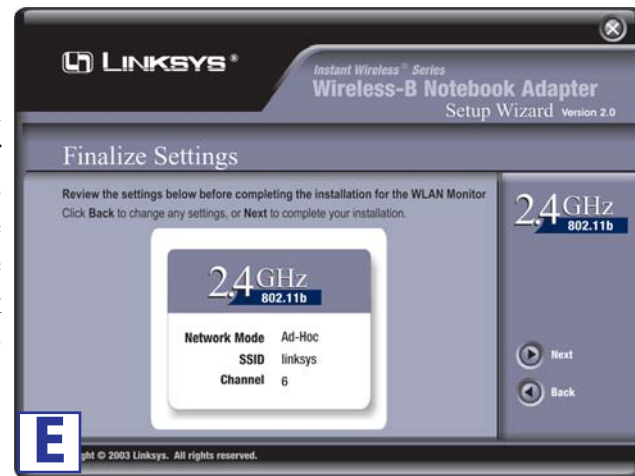
Continued on back

D. If you chose Infrastructure Mode, go to **E** now. If you chose Ad-Hoc Mode, this screen will appear and you will need to select the correct operating channel for your network from the *Channel* drop-down menu. Click the **Next** button, and go to **E**. Click the **Back** button to change any settings.

Channel - Choose a channel for your network. Make sure that you use the same channel on all of the devices in your wireless network. If you are unsure about which channel to use, select the default channel (Channel 6).

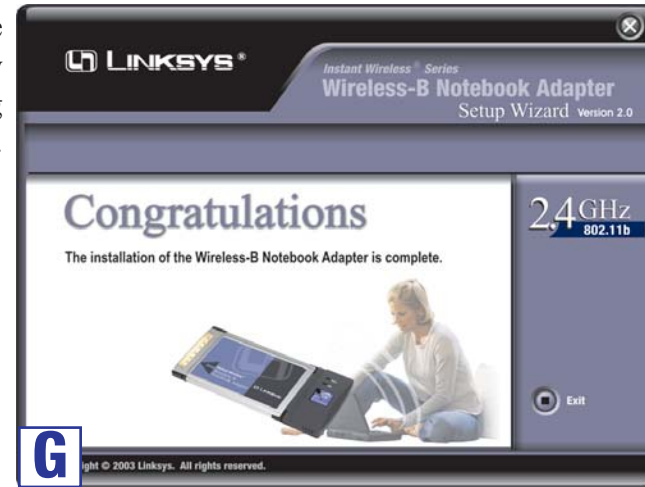


E. The next screen will ask you to review your settings before it starts to copy files. Click the **Next** button to save these settings, or click the **Back** button to change any settings.



F. For Windows 2000 users, a *Digital Signature Not Found* screen may appear about Windows 2000 compatibility. The Adapter has been tested and is compatible with Windows 2000. Click the **Yes** button to continue.

G. After the files have been successfully copied, the following screen will appear. Click the **Exit** button.



Windows 98SE, Me, and 2000 users: The driver installation and configuration for Wireless-B Notebook Adapter is complete.

Proceed to Step 2.

2 Connecting the Notebook Adapter

- Turn off your notebook PC.
- Locate an available PC Card slot on your notebook PC.
- Insert the Adapter with the label side facing up, so the Adapter fits snugly in the PC Card slot.



D. Turn on your notebook PC.

E. Windows will begin copying the driver files to your computer.

F. If Windows asks you for the original Windows CD-ROM, insert the CD-ROM, and direct Windows to its proper location (e.g., **D:**).

G. After installing the Adapter, the Wireless-B Notebook Adapter WLAN Monitor icon will appear in the system tray, which is located at the bottom righthand corner of your screen.

If you want to use the WLAN Monitor to check the link information, search for available wireless networks, or make additional configuration changes, then double-click the icon.

Windows 98SE, Me, and 2000 users: The installation of the Wireless-B Notebook Adapter is complete.

For additional information or troubleshooting help, refer to the User Guide on the Setup CD-ROM. You can also call or email for further support.

24-hour Technical Support 800-326-7114 (toll-free from US or Canada)

E-mail Support support@linksys.com

Website http://www.linksys.com or

http://support.linksys.com

RMA (Return Merchandise Authorization) http://www.linksys.com/support

FTP Site ftp://ftp.linksys.com

Sales Information 800-546-5797 (800-LINKSYS)