

Instant Wireless™ Series Wireless Network PC Card

Model No.: WPC11 (ver 2.5)

Quick Installation for Windows XP

This sheet will guide you through the basic steps needed to install the Wireless Network PC Card onto your network.

Installing The Wireless Network PC Card In Your Notebook PC

1. Locate an available Type II or Type III PCMCIA slot on your notebook computer.
2. With the PCMCIA adapter's 68-pin connector facing the PCMCIA slot and the "Wireless Network PC Card" label facing up, slide the PCMCIA adapter completely into the PCMCIA slot.

The Hardware Installation is complete.

Installing Your Wireless Network PC Card Drivers for Windows XP

Note: Do not click **Cancel** or **Skip** at any time during the installation. Doing so will prevent the driver from being properly installed on your PC. This document assumes that your CD-Rom drive is letter D and that you are running Windows XP in the Default mode.

1. Start your PC.
2. When the *Welcome to the Found New Hardware Wizard* screen appears, click the **Install from a list or specific location (Advanced)** radio button. Click **Next**.



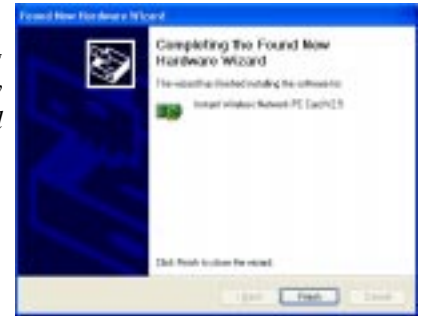
3. When the *Please Choose Your Search and Installation Options* screen appears, insert the Setup CD into your CD-ROM drive. (If a Linksys Utility screen appears, click the **Exit** tab.) Click the **Search for the best driver in these locations** radio button. Deselect the **Search removable media (floppy, CD-ROM...)** check box. (Note: If you do not deselect this option, Windows may find multiple drivers.) Select the **Include this location in the search:** check box. Enter **D:\winxp** in the field and click **Next**.



4. When the *Hardware Installation* screen appears, click **Continue Anyway**. If asked to upgrade firmware, click **OK**. If an error message appears, click **OK** again, as the firmware does not require upgrading.



5. From the *Completing the Found New Hardware Wizard* screen, click **Finish**.



6. Remove the Setup CD-ROM and restart your PC.

Installation is complete. For information on using your PC with your network, refer to the User Guide.

Connecting to Your Wireless Network

1. Right-click the **Network Icon** in your PC's System Tray.



2. Left-click **View Available Wireless Networks**. This will open the "Connect to Wireless Network" window. In the "Available Networks" section, highlight the desired wireless network by clicking its name (also called the SSID). Then, click **Connect**. No wireless device will be displayed if there is no active device on the network.

For more information about WEP, refer to the Router's User Guide or the KnowledgeBase on the Linksys Website.

For further information on Wireless Networking with Windows XP, search the Windows XP Search Engine using the keyword: "wireless".