

Instant Gigabit Series Instant Gigabit Network Adapter

Model No.: EG1032
EG1064

Quick Installation

for Windows 2000

This sheet will guide you through the basic steps needed to install the Instant Gigabit Network Adapter onto your network. If you have any problems during installation, refer to the **Troubleshooting** section of the **User Guide**.

Overview

After installing the Instant Gigabit hardware in your PC, follow these instructions to install the adapter driver. If you experience any difficulty, refer to your User Guide for more information.

Note: Do not click **Cancel** or **Skip** at any time during the installation. Doing so will prevent the driver from being properly installed on your PC.

Installing Your Instant Gigabit Network Adapter Drivers

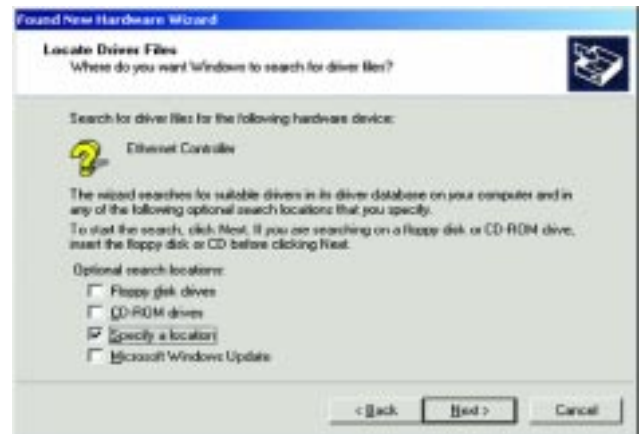
1. **Start your computer if you haven't already done so, and boot Windows 2000.** Log in if you are asked to. **Administrative rights are required to complete this installation.**
2. The *Found New Hardware* window will appear, indicating that Windows has found the Adapter.



3. **Windows will display the *Welcome to the Found New Hardware Wizard* box.** Click **Next**.
4. **The *Install Hardware Device Drivers* dialog box will appear.** When *Ethernet Controller* is displayed, select “*Search for a suitable driver for my device (Recommended)*”. Click **Next**.



5. **The *Locate Driver Files* dialog box will appear.** Select “*Specify a location*”. Click **Next**.



6. **When the *Found New Hardware Wizard* box appears,** insert the *Linksys Instant Gigabit Network Adapter Driver Disk* into your floppy drive. In the “*Copy manufacturer's files from*” field, type “*A:\Win2000*”. Click **OK**.
6. **The *Driver File Search Results* dialog box will appear.** Click **Next**.
7. **The *Completing the Found New Hardware Wizard* dialog box will appear.** The following adapter name will be shown: *Linksys EG1032/EG1064 Instant Gigabit Network Adapter*. Click **Finish**.



8. **Remove the driver disk from the floppy drive.**

The Windows 2000 driver installation is complete. If you want to share files or printers, refer to your Windows 2000 documentation or check with your system administrator.