

Instant Gigabit Series

Instant Gigabit Network Adapter

Model No.: EG1032
EG1064

Quick Installation

for Windows NT

This sheet will guide you through the basic steps needed to install the Instant Gigabit Network Adapter onto your network. If you have any problems during installation, refer to the **Troubleshooting** section of the **User Guide**.

Overview

After installing the Instant Gigabit hardware in your PC, follow these instructions to install the adapter driver. If you experience any difficulty, refer to your User Guide for more information.

Note: Do not click **Cancel** or **Skip** at any time during the installation. Doing so will prevent the driver from being properly installed on your PC.

Installing Your Instant Gigabit Network Adapter Drivers

The following steps will install the Instant Gigabit Network Adapter's driver software on your PC. ***This installation is for NT users that already have networking installed.*** Refer to your User Guide for more information about NT networking. Remember that **you must be logged on as a network administrator in order to complete this installation.**

1. **Start up your PC.**

2. Click on **Start, Settings, Control Panel**, then double-click on the **Network** icon.



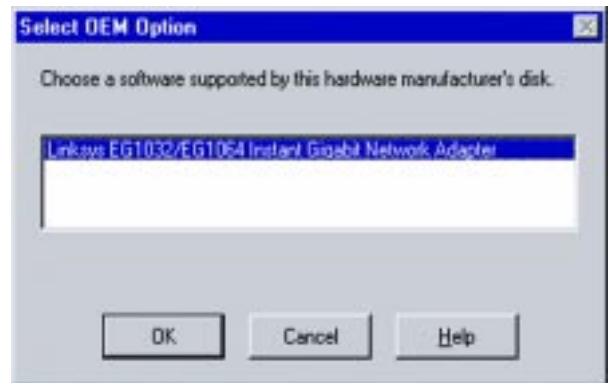
3. When the networking window appears (shown), choose the **Adapters** tab. Click the **Add** button.

4. When the list of available network adapters appears, click the **Have Disk** button.



5. Put the Instant Gigabit Network Adapter disk into drive A. Type **a:** into the box on your screen and click **OK**.

6. Highlight the **Linksys EG1032/EG1064 Instant Gigabit Network Adapter** entry in the window that appears. Click **OK**.



7. Windows NT then asks you for the media type. Choose the **AutoSense** option. When finished, click on **OK**. Click **Close**.

8. NT will probably ask you to supply your original Windows NT CD-ROM or setup disks. Direct Windows NT to the proper location (most likely **D:\i386**).

9. Click on the **Protocols** tab. Add any protocols you require by clicking the **Add** button. (Refer to your Microsoft documentation if you have any questions on adding protocols.)

10. After your bindings, settings, and services are set, click the **Close** button.

11. Remove your Driver Disk and CD-ROM and click **Yes** to restart your PC.

12. Once your PC has rebooted, double-click the **Network Neighborhood** icon on your desktop. Ensure that you have access to the network. If you do, your card has been properly installed.

• If you had previously installed a NT service pack, you must re-install that now. Otherwise, you may receive **Not Enough Service Storage Space** errors in the Event Viewer.

• If you need to install the TCP/IP protocol, refer to your system administrator or your Windows NT documentation. Linksys does not provide technical support for the configuration or troubleshooting of the TCP/IP protocol

The Windows NT Installation and Setup of the Instant Gigabit Network Adapter is complete