

EtherFast® 10/100 USB Network Adapter

Model No.: USB100TX

Quick Installation For Windows 2000

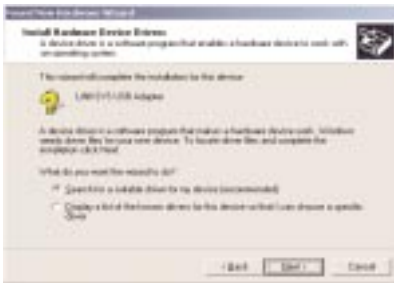
This sheet will guide you through the basic steps needed to install this Linksys product on your computer. If you have any problems during installation, visit our support page at www.Linksys.com.

1. Start your computer and boot up Windows 2000.
2. When you are on the Desktop, plug your network cable into the USB Adapter. Plug one end of your USB cable into the USB Adapter and the other end into your PC's USB port.
3. Windows will display the *Found New Hardware Wizard* box.



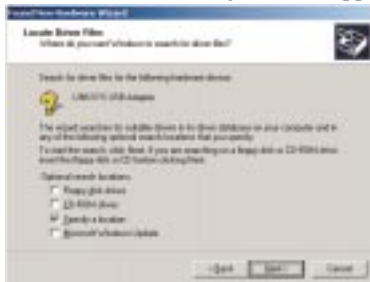
Click **Next**.

4. The *Install Hardware Device Drivers* dialog box will appear.



When *Linksys USB Adapter* is displayed, select “*Search for a suitable driver for your device (Recommended)*”. Click **Next**.

5. The *Locate Driver Files* dialog box will appear.



Select the “*Specify a location*” option and insert the Linksys 10/100 USB Network Adapter Program Disk into floppy-drive A. Then, click **Next**. When prompted to enter a path, type “*A:\win2000*” and click **OK**.

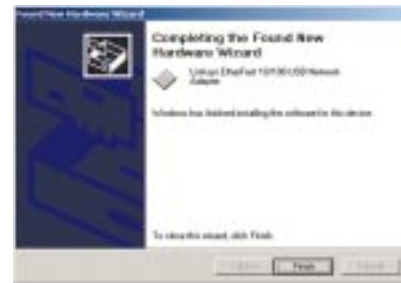
6. The *Driver File Search Results* dialog box will appear.



Click **Next**.

If the *Digital Signature not found* dialog box appears, click **Yes** to continue.

7. After a few seconds, the *Completing the Found New Hardware Wizard* dialog box will appear.



The following adapter name will be shown:

Linksys Etherfast 10/100 USB Network Adapter

Click **Finish**.

8. Remove the floppy disk from the drive.

Installation is complete.

If you want to share files or printers, refer to the Windows 2000 documentation.

Note: Do not click **Cancel** or **Skip** at any time during the installation process. Doing so will prevent your driver from being properly installed on your PC.