

EtherFast® 10/100 USB Network Adapter

Model No.: USB100TX

After installing the EtherFast 10/100 USB Network Adapter, follow the instructions below to install the adapter's software on your Windows XP computer.

Note: Perform the following procedure only if Windows XP fails to automatically detect the adapter and install the correct drivers.

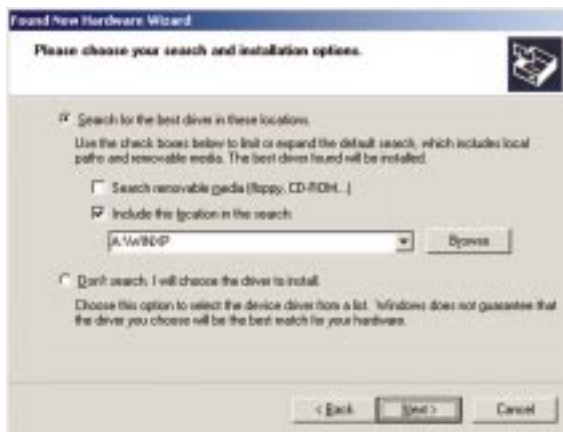
1. Start your computer. Windows XP will automatically detect the presence of the USB Network Adapter hardware in your computer and display the *Found New Hardware Wizard* window.



2. Insert the Driver Disk into your computer's floppy drive, and select **Install from a list or specific location (Advanced)**. Click **Next**.

4. Select **Search for the best driver in these locations**.

Select the **Include this location in the search:** option, and enter **A:\WINXP** in the location box. Click **Next**.



Quick Installation For Windows XP

This sheet will guide you through the basic steps needed to install the EtherFast 10/100 USB Network Adapter onto your network. If you have any problems during installation, refer to the **Troubleshooting** section of the **User Guide**.

5. Windows will locate the driver and begin copying the necessary files onto your computer.



6. When the following window appears, click **Finish**.



7. When you are asked if you want to restart your computer, remove the Driver Disk from the floppy disk drive, and click **Yes**. Then allow your system to restart.

**Installation of the EtherFast 10/100
USB Network Adapter is now complete.**