

HomeLink™ Series

Phoneline 10M USB Network Adapter



Model No.: *USB200HA*

User Guide

 **LINKSYS**®

COPYRIGHT & TRADEMARKS

Copyright © 2000 Linksys, All Rights Reserved. Phoneline 10M USB Network Adapter is a registered trademark of Linksys. Microsoft, Windows, and the Windows logo are registered trademarks of Microsoft Corporation. All other trademarks and brand names are the property of their respective proprietors.

LIMITED WARRANTY

Linksys guarantees that every Phoneline 10M USB Network Adapter is free from physical defects in material and workmanship under normal use for one (1) year from the date of purchase. If the product proves defective during this warranty period, call Linksys Customer Support in order to obtain a Return Authorization number. **BE SURE TO HAVE YOUR PROOF OF PURCHASE AND A BARCODE FROM THE PRODUCT'S PACKAGING ON HAND WHEN CALLING. RETURN REQUESTS CANNOT BE PROCESSED WITHOUT PROOF OF PURCHASE.** When returning a product, mark the Return Authorization number clearly on the outside of the package and include your original proof of purchase.

IN NO EVENT SHALL LINKSYS' LIABILITY EXCEED THE PRICE PAID FOR THE PRODUCT FROM DIRECT, INDIRECT, SPECIAL, INCIDENTAL, OR CONSEQUENTIAL DAMAGES RESULTING FROM THE USE OF THE PRODUCT, ITS ACCOMPANYING SOFTWARE, OR ITS DOCUMENTATION. LINKSYS DOES NOT OFFER REFUNDS FOR ANY PRODUCT. Linksys makes no warranty or representation, expressed, implied, or statutory, with respect to its products or the contents or use of this documentation and all accompanying software, and specifically disclaims its quality, performance, merchantability, or fitness for any particular purpose. Linksys reserves the right to revise or update its products, software, or documentation without obligation to notify any individual or entity. Please direct all inquiries to:

Linksys P.O. Box 18558, Irvine, CA 92623.

FCC STATEMENT

The Phoneline 10M USB Network Adapter has been tested and found to comply with the limits for a Class B digital device, pursuant to Part 15 of the FCC Rules. These limits are designed to provide reasonable protection against harmful interference in a residential installation. This equipment generates, uses, and can radiate radio frequency energy and, if not installed and used according to the instructions, may cause harmful interference to radio communications. However, there is no guarantee that interference will not occur in a particular installation. If this equipment does cause harmful interference to radio or television reception, which is found by turning the equipment off and on, the user is encouraged to try to correct the interference by one or more of the following measures:

- Reorient or relocate the receiving antenna
- Increase the separation between the equipment or device
- Connect the equipment to an outlet other than the receiver's
- Consult a dealer or an experienced radio/TV technician for assistance

Table of Contents

Introduction	1
Package Contents	2
Windows & Computer Compatibility	2
Getting to Know the Phonline 10M USB Network Adapter	3
The Adapter's Ports	3
The Adapter's LEDs	4
The USB Icon	4
USB Cabling	5
Modem and Fax Compatibility	5
Installing the Phonline 10M USB Network Adapter	6
Installing the USB Network Adapter & Cabling	6
Connecting to a Phonline Network	7
Connecting to an Ethernet or Fast Ethernet Network	8
Windows 98 Installation & Setup	9
Installing the USB Network Adapter's Driver	9
Network Component Configuration	13
Sharing Your Files & Printers	18
Windows 2000 Installation & Setup	20
Installing the USB Network Adapter's Driver	20
Troubleshooting	23
Appendix	26
Client For Microsoft Setup for Windows 98	26
Novell NetWare 3.x Client Setup for Windows 98	27
Starting Over in Windows 98	28
Starting Over in Windows 2000	32
Manually Installing Network Components in Windows 98	34
Open Source & Beta Operating Systems	35
Telephone Cabling	38
Specifications	39
Customer Support	40

Introduction

HomeLink Phonline 10M USB Network Adapter

Congratulations on your purchase of the Linksys HomeLink Phonline 10M USB Network Adapter. Now you'll be able to instantly connect multiple PCs over your telephone wiring and talk on the phone at the same time. There's no need for extra hubs or cables. The network runs on standard home-grade telephone lines, just like the ones you use every day.

The HomeLink Phonline 10M USB Network Adapter allows your phone line to carry network data at the same time it carries your regular telephone voice service. The USB device is equipped with two standard telephone ports and one USB port, which you can use to connect to any 1Mbps or 10Mbps HomeLink network without swapping devices or running multiple adapters. The Adapter connects to your Windows 98 or Windows 2000 PC's USB port. Plug the HomeLink Phonline 10M USB Network Adapter into any standard wall jack, and you're networked.

Features

- Network Your Computers Using Your Existing Telephone Line
- Easy Plug-and-Play Installation - Installs Without Opening Your PC Case
- Works with Windows 98 or Windows 2000 PCs With a USB Port
- 10Mbps Transfer Rate Over Telephone Lines
- External USB Network Adapter with two RJ-11 Modular Telephone Ports
- USB Cable and Phone Cable Included—Nothing More to Buy
- 4 Easy-to-Read LED Status Indicators
- HomePNA-Compatible Technology
- Connect Up to 30 PCs Together On Your HomeLink 10M Phonline Network
- Backward Compatible with 1Mbps HomePNA-Compatible Hardware
- No Hubs or Switches Required - Data Travels Over Your Phone Lines
- Share High-Speed Internet Access with Your Phonline Network Users
- Free 24-Hour Technical Support (North America Only)
- 1-Year Limited Warranty

Package Contents for the Phoneline 10M USB Network Adapter



- One HomeLink Phoneline 10Mbps USB Network Adapter
- One Standard USB Cable
- One Standard Telephone Cable
- One Driver Disk
- One User Guide and Registration Card

Windows & Computer Compatibility



To use this device, you must have Microsoft Windows 98 or Windows 2000 installed on your PC. If you do not have Windows 98 or Windows 2000, this device will not work.

Also, the device requires that a USB port is installed and enabled on your PC. Some PCs have a disabled USB port. If your port doesn't seem to be working, there may be jumpers on the motherboard or a menu option in the BIOS that will enable a PC's USB port. Consult your computer's user guide.

Some motherboards have USB interfaces, but no ports. You should be able to install your own USB port and attach it to your PC's motherboard using hardware purchased at any computer store. Consult your computer's user guide.

Getting to Know Your Phoneline 10M USB Network Adapter

The Adapter's Ports



USB This **USB** port, which is a Type B port, is where you connect your HomeLink Phoneline 10M USB Network Adapter externally to your PC. Use the USB cable provided in the package contents.

HomeLink The Adapter's **HomeLink** port connects your PC to the phone jack, using regular phone cables.

Phone The **Phone** port connects your PC's HomeLink Adapter to another HomeLink PC through the second PC's **HomeLink** port. See page 7 on how to daisy-chain your PCs.

Or, you can use the **Phone** port to connect a telephone at the end of your HomeLink network. The **Phone** port will only carry phone service if your HomeLink network plugs into a phone jack.

The Adapter's LEDs



- POWER** The **Power** LED will light up **green** when your USB Network Adapter is connected to a power source.
- TX** The **TX** LED will light up **green** if your HomeLink 10Mbps USB Adapter is successfully sending data over a phoneline network.
- Link** The **Link** LED will light up **green** if your PC's adapter is actively connected to a phoneline network.
- RX** The **RX** LED will light up **green** if your HomeLink 10M USB Network Adapter is successfully receiving, or downloading, network data.

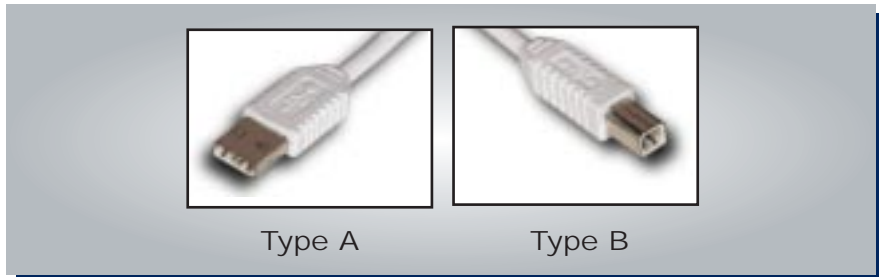
The USB Icon

The USB icon shown below marks a USB port on a PC or device.



USB Cabling

The HomeLink Phoneline 10M USB Network Adapter comes with one USB cable. One end of the USB cable has a rectangular connector called a **Type A** connector. The other end of the cable has a square **Type B** connector.



The USB cable's **Type B** tip connects to the USB device, that is, your USB Network Adapter. The **Type A** end connects to a computer's USB port.

The picture below shows two USB ports as they might appear on your computer. Note the two USB icons marking the ports.



Modem and Fax Compatibility

If you want to have a phoneline network and a phone in one room with just one phone jack, you can still attach your phone to the jack by using a telephone jack splitter.

Plug your telephone or fax machine into one of the splitter's ports, and your HomeLink phoneline 10M USB Network Adapter into the other.

Installing the HomeLink Phoneline 10M USB Network Adapter

Overview

The following instructions show you how to attach your Phoneline 10M USB Network Adapter to your PC. After you install the adapter, you must install the adapter's driver software on your PC and configure your PC to access your HomeLink phoneline network.

Driver installation and PC configuration instructions follow these hardware installation instructions.

Installing the USB Network Adapter & Cabling

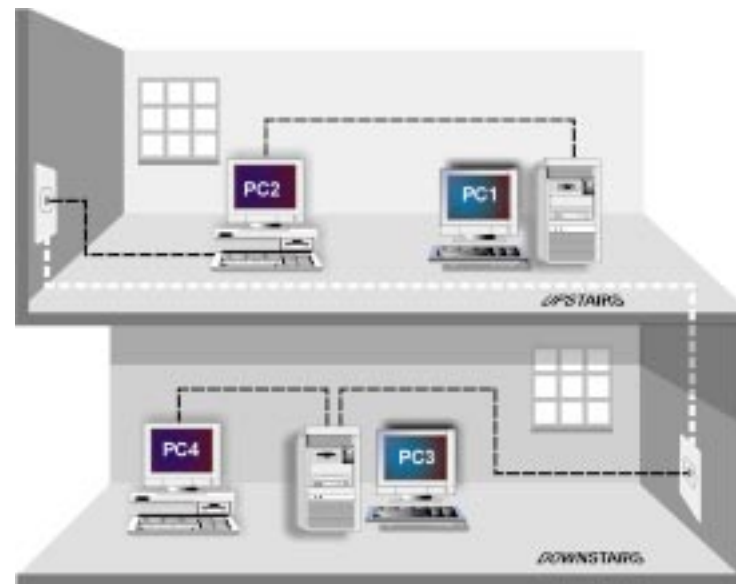
1. **Insert the cable's Type B connector** into the USB Adapter's Type B port.
2. **Insert the other end of the USB cable** with the Type A connector into the USB port on your PC or your USB hub.

Your USB Network Adapter is now connected to your PC. Continue on to the next page to connect your PCs as a HomeLink phoneline network.

Note: Details on USB cabling and ports information can be found on page 5.

Connecting to a Phoneline Network

Computers on a HomeLink network can be connected in one of two ways. They can be daisy chained through their HomeLink port to another HomeLink PC in a string, or they can be connected directly to a phone jack. The diagram below shows a HomeLink phoneline network that uses both types of connections.



To connect your HomeLink PCs together in your HomeLink network:

1. **Connect one end of your telephone cabling** to your Phoneline 10M USB Network Adapter's **HomeLink** port.
2. **Connect the other end of that telephone cable** into another computer's **HomeLink** port or directly into a phone jack.

Your computer is now connected to your Phoneline network.

- If your computer runs **Windows 98**, go to page 8 now for instructions on installing your Windows 98 driver.
- If your computer runs **Windows 2000**, go to page 19 now for instructions on installing your Windows 2000 driver.

Windows 98 Driver Installation

Overview

After installing your Phoneline 10M USB Network Adapter in your computer, follow these instructions to install the network driver. The installation procedure for the network driver will vary slightly depending on which version of Windows 98 you are using and your current system configuration. If you encounter problems during the installation, consult the Troubleshooting section on page 22 in the Appendix.

Installing the USB Network Adapter's Driver

After installing the HomeLink Phoneline 10M USB Network Adapter, follow the instructions below to install the adapter's software into your Windows 98 computer.

1. Start up your PC if you haven't already done so.
2. Windows 98 will automatically detect the presence of the Linksys Phoneline USB Adapter hardware in your PC.
3. Slide the Linksys Driver Disk into your floppy drive when the *Add New Hardware Wizard* window is displayed. Click **Next**.



4. Select "Search for the best driver for your device (Recommended)." Click **Next**.



5. Select "Floppy disk drives." Click **Next**.



6. Windows will display a window announcing that it is ready to install the *Linksys Phoneline 10M USB Network Adapter*. Click **Next**.



7. Windows will start copying the files to your hard drive.
See the chart below to guide you through the process.

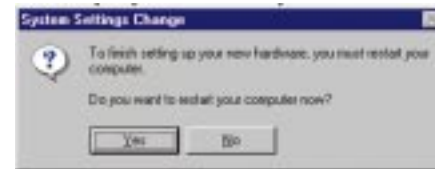
Under no circumstance are you to click Cancel or Skip File!	
<ul style="list-style-type: none"> • If your PC asks for the Linksys Setup or Driver Disk... 	<ol style="list-style-type: none"> 1. Click OK. 2. Make sure that the Linksys Driver Disk is in your PC's floppy drive. 3. Type "a:\\" in the "Copy files from:" field. 4. Click OK.
<ul style="list-style-type: none"> • If you are asked to supply your Windows 98 Installation Files or Disks... 	<ol style="list-style-type: none"> 1. Click OK. 2. If you have a Windows 98 CD-ROM, type "d:\win98" in the "Copy files from:" box, where "d:" is your CD-ROM drive. 3. If you don't have a Windows 98 CD-ROM, type: "c:\windows\options\cabs." 4. Click OK.
<ul style="list-style-type: none"> • If you are asked for a file that includes "USB200HA" or "BCM" in its name... 	<ol style="list-style-type: none"> 1. Insert the Linksys Driver Disk into your PC's floppy drive. 2. Type "a:\\" in the "Copy files from:" prompt. 3. Click OK
<ul style="list-style-type: none"> • If you receive a Version Conflict error... 	<ol style="list-style-type: none"> 1. Choose to keep the newest version of the file by clicking Yes.

8. A window will appear to tell you that Windows has finished installing the new hardware device. Click **Finish**.



Note: If Windows 98 asks you for a **Computer Name** or **Workgroup name**, skip ahead to the instructions on page 14. Once you have chosen your **Computer** and **Workgroup names**, go back to where you left off and continue the installation.

9. A **Systems Settings Change** window will ask you if you want to restart your computer. Remove your driver disk from its drive and click **Yes**. If Windows does not ask you to restart your PC, click the **Start** button. Choose **Shut Down**, choose **Restart**, then click **Yes**.



The Windows 98 driver installation is now complete.

Go now to page 12 for instructions on configuring Windows 98's network protocols. Consult your Microsoft documentation for information on your network configuration, if needed.

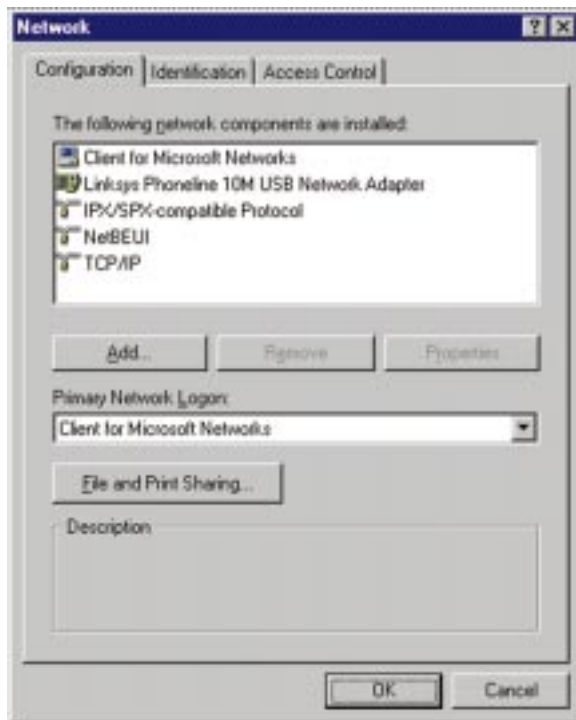


Note: From this point on, you must provide a User Name and Password every time Windows requests them. Remember to click **OK** to properly log on to Windows. If you click **Cancel** or **Esc**, your attempt to log on to Windows will fail.

Network Component Configuration

1. Once you are back at the Windows 98 Desktop, click on your Taskbar's **Start** button, then **Settings**, then **Control Panel**, then double-click the **Network** icon.
2. When the *Network* window appears, click on the **Configuration** tab. A window like the one below will appear. There may be extra components listed in addition to the ones listed below, which is normal.

- *Client for Microsoft Networks*
- *Linksys Phoneline 10M USB Network Adapter*
- *IPX/SPX-compatible protocol*
- *NetBEUI*
- *TCP/IP*



If any of the components shown above are missing, you must manually install them. See the section *Manually Installing Network Components in Windows 98* on page 33 for instructions.

3. Click the **File and Print Sharing** button to bring up the *File and Print Sharing* window.



4. If you want to give others access to files on your PC's hard drive, select *I want to be able to give others access to my files.*
5. If you'd like to share your printer with other users on the network, select *I want to be able to allow others to print to my printer.*

Note: If you do not enable File and Print Sharing, your PC will be invisible on the network and inaccessible to other network users.

6. Click **OK**. *File and Printer Sharing for Microsoft Networks* now appears in the list of installed components.
7. After making sure that all the listed network components are installed on your system, select **Client for Microsoft Networks** in the *Primary Network Logon* field.

8. Click on the **Identification** tab. Type your **Computer Name** in the *Computer Name* field. Make sure you choose a name that is unique from the other computer names on the network, e.g., Dad, Upstairs_PC, etc.

Note: Your Computer Name and Workgroup Name must both be less than 15 characters, and must only consist of numbers and letters. Every Computer Name for each PC on the network must be different from all the other PCs' Computer Names on the network.

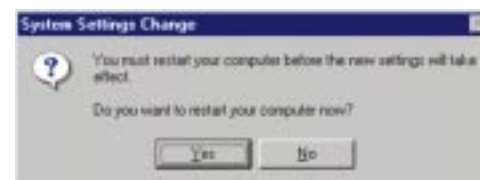


9. Type your **Workgroup Name** in the *Workgroup* field. The Workgroup name must be the same Workgroup Name used by all the other PCs on the network. **Do not click OK** when you are done.

10. Optional: Enter a **description of your computer** in the *Computer Description* field. You may leave this field blank if you wish.
11. *Optional:* Choose the **Access Control** tab. Make sure that **Shared-level access control** is selected. If the setting is on **User-level access control** and you can't change it, see Troubleshooting problem 4 on page 22.



12. Click **OK**. Your PC may ask for your Windows 98 CD-ROM or the location of the Windows 98 installation files. If it does, direct Windows to the appropriate location, e.g., **D:\win98** if you have the Windows 98 CD-ROM, or **C:\windows\options\cabs** if you don't.
13. Once Windows has copied those files, the *System Settings Change* window appears. Remove your driver disk from the floppy drive and click **Yes** to restart your PC. If you don't see this window, click on your **Start** button, then choose *Shut Down*, select *Restart*, and click **OK** to restart your PC.



14. A *Logon* window will appear, requiring you to enter a **User Name** and **Password**. Choose a user name and password if you haven't already and click **OK**. Do not click the **Cancel** button or **Escape [ESC]** key. Clicking either of these buttons will prevent you from logging onto the network. If the *Logon* window does not appear or if it does not allow you to log on, see problem 3 in the Troubleshooting section on page 22.
15. Once you are at the Windows 98 Desktop, double-click on the **Network Neighborhood** icon. You should see one icon for the entire network and the names of the other PCs on the network.
 - **If you can see your computer along with all the other computers on the network in Network Neighborhood, then your Windows 98 network configuration is complete.**

Continue with *Sharing Your Files and Printers in Windows 98 on the next page if you want data from your PC to be available to others on the network. However, you may stop here if you want to configure File and Print Sharing later.*

 - If you don't see anything in Network Neighborhood, press the **F5** key on your keyboard a few times to refresh the screen. If that doesn't work, go to Troubleshooting problem 9 on page 24.
 - If you only see your own PC in Network Neighborhood, see Troubleshooting problem 5 on page 22.
 - If you see all the computers on the network except yours, press the **F5** key a few times. If, after a minute or so, you still can't see your own PC, see Troubleshooting problem 8 on page 24.
 - If you only see PCs that are running the same operating system as you, and you don't see any other PCs, go to problem 7 on page 23.

Sharing Your Files and Printers in Windows 98

Overview

By “sharing” your files and printers, other PCs on your HomeLink network will be able to access those resources on your PC.

Before sharing your files and printers, you must set up your PC to be used with any file servers on the network. If you are **not** using Windows 98 with an NT or NetWare file server, or if you are not sure if you have a file server, continue below.

If you are using a NT or NetWare file server, go to page 25 for Client Setup.

Enabling File Sharing

1. Double-click on your **My Computer** icon to bring up a window of available disk drives.
2. Right-click on the drive or folder that you want to share with other users.
3. Click on **Sharing**, then the **Sharing** tab. Click on **Share As**.
4. In the *Share Name* field, enter a name for the drive or folder you are sharing. This can be any drive on your PC— a floppy drive, hard drive, CD drive, zip drive, etc.
5. Choose the type of access that you want to give other users.
 - **Read-Only access** allows other users to view the files on the selected drive or folder.
 - **Full access** allows other users to create, change, or delete files on the selected drive or folder.
 - **Depends on Password** allows other users to have Read-Only and/or Full Access to the selected drive or folder, depending on the password that you decide to give them.

*Note: If you are using your PC to access the Internet, it is **highly recommended** that you create passwords for your shared access.*

6. If you want to assign access passwords, type the passwords into the *Password* fields.

7. When you're done, click on the **Apply** button, followed by **OK**. Repeat steps 1-7 for any drive or folder you want to share on the network.

You have successfully enabled File Sharing on your PC. Your selected drives or folders can now be accessed by other network users. If a user tries to access one of your password-protected drives or folders, he or she will be asked for the appropriate Read-Only or Full-Access password. Below are the instructions to share your PC's printer over the network.

Enabling Printer Sharing

1. Double-click on the **My Computer** icon.
2. Double-click the **Printers** folder. A window of available printers will appear.
3. Right-click on the printer that you want to share with other users. Click on **Sharing**, then the **Sharing** tab.
4. Click on **Share As**. In the *Share Name* field, name the printer you want to share. If you want to assign a password to the printer so that only certain users can access it, type a password in the *Password* field.
5. Click on the **Apply** button, then **OK**. Your printer(s) are now shared.

Note: Some printers cannot be shared on the network. Others may require special instructions. Refer to your printer's user guide or contact your printer manufacturer if you think this may be the case with your printer.

The Printer Sharing setup and installation is complete. Your printer can now be accessed by other network users. The printer's driver may have to be installed on other PCs. Consult your printer's documentation.

Windows 2000 Driver Installation

Overview

After installing the Phoneline 10M USB Network Adapter on your PC, follow these instructions to install the HomeLink Windows 2000 driver. The installation procedure for the network driver could vary slightly depending on which version of Windows 2000 you are using, and on your current system configuration. If you encounter problems during the installation, see the Troubleshooting section on page 22.

Installing the Network Adapter's Driver

1. Start your PC in Windows 2000, if you haven't already.
2. Windows will display the *Welcome to the Found New Hardware Wizard* window. Click **Next**.



3. The *Install Hardware Device Drivers* window will appear. When *Linksys USB Adapter* is displayed, select “*Search for a suitable driver for my device (Recommended)*.” Click **Next**.



4. The *Locate Driver Files* window will appear. Select the “*Floppy disk drives*” option and insert the driver disk into your floppy drive. Click **Next**.



5. The *Driver File Search Results* window will appear. Click **Next**.



6. The *Completing the Found New Hardware Wizard* window will appear with the name of your adapter, *Linksys Phoneline 10M USB Network Adapter*. Click **Finish**.



7. Remove the driver disk from your floppy drive.

The Windows 2000 HomeLink driver installation is now complete. If you want to share files or printers, see your Microsoft documentation or ask your network administrator.

Troubleshooting

1. Windows doesn't detect new hardware when the HomeLink Adapter hardware is installed, or it continues to detect the adapter each time I restart the PC.
 - You may not have installed the adapter correctly or securely into the appropriate port of your PC. Check that the adapter is securely inserted into the appropriate port.
 - The system BIOS may not be USB-compatible, your PC's USB settings may be disabled, or the motherboard may have USB options not supported by Windows 98 or Windows 2000. If you are not sure, contact your PC's manufacturer.
2. Windows can't locate the driver for the HomeLink Adapter device.
 - You may have inserted the wrong disk into your PC's disk drive.
 - The disk may be defective, files may be missing, or you may be pointing Windows to the wrong directory or drive.
 - You can download the correct driver from our website www.linksys.com.
3. The Windows Logon screen does not appear after I restart my PC.
 - Click on **Start**, then **Log Off**. Log back in. If this doesn't solve the problem, your PC's manufacturer may have disabled Windows' networking. Contact your computer's manufacturer for help. If using Windows 2000, refer to your Microsoft documentation.
4. On the **Access Control** Tab, User Level Access is selected, but Shared Level Access is grayed out and not accessible.
 - You previously had your primary network logon set to *Client for NetWare Networks*. On the **Configuration** tab of the *Network Properties* window, make sure that your primary network logon is set to *Client for Microsoft Networks*.
 - Your personal web server PC or Microsoft Front Page may require you to choose a user level for security reasons.
5. In Network Neighborhood, I can only see my own PC and no other PCs on the network.
 - Make sure that the cables are connected correctly. Make sure your **Link** and **TX** LEDs on your HomeLink Adapter are lit up. Swap your cable for a new cable that you know is working.
 - Verify that the HomeLink Adapter's Phoneline configuration is set to *Auto Configuration*.
6. I've decided that I don't want to share a drive or printer anymore, or I want to physically remove a drive or printer from my network.
 - You must reconfigure your File and Printer Sharing settings manually. To do so, double-click on your **My Computer** icon. Click on the **Printers** folder. A window of available printers will appear. Right-click on the printer that you want to disable on the network. Click on **Sharing**, followed by the **Sharing** tab. Click on **Not Shared**. When you're done, click on the **Apply** button, followed by **OK**.
 - You can disable shared drives in the same way. In Windows Explorer, right-click on the drive you want to stop sharing. Click on **Sharing**, followed by the **Sharing** tab. Click on **Not Shared**. When you're done, click on the **Apply** button, followed by **OK**.
7. In Network Neighborhood, you can only see computers running the same operating system as your PC. For example, if you are running Windows 98, you can only see other Windows 98 PCs and no PCs running Windows 95.
 - Click **Start**, **Find**, then **Computer** and type the name of any other computer in the window that comes up. Click **Find Now**.
 - Make sure that you are using the same protocols and workgroup names on the computers. To do this, click on **Start**, **Settings**, **Control Panel**, then double-click on the **Network** icon. Click on the **Configuration** tab and verify your protocol settings. If any protocols are missing, add any needed protocol(s) using the **Add** button in the Network window. Next, click on the **Identification** tab for Workgroup settings. Make sure they are consistent with your other PCs.
 - If all computers are using the same protocol(s) and Workgroup name, and Windows 95 computers can't see Windows 98 computers, enable NetBIOS on all the computers using Windows 95 and 98.
 - IPX/SPX-compatible protocol should be installed on all computers.
 - Bring up the properties of the IPX/SPX-compatible protocol. To do so,
- Try connecting your PCs using **only** the phone cable provided with the HomeLink adapter. Disconnect your PCs from any phone jacks and remove any telephone, modem, or other device that you have connected to the HomeLink adapters.
- If the PCs are far away from each other, bring them close to each other and try connecting them directly together. This test will determine whether your phone line or your HomeLink hardware is causing your network to malfunction.
- Make sure the other PC is turned on!
- Choose **Start**, **Find**, and **Computer**. Type the name of the computer in the window that comes up, and click **Find Now**.

click on **Start, Settings, Control Panel**, then open **Network** and click on the **Configuration** tab. Highlight *IPX/SPX-compatible Protocol* (only one of them) and click on **Properties**.

- Click on the **NetBIOS** tab. Put a check next to *I want to enable NetBIOS over IPX/SPX* and click **OK**. Click **OK** again.
- After Windows finishes copying the appropriate files, restart your computer. When you've returned to the Desktop, open **Network Neighborhood** or my network places and look for the other PCs on your network.

8. In Network Neighborhood, I can only see some of the computers.

- Choose **Start, Find**, and **Computer**. Type the name of the computer in the window that comes up, and click **Find Now**.
- Now make sure that you are using the same protocol(s) and workgroup name on computers. To do this, click **Start, Settings, Control Panel** on two computers running different Windows operating systems. Click on the **Network** icon, choose the **Configuration** tab, then click on the **Identification** tab for Workgroup name. Compare the protocols on both computers and make sure that they are the same. If any protocols are missing, see page 33 to install any protocol(s) you need.
- Make sure that File & Print sharing is enabled on every computer.

9. Network Neighborhood is empty.

- Verify that your Microsoft Client is installed. See the Windows 98 setup instructions for directions.
- Verify that you have logged in correctly. Refresh the screen by pressing **F5** several times.

Appendix

Client for Microsoft Setup for Windows 98

If you are installing the Phoneline 10M USB Network Adapter in a Windows 98 PC that you plan on logging onto a NT domain server, follow the directions below.

1. Start up Windows. Click on **Start, Settings**, then **Control Panel**. Double-click on **Network** to bring up the Network window. Click on the **Configuration** tab.
2. In the *Primary Logon* field, you have two choices. Choose one **Client for Microsoft Networks**, which instructs your PC to log onto an NT 4.0 or Windows 2000 server where you already have a username and password set up.
3. Under the *The following network components are installed* field, highlight *Client for Microsoft Networks* and click on the **Properties** button.
4. The *Client for Networks Properties* window will appear. Under the *Logon Validation* window, make sure that *Log on to Windows NT domain* is checked. Enter the name of your domain into the *Windows NT Domain* field.
5. *Optional*: Click on the **Access Control** tab. Make sure that *Share-level access control* is selected; do not choose *User-level access control*. If Access Control is greyed out and cannot be selected, refer to Problem 5 in the Troubleshooting section on page 22.
6. When you're done, click **OK**. When asked if you want to restart your PC, choose to do so.

The Microsoft Client portion of the Windows setup is now complete.

Novell NetWare 3.x Client Setup for Windows 98

The instructions below explain how to set up the regular Novell NetWare 3.x client for use on a Windows 98 PC.

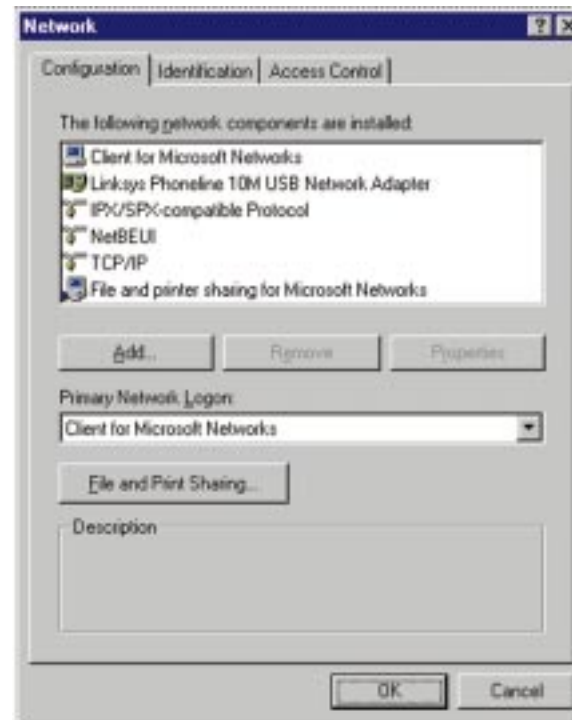
1. Follow the Windows 98 setup instructions.
2. Start up Windows 98. Click on **Start, Settings**, then **Control Panel**. Double-click on **Network**. The Network window appears. Click on the **Configuration** tab.
3. In the **Primary Logon** field, choose *Client for NetWare Networks*. If you don't see this option, see page 25 to install this component.
4. Under the *The following network components are installed* window, highlight *Client for NetWare Networks* and click on the **Properties** button.
5. The *Client for NetWare Networks Properties* window appears. Under the **General** tab, enter the name of your network's Preferred Server. Assign the *First Network Drive Letter*; the default is F. Make sure the **Enable** logon script processing is checked.
6. Click **OK**. Click on the **Access Control** tab. Make sure the *Share-level access control* option is selected; do not select *User-level access control*.
7. When you're done, click **OK** to restart your PC.

The NetWare Client portion of your Windows setup is now complete.

Starting Over in Windows 98

If you experience installation difficulties, you may need to reinstall all of the Windows networking components from scratch. The instructions below explain how to give your PC a clean sweep so you can retry the HomeLink Phoneline 10M USB Network Adapter's driver installation.

1. On your Desktop, click on the **Start** Button, highlight **Settings**, and click on **Control Panel**.
2. Double-click on the **Network** icon.
3. If the *Configuration* field has a component called Dial-Up Adapter, skip forward to step 5. If it doesn't, continue with step 4.



- If **Network adapters** is listed, then expand it by clicking on the **plus** [+] sign and remove all devices with the name Linksys in its description. If at any point you are asked to restart the computer, click **No**.



- If **Other Devices** is listed, click the **plus** [+] sign next to it. Remove *Linksys Phoneline 10M USB Network Adapter*.
- Click the **OK** button, shut down Windows, and restart your computer.
- After your computer has restarted, turn to page 8 for Windows 98 and follow the setup instructions.

Starting Over in Windows 2000

- Click the **Start** button, choose **Settings**, choose **Control Panel**, then double-click the **System** icon. The *System Properties* window will open.
- Choose the **Hardware** tab.



- Click the **Device Manager** button. The *Device Manager* window will open.
- Click the **plus sign** (+) beside *Network Adapters*. The *Linksys Phoneline 10M USB Network Adapter* listing should appear.

- Right-click on **Linksys Phoneline 10M USB Network Adapter** to bring up a context menu like the one shown below.

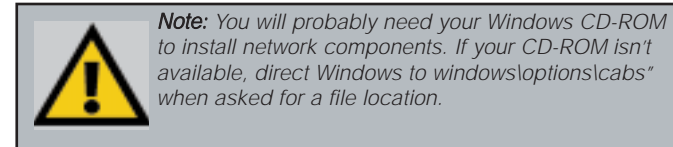


- Choose **Disable** from the context menu first.
- When asked if you want to disable the device, click **Yes**.
- Right-click on **Linksys Phoneline 10M USB Network Adapter** again. This time, select **Uninstall**.
- The *Network Adapters* category should no longer be listed.
- Click the **OK** button, restart your computer, and go to page 19 to install the Windows 2000 driver.

Manually Installing Network Components in Windows 98

Sometimes, you may have to manually install missing Windows networking components. For manually installing network components in Windows 2000, see your network administrator or your Microsoft documentation.

- Click on **Start, Settings, then Control Panel**.
- Double-click the **Network** icon. The *Network* window appears.



- Click the **Configuration** tab. Check to see that the following network components are installed.

- *Client for Microsoft Networks*
- *Linksys HomeLink 10M USB Network Adapter*
- *IPX/SPX-compatible protocol*
- *NetBEUI*
- *TCP/IP*

There may be other components listed in addition to the ones shown above. If any of the above components are missing, add them as follows.

Client for Microsoft Networks

If you plan on connecting to an NT file server or peer-to-peer network, click on the **Add** button. Highlight *Client* and click on **Add**. Choose **Microsoft** as the manufacturer in the *Network Client* field. Highlight *Client for Microsoft Networks* and click **OK**. Click **OK** again. The PC will begin copying the files it needs. When the installation is complete, you will be asked if you want to reboot. Click **Yes**.

Client for NetWare Networks

If you plan to connect to a Novell NetWare server (3.x), click on the **Add** button. Highlight *Client* and click **Add**. In the *Network Client* window, select *Manufacturer* and choose **Microsoft**. Highlight *Client for Microsoft Networks*. Click **OK** again. The computer will begin copying files to your system. When the installation is complete, you will be asked if you want to reboot. Click **Yes**.

IPX/SPX-compatible protocol

Click the **Add** button. Choose *Protocol* and click the **Add** button. Select *Manufacturer* and choose **Microsoft**. Under the *Network Protocol* box, highlight *IPX/SPX-compatible protocol*. Click **OK**. Click **OK** again. The computer will begin copying files to your system. When the installation is complete, you will be asked if you want to reboot. Click **Yes**.

NetBEUI

Click the **Add** button. Select *Protocol*, then click **Add**. Under *Manufacturer*, highlight **Microsoft**. Under *Network Protocol*, highlight **NetBEUI**. Click **OK**, then **OK** again. The computer will begin copying files to your system. When the installation is complete, you will be asked if you want to reboot. Click **Yes**.

TCP/IP

Click the **Add** button. Select *Protocol*, then click **Add**. Under *Manufacturer*, highlight **Microsoft**. Under *Network Protocol*, highlight **TCP/IP**. Click **OK**, then click **OK** again. The computer will begin copying files to your system. When the installation is complete, you will be asked if you want to reboot. Click **Yes**.

Open Source and Beta Operating Systems

Linksys does not provide technical support for **FreeBSD** or other freeware and open source operating systems. Although many Linksys products have been proven to perform well under freeware and open source OSes, technical support for setup and troubleshooting is not provided. For information on where to find device drivers and setup instructions for freeware OSes, visit the support pages and FAQ files on the Linksys website at www.linksys.com.

Linksys does not provide technical support for beta operating systems.

Telephone Cabling

The telephone cables you use can be either crossover or straight-through cables. Standard telephone cables like the ones you use every day in your home should do the job.

Phone cables have connectors at each end with RJ-11 tips, with four wires inside.



Specifications

Model Number	USB200HA
Standards	HomePNA Version 2.0-Compatible, USB Version 1.0 or higher
Protocol	CSMA/CD
Ports	1 USB Type-B Port 2 Standard Modular RJ-11 Telephone Ports With Pass-Through Feature
Speed	10Mbps or 1Mbps
Cabling	Standard Copper Telephone Cable with RJ-11 tips
Topology	Daisy Chain
Bus Speed	12Mbps (Buffered) Universal Serial Bus
LEDs	Power, TX, Link, RX

Environmental Specifications

Dimensions	3.8" x 2.6" x 1.2" (97 mm x 66 mm x 30 mm)
Unit Weight	5.0 oz. (156 g)
Power	5V, Bus Powered from PC
Certifications	FCC Class B, CE Mark Commercial
Operating Temperature	32°F to 122°F (0°C to 49°C)
Storage Temperature	-4°F to 158°F (-20°C to 70°C)
Operating Humidity	10% to 85%, Non-Condensing
Storage Humidity	5% to 90%, Non-Condensing

Customer Support

For help with the installation or operation of your HomeLink Phoneline 10M USB Network Adapter, contact Linksys Technical Support at one of the phone numbers or Internet addresses below.

Customer Support	800-326-7114 949-261-1288
Fax	949-261-8868
E-mail	support@linksys.com
Web Site	http://www.linksys.com
FTP Site	ftp.linksys.com





<http://www.linksys.com>

© Copyright 2000 Linksys, All Rights Reserved.