



Quick Installation

For Windows XP ONLY

This Quick Installation is meant to help you install the product quickly and easily. For detailed instructions on installation, configuration, and further setup options, please consult the User Guide.

Instant Wireless® Series

Wireless USB Network Adapter



WUSB11 ver. 2.6

System Requirements

- One PC with the following:
 - 200MHz or Faster Processor
 - 64MB RAM Recommended
 - Windows 98SE, Me, 2000, or XP
 - Available USB Port
 - CD-ROM Drive

Package Contents

- One Wireless USB Network Adapter (1)
- One USB Cable (2)
- One Wall Mount (3)
- One Setup CD-ROM with User Guide (4)
- One Quick Installation
- One Registration Card



1 Connecting the Wireless USB Network Adapter to Your PC

Note to Windows XP users: You must install the Adapter's hardware before installing the software. Do NOT run the Setup Wizard.

Note to Windows 98SE, Me, and 2000 users: You must run the Setup Wizard to install the software before installing the hardware. Refer to the Quick Installation for Windows 98SE, Me, and 2000.

A. The Adapter comes with the USB cable you will use to connect the Adapter to your PC. (See Figure A.1.)



A.1

Connect one end of the USB cable to the USB port of the Adapter (see Figure A.2).

Connect the other end of the USB cable to one of the USB ports on your computer (see Figure A.3).



A.2



A.3

B. The Power LED should light up when the Adapter is plugged in. (Make sure your PC is powered on.)



B

C. Raise the antenna. Make sure the antenna is positioned straight up into the air, at a 90° angle from the Adapter. This ensures optimum wireless operating range and performance.



C

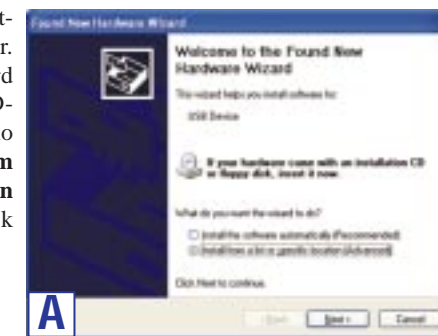
Proceed to Step 2.

2 Installing the Wireless USB Network Adapter Driver

After connecting the Adapter to your computer, you will install the driver.

Important: Do NOT run the Setup Wizard. If the Setup Wizard runs automatically after the Setup Wizard CD-ROM has been inserted, click **Exit**.

A. Windows XP will automatically detect the Adapter. Insert the Setup Wizard CD-ROM into your CD-ROM drive. Click the radio button next to **Install from a list or specific location (Advanced)**. Then click **Next**.



A

B. Click the radio button next to **Search for the best driver in these locations**. Select **Include this location in the search**, and enter **D:\Drivers** in the **location** field (if "D" is the letter of your CD-ROM drive). Click **Next**.



B

Continued on back

C. When Windows has finished installing the driver, click **Finish**.

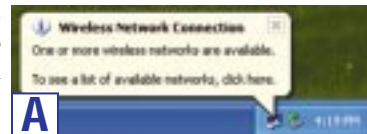


Proceed to Step 3.

3 Configuring the Wireless USB Network Adapter

Note: Windows XP has a built-in configuration tool. Use the Windows XP Wireless Zero Configuration (located in the system tray at the bottom of your screen) to configure the Adapter.

A. After installing the Adapter, the Windows XP Wireless Zero Configuration icon will appear in your computer's system tray. Double-click the icon.



Note: Steps B and C are the instructions and screenshots for Windows XP with Service Pack 1 installed. If you have not installed Service Pack 1, select the network you want, and click the **Connect** button. If the network has WEP encryption enabled, enter the WEP key in the *Network key* field, and then click the **Connect** button.

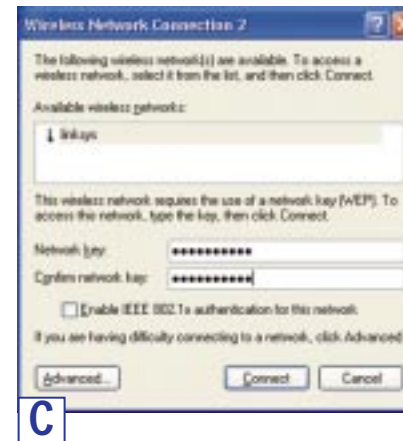
B. The screen that appears will show any available wireless network. Select the network you want.

If this network has WEP encryption enabled, go to Step C.

If this network does not have WEP encryption enabled, then the screen in Figure B will appear. Make sure the box next to *Allow me to connect to the selected wireless network, even though it is not secure* is checked. Then click **Connect**, and go to Step D.

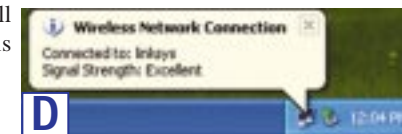


C. If WEP is enabled, the screen in Figure C will appear. Enter the WEP key of your wireless network in the *Network key* field, and re-enter it in the *Confirm network key* field. Then click **Connect**.



Important: Windows XP Wireless Zero Configuration does not support the use of a passphrase. Enter the exact WEP key used by your access point.

D. The screen in Figure D will appear if your connection is active.



For more information about wireless networking on a Windows XP computer, enter the keyword **wireless** in the Windows XP search engine.

Congratulations! The installation of the Wireless USB Network Adapter is complete.

For more details, advanced configuration, or troubleshooting help, refer to the User Guide on the Setup CD-ROM.

For additional troubleshooting help, obtain assistance from one of the following resources:

Technical Support	800-326-7114 (toll-free from US or Canada)
E-mail Support	support@linksys.com
Website	http://www.linksys.com or http://support.linksys.com
FTP Site	ftp://ftp.linksys.com
Sales Information	800-546-5797 (800-LINKSYS)