

Package Contents

- PowerLine AV Ethernet Adapter
- Start Here Folder
- Setup Wizard CD-ROM
- User Guide on CD-ROM
- Quick Installation
- Ethernet Cable

PowerLine AV Ethernet Adapter

Quick Installation



1

Run the Setup Wizard

A Go to your computer and insert the Setup Wizard CD-ROM into the CD drive. The Setup Wizard should run automatically. If it does not, click **Start**. Click **Run**, and in the field that appears, enter **D:\setup.exe** (if "D" is the letter of your CD drive).

B On the *Welcome* screen, click **Setup** to begin the installation.

Other options include the following:

- Click **User Guide** to view the online User Guide.
- Click **LINKSYS Web** to visit the Linksys website, www.linksys.com.
- Click **Exit** to exit the Setup Wizard.

C The *End User License Agreement* screen will appear. If you agree and want to begin the installation, click **Next**.

D The *Preparing to Install* screen will appear briefly. If you want to cancel the installation, click the **Cancel** button.



B



C



D

E Connect one end of an Ethernet network cable to the Ethernet port of the Adapter. Connect the other end to an Ethernet port on your computer, which is running the Setup Wizard.

Plug the Adapter into an electrical outlet.

Then click **Next**.



E

Plugs Directly into Outlet



Connection to a Desktop Computer

IMPORTANT: Because the Adapter sends data over the powerlines of your residence, Linksys recommends that you plug the Adapter directly into an electrical outlet. The Adapter has its own power filter for protection against surges.

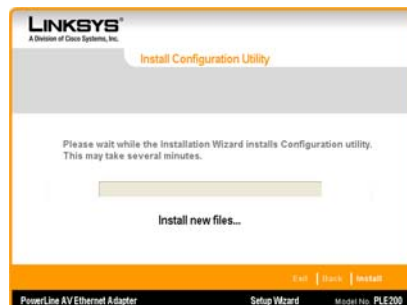
F The *Install Configuration Utility* screen will appear. (The Configuration Utility is a program that manages powerline devices.)

Wait a few minutes while the Setup Wizard installs the Configuration Utility. If you want to cancel the installation, click **Exit**.

G On the *Congratulations* screen, click **Online Registration** to register the Adapter on www.linksys.com/ registration.

To exit the Setup Wizard, click **Exit**.

Proceed to the next section, "Instructions for Connection."



F



G

A If the Adapter is for the computer it is already connected to, then the installation is complete. For information about the Configuration Utility, refer to the User Guide on the Setup Wizard CD-ROM.

If the Adapter is for a different network device, then proceed to step B.

B Disconnect the Ethernet network cable from the computer.

C Unplug the Adapter from its electrical outlet.

D Connect the Ethernet network cable to the appropriate network device.

E Plug the Adapter into an electrical outlet.

IMPORTANT: Because the Adapter sends data over the powerlines of your residence, Linksys recommends that you plug the Adapter directly into an electrical outlet. The Adapter has its own power filter for protection against surges.

Congratulations! The installation of the PowerLine AV Ethernet Adapter is complete.

For information about the Configuration Utility, refer to the User Guide on the Setup Wizard CD-ROM.



Plugs Directly into Outlet

LINKSYS®
A Division of Cisco Systems, Inc.

For additional information or troubleshooting help, refer to the User Guide on the Setup Wizard CD-ROM. You can also call or e-mail for further support.

24-hour Technical Support
800-326-7114

(toll-free from US or Canada)

E-mail Support
support@linksys.com

Website
<http://www.linksys.com> or
<http://support.linksys.com>

RMA (Return Merchandise Authorization)
<http://www.linksys.com/support>

FTP Site
<ftp://ftp.linksys.com>

Sales Information
800-546-5797 (800-LINKSYS)

Linksys is a registered trademark or trademark of Cisco Systems, Inc. and/or its affiliates in the U.S. and certain other countries. Copyright © 2006 Cisco Systems, Inc. All rights reserved.

PLE200-QI-61117NC JL