

LINKSYS® Quick Installation

This Quick Installation is meant to help you install the product quickly and easily. For detailed instructions on installation, configuration, and further setup options, please consult the User Guide.

Instant Wireless™ Series

Wireless PrintServer



WPS11 ver. 3

System Requirements

- Microsoft® Windows 95, 98, NT, 2000, ME, or XP
- One CD-ROM Drive
- One Ethernet Connection (for configuration purposes) and Cable
- Internet Explorer version 4.0 or higher, or Netscape Navigator version 4.0 or higher
- Printer with Parallel Connection

Package Contents

- One Wireless PrintServer (1)
- One Detachable Antenna (2)
- One AC Power Adapter (3)
- One CD-ROM (with User Guide) (4)
- Registration Card and Quick Installation (not shown)



1 Installing Your Wireless PrintServer

The Wireless PrintServer does **not** have a power switch. Whenever its power adapter is plugged in, the Wireless PrintServer is powered on. The Wireless PrintServer can be powered on before, during, or after your network is powered on. You can connect to the PrintServer wirelessly after the PrintServer has been properly configured via the Ethernet connection.

Connecting the Wireless PrintServer to Your Network

- Plug one end of a UTP Category 5 (or better) Ethernet cable into the Wireless PrintServer's LAN port.
- Connect the other end of the cable to a networked hub or switch.



Connecting a Printer to the Wireless PrintServer

- Connect your printer to the Wireless PrintServer's Printer (LPT) port with your printer cable.



- Turn on your printer.

- Attach the antenna to the Wireless PrintServer antenna port. Orient the antenna so that it is pointing straight up (at a 90-degree angle).

NOTE: The Wireless PrintServer's antenna is vertically polarized. This means it has greater transmission and reception range in a circular area surrounding it, but a shorter range directly above and below it. For maximum capability, the antenna should be oriented so it is perpendicular with the horizon.



Connecting the Power

- Plug the AC power adapter into the Wireless PrintServer's Power port.



- Plug the AC power adapter into the power outlet.

NOTE: Only use the power adapter packaged with the Wireless PrintServer. Using a different power adapter could damage the Wireless PrintServer.

- The LAN LED on the Wireless PrintServer's front will light up. If the LAN LED does not light up, see the Troubleshooting section of the User Guide.



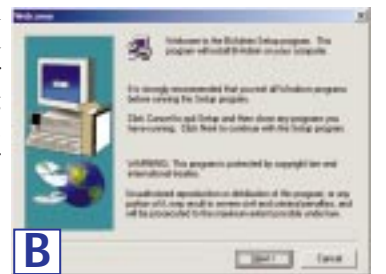
NOTE: Refer to the **Specifications** in the User Guide to determine how far other devices can be located from the Wireless PrintServer.

2 Installing the Autorun Bi-Admin Management Utility

- Insert the Setup Utility CD. A built-in autorun will begin the installation of the PrintServer's Bi-Admin Management Utility, and display the Welcome screen. Click the product you wish to install, and then click the **Install** tab to continue.



- The installation routine will begin to run and display a second Welcome screen. Close any other programs you might have running during this installation procedure, and click **Next** to continue or **Cancel** to forgo installation.



Continued on back!

C. The next screen that appears will request you to choose a destination folder. You can either use the default folder by clicking **Next** or choose an alternate folder by clicking **Browse** and selecting a folder from the window that pops up. Click **Back** to take a step backward in the installation, or **Cancel** to forgo installation.



C

D. The Bi-Admin Management Utility will now be installed. When it is complete, you will see the Information screen. Click the **OK** button.



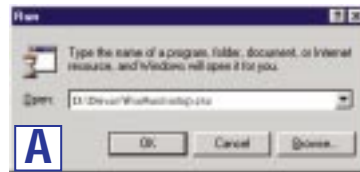
D

Note: After you have run the Autorun program and installed the Bi-Admin Management Utility, the Autorun will still run every time you insert the CD. Do NOT install the Bi-Admin Management Utility again. Click the **EXIT** tab to prevent duplicate installation.

3 Installing the Wireless PrintServer's Drivers

Note: Make sure that IP addresses are assigned to the PrintServer and PC(s). The PrintServer is set for DHCP by default.

A. To begin driver installation click **Start** and select **Run**. Type **D:\Driver\Win9xnt\setup.exe** (where "D" is the letter of your CD-ROM drive) in the Open field that appears. Click **OK**.



A

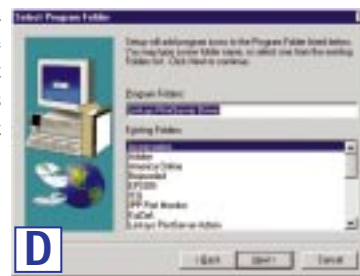
B. The Welcome screen appears. Read the text that appears and click **Next**.

C. Click **Next** to accept the default Destination Directory (recommended), shown below. If you choose to use another directory, click **Browse** and choose the appropriate directory. Then, click **Next**.



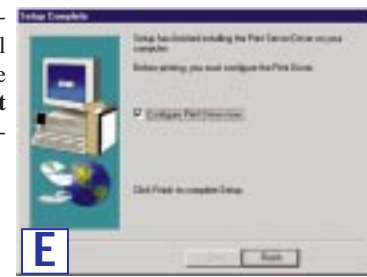
C

D. The following screen will assign a **Program Folder** from the Windows Taskbar. The default Program Folder is the **Linksys PrintServer Driver**. Click **Next** to continue.



D

E. The driver installation is now completed, but the Print Driver still needs to be configured. Check the box beside **Configure Print Driver Now**. Click **Finish** to continue.



E

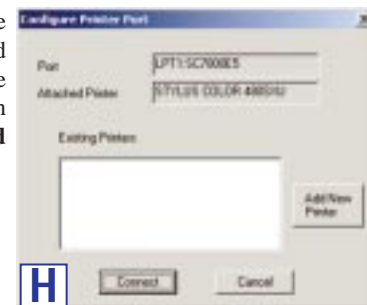
F. Read the instructions on the screen. Click **OK** to continue.

G. The Print Port Setup screen displays the Wireless PrintServer and all of the printers with which it communicates. Here you have the option of installing the printer by highlighting its description and clicking **Next**. You can also close this screen by clicking **Close**.



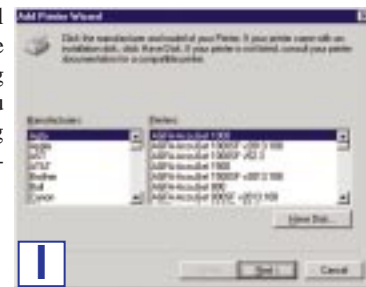
G

H. This will display the Configure Printer Port screen. Any installed printers will be displayed in the Existing Printers field. You can install a printer by clicking **Add New Printer**.



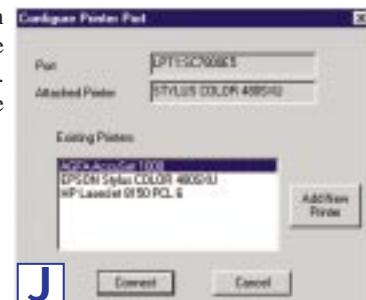
H

I. The **Add Printer Wizard** will come up at this point. Follow the standard procedure for adding printers under Windows. If you have any questions on adding printers, please refer to your printer's documentation.



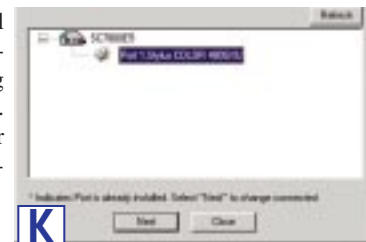
I

J. After your printer(s) have been added, you will return to the Configure Printer Port screen. Click **Connect** to connect the printer(s).



J

K. The Printer Port Setup screen will appear again, displaying the printers which are now communicating with the Wireless PrintServer. Click **Next** to add more printers, or **Close** to complete the installation/configuration procedure.



K

Installation of the Wireless PrintServer is now complete.

QI-WPS11-041802C-JL

WWW.LINKSYS.COM