



Package Contents

- Wireless-G Notebook Adapter with RangeBooster
- Setup Wizard CD-ROM
- User Guide on CD-ROM
- Quick Installation

2.4GHz
802.11g

Wireless-G

Notebook Adapter with RangeBooster

Quick Installation



1 Begin Installation

IMPORTANT: Do not install the Adapter in your PC until you are instructed to do so in Step 2 or the Adapter will not install correctly.

- A** The Network Adapter is installed and set up using the Setup Wizard that comes on the enclosed CD.
- B** To begin, insert the **Setup Wizard CD-ROM** into your CD-ROM drive. The Setup Wizard should run automatically, and the *Welcome* screen should appear.
- C** To install the Adapter, click **Click Here to Start** on the *Welcome* screen.
- D** After reading the License Agreement, click **Next** to continue the installation and Windows will begin copying the files onto your PC.
- E** Windows will begin copying the files onto your PC.
- F** The Setup Wizard will now prompt you to install the Adapter into your PC.

Proceed to Step 2.



2 Connect the Adapter

- A** Locate an available Card-Bus slot on your notebook PC.
- B** With the connector pin end facing the CardBus slot and the label facing up, slide the Adapter into the Card-Bus slot until it locks in place.
- C** Windows will begin copying the driver files to your computer. If Windows asks you for the original Windows CD-ROM, insert the CD-ROM, and direct Windows to its correct location (e.g., D:\).
- D** Then, click **Next**.
- E** Windows 98 and Windows Me users may need to restart their PCs again when prompted to do so.

Proceed to Step 3.



Connecting the Adapter

The next screen to appear will be the Available Wireless Network screen. From this screen, you can launch one of the two setup methods.

Important: For Quick Installation, use this document only if your network appears on the Available Wireless Network screen.

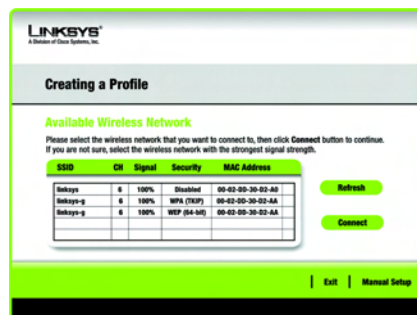
Manual Setup: If you are utilizing Manual Setup, click the Manual Setup button and follow the on screen prompts.

Setting Up the Adapter with Available Networks

On the *Available Wireless Network* screen, the available networks are listed in the center table by SSID. Select the wireless network you wish to connect to and click the **Connect** button. (If you do not see your network listed, you can click the **Refresh** button.)

If the network utilizes wireless security, you will need to configure security on the Adapter. If not, you will be taken directly to the *Congratulations* screen, shown in Step B.

A If wireless security is enabled on this network, you will see a wireless security screen. If your network



Available Wireless Network

utilizes WEP (Wired Equivalent Privacy) encryption, the *WEP Key Needed for Connection* screen will appear. If your network utilizes WPA Personal (Wi-Fi Protected Access), the *WPA Personal Needed for Connection* screen will appear. If your network utilizes PSK2 (Pre-Shared Key 2) encryption, the *PSK2 Key Needed for Connection* screen will appear.

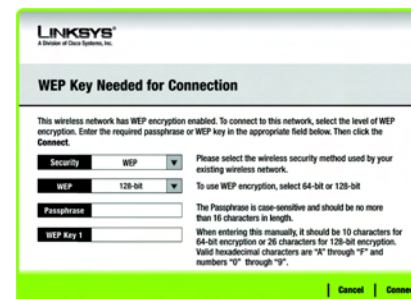
WEP Key Needed for Connection

Select **64-bit** or **128-bit**. Then, enter a passphrase or WEP key.

Passphrase - Enter a passphrase in the *Passphrase* field. This is case-sensitive and should not be longer than 16 alphanumeric characters.

WEP Key - The WEP key must match the WEP key of your wireless network. For 64-bit encryption, enter exactly 10 hexadecimal characters. For 128-bit encryption, enter exactly 26 hexadecimal characters. Valid hexadecimal characters are "0" to "9" and "A" to "F".

Click **Connect** and go to Step B.



WEP Key Needed

NOTE: Your passphrase must match the passphrase of your other wireless network devices and is compatible with Linksys wireless products only. (Non-Linksys wireless products, require a WEP key to be entered.)

WPA Personal Needed for Connection

Encryption - Select the type of algorithm, **TKIP** or **AES**, from the *Encryption* menu.

Passphrase - Enter a Passphrase of 8-63 characters in the *Passphrase* field.

Click **Connect** and go to Step B.

PSK2 Needed for Connection

Enter a Passphrase of 8-63 characters in the *Passphrase* field.

Click **Connect** and go to Step B.

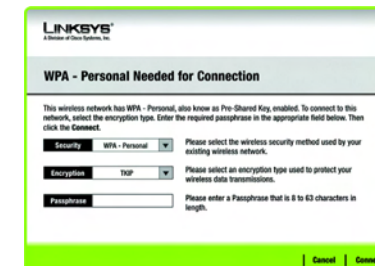
B After the Adapter is configured for the network, the *Congratulations* screen will appear. Click **Connect to Network** to connect to your network.

Congratulations! Setup is complete.

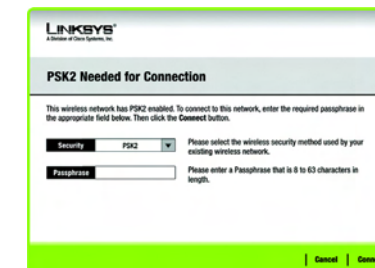
NOTE: After the Adapter is installed, the *Wireless Network Monitor* screen will open and its icon will appear in your PC's system tray. Double-click the icon if you want to open the *Monitor* for finding available wireless networks or configuration changes.



Wireless Network Monitor icon



WPA Personal Needed



PSK2 Personal Needed

LINKSYS[®]
A Division of Cisco Systems, Inc.

For additional information or troubleshooting help, refer to the User Guide on the Setup CD-ROM. You can also call or email for further support.

24-hour Technical Support
800-326-7114
(toll-free from US or Canada)

E-mail Support
support@linksys.com

Website
<http://www.linksys.com> or
<http://support.linksys.com>

RMA (Return Merchandise Authorization)
<http://www.linksys.com/support>

FTP Site
<ftp://ftp.linksys.com>

Sales Information
800-546-5797 (800-LINKSYS)

Linksys is a registered trademark or trademark of Cisco Systems, Inc. and/or its affiliates in the U.S. and certain other countries. Copyright © 2006 Cisco Systems, Inc. All rights reserved.