



Package Contents

- Wireless-G USB Network Adapter with SpeedBooster
- USB Cable
- Setup CD-ROM with User Guide
- Quick Installation
- Registration Card

2.4GHz 802.11g Wireless-G USB Network Adapter with SpeedBooster
Quick Installation for Windows 2000 and XP



1 Set up the Wireless-G USB Network Adapter with SpeedBooster

IMPORTANT: Do not connect the Adapter to Your PC until instructed to do so or the setup will not work.

A Insert the Setup Wizard CD-ROM into your CD-ROM drive. The Setup Wizard should run automatically, and the *Welcome* screen should appear. If it does not, click the **Start** button and choose **Run**. In the field that appears, enter **D:\setup.exe** (if "D" is the letter of your CD-ROM drive).

B To install the Adapter, click the **Install** button on the *Welcome* screen.

C After reading the License Agreement, click **Next**.

D Choose a wireless network mode. Click the **Infrastructure Mode** radio button if you want your wireless computers to network with computers on your wired network using a wireless access point. Click the **Ad-Hoc Mode** radio button if you want multiple wireless computers to network directly with each other.

In the *SSID* field, enter the SSID or name for your wireless network. The SSID must be identical for all devices in the network. Click **Next**.



B



C



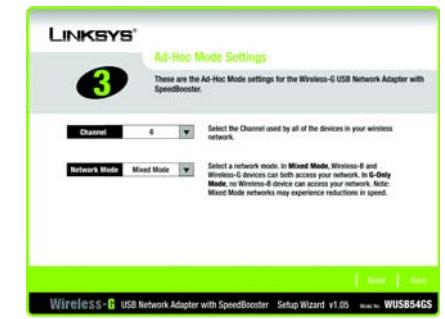
D

E If you chose Infrastructure Mode, go to Step F now.

If you chose Ad-Hoc Mode, select the channel that your network uses. For the Network Mode, select **Mixed Mode** to allow both Wireless-G and Wireless-B computers on the network, or select **G-Only Mode** to allow only Wireless-G computers. Then click **Next**.

F If your network doesn't use any security method, select **Disabled** and click **Next**. Proceed to Step H.

If you want security, select the security method you want to use: **WEP**, **PSK**, **PSK + RADIUS**, or **RADIUS**. (WEP stands for Wired Equivalent Privacy, and PSK stands for Pre-Shared Key, RADIUS stands for Remote Authentication Dial-In User Service.) Then click **Next** and proceed to Step G.



E



F

G Proceed to the appropriate instructions for your security method.

1 WEP

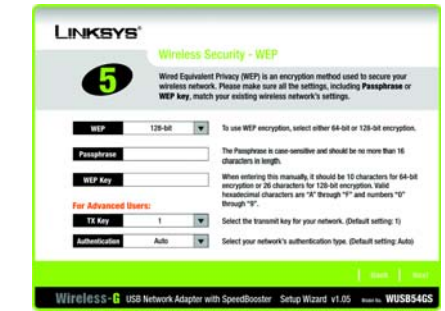
- a** Select **64-bit** or **128-bit** from the drop-down menu.
- b** Enter your Passphrase in the *Passphrase* field, and the WEP key will be automatically generated.

To manually enter the WEP key, leave the *Passphrase* field blank and enter the WEP key in the *WEP Key* field.

- c** Click **Next**, and go to Step H.

2 PSK

- a** Select the encryption method you want to use, **TKIP** or **AES**, from the drop-down menu.
- b** Enter your Passphrase or Pre-Shared Key in the *Passphrase* field.
- c** Then click **Next** and proceed to Step H.



WEP



PSK



LINKSYS
A Division of Cisco Systems, Inc.

For additional information or troubleshooting help, refer to the User Guide on the Setup CD-ROM. You can also call or e-mail for further support.

24-hour Technical Support
800-326-7114
(toll-free from US or Canada)

E-mail Support
support@linksys.com

Website
<http://www.linksys.com> or
<http://support.linksys.com>

RMA (Return Merchandise Authorization)
<http://www.linksys.com/support>

FTP Site
<ftp://ftp.linksys.com>

Sales Information
800-546-5797 (800-LINKSYS)

Linksys is a registered trademark or trademark of Cisco Systems, Inc. and/or its affiliates in the U.S. and certain other countries. Copyright © 2004 Cisco Systems, Inc. All rights reserved.

A Connect one end of the included USB cable to the USB port of the Adapter.

B Connect the other end to a USB port on your PC. When the Adapter is plugged in, the Power LED should light up.

C For Windows XP users, a *Found New Hardware* screen may appear. Click **Next**.

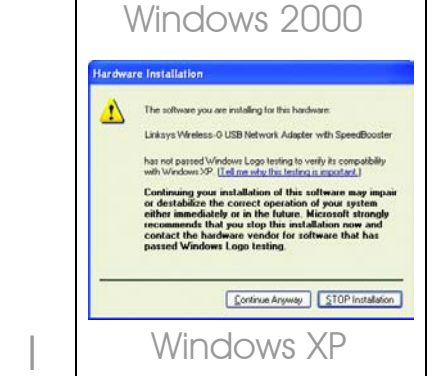
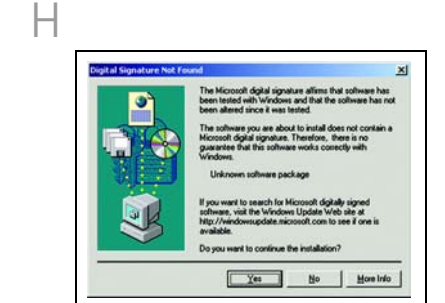
D You may see a screen indicating that a digital signature was not found. This software has been tested and works properly with Windows 2000 and XP. Click the **Yes** or **Continue Anyway** button.

E Raise the antenna. It should point straight up into the air, at a 90° angle from the Adapter.

F After the Adapter is installed, the Wireless Network Monitor icon will appear in the system tray at the bottom right-hand corner of your screen.

Double-click the icon if you want to check the link information, search for available wireless networks, or make additional configuration changes.

Congratulations! The installation of the Wireless-G USB Network Adapter with SpeedBooster is complete.



d From the *Certificate* drop-down menu, select the authentication certificate.

e Click **Next**, and go to Step H.

H The Setup Wizard will ask you to review your settings before it starts to copy files. Click **Next** to save these settings, or click **Back** to change any settings.

I You may see a screen indicating that a digital signature was not found. This software has been tested and works properly with Windows 2000 or XP. Click the **Yes** or **Continue Anyway** button.

J After the software has been successfully installed, the *Congratulations* screen will appear. Click **Exit**.

e Select the encryption method you want to use, **TKIP** or **AES**.

f Click **Next**, and go to Step H.

4 RADIUS

Select the authentication method you want to use, **EAP-TLS** or **EAP-PEAP**.

EAP-TLS

a Enter the login name in the *Login Name* field.

b Enter the name of the authentication server in the *Server Name* field.

c From the *Certificate* drop-down menu, select the authentication certificate.

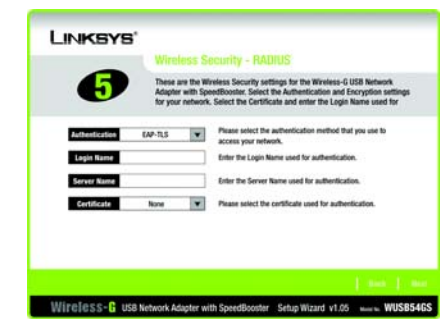
d Click **Next**, and go to Step H.

EAP-PEAP

a Enter the login name in the *Login Name* field.

b Enter the password in the *Password* field.

c Enter the name of the authentication server in the *Server Name* field.



RADIUS
EAP-TLS



RADIUS
EAP-PEAP

3 PSK + RADIUS

Select the authentication method you want to use, **EAP-TLS** or **EAP-PEAP**.

EAP-TLS

a Enter the login name in the *Login Name* field.

b Enter the name of the authentication server in the *Server Name* field.

c From the *Certificate* drop-down menu, select the authentication certificate.

d Select the encryption method you want to use, **TKIP** or **AES**.

e Click **Next**, and go to Step H.

EAP-PEAP

a Enter the login name in the *Login Name* field.

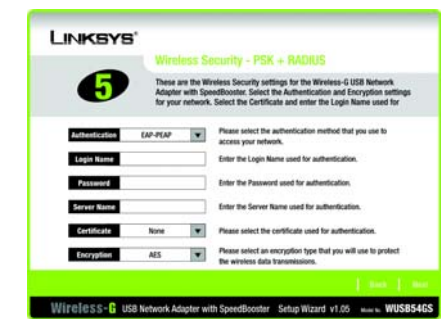
b Enter the password in the *Password* field.

c Enter the name of the authentication server in the *Server Name* field.

d From the *Certificate* drop-down menu, select the authentication certificate.



PSK + RADIUS
EAP-TLS



PSK + RADIUS
EAP-PEAP