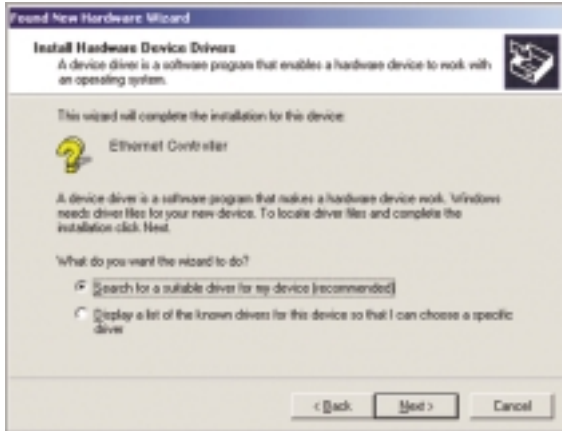


EtherFast® Series 10/100 LAN Card

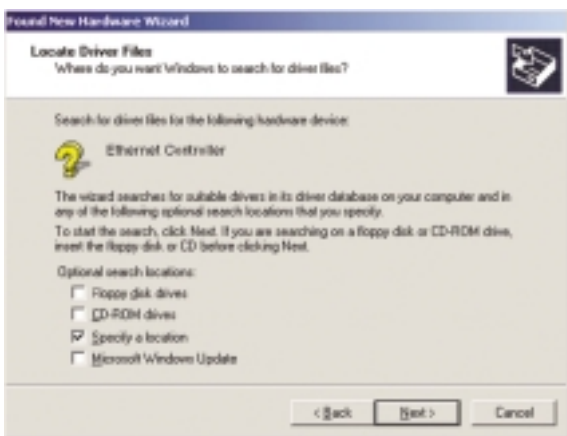
Model No.: LNE100TX v4.1
LNE100TXU v4.1

After physically installing the EtherFast® 10/100 Card in your PC, follow these instructions to install the drivers for your network adapter.

1. Start your Windows 2000 PC.
2. Windows will display the *Found New Hardware Wizard* box. Click **Next**.
3. The *Install Hardware Device Drivers* dialog box will appear. When *Ethernet Controller* is displayed, select “*Search for a suitable driver for your device (Recommended)*.” Click **Next**.



4. The *Locate Driver Files* dialog box will appear. Select “*Specify a location*.” Click **Next**.



5. When the *Found New Hardware Wizard* box appears, insert the *Linksys EtherFast 10/100 Driver Disk* into your floppy drive.

Note: Do not click **Cancel** or **Skip** at any time during the installation process. Doing so will prevent your driver from being properly installed on your PC.

Quick Installation For Windows 2000

This sheet will guide you through the basic steps needed to install the EtherFast® 10/100 LAN Card driver in your PC. If you have any problems during installation, see the **Troubleshooting** section in the **User Guide**.

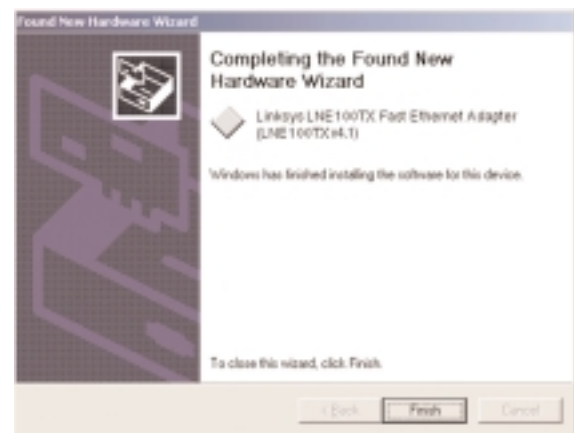
6. In the “*Copy manufacturer’s files from*” field, type “*A:\Win2000*.” Click **OK**.



7. The *Driver File Search Results* dialog box will appear. Click **Next**.



8. The *Completing the Found New Hardware Wizard* dialog box will appear. Click **Finish**.



9. Remove the floppy disk from the floppy drive.

Installation is now complete.

If you want to share files or printers, see your Windows 2000 documentation.