

LINKSYS®

Quick Installation

For Windows 98, Me, and 2000 ONLY

This Quick Installation is meant to help you install the product quickly and easily. For detailed instructions on installation, configuration, and further setup options, please consult the User Guide.

Instant Wireless® Series

Dual-Band Wireless A+G Notebook Adapter



WPC55AG

Package Contents

- Dual-Band Wireless A+G Notebook Adapter (1)
- Setup CD-ROM with User Guide (2)
- Quick Installation and Registration Card



1 Installing the Dual-Band Wireless A+G Notebook Adapter Software

Note to Windows XP users: Refer to the Quick Installation for Windows XP.

A. Insert the Setup CD-ROM into your CD-ROM drive. The Setup Wizard should run automatically, and the *Welcome* screen should appear. If it does not, click **Start** and choose **Run**. In the field that appears, enter **D:\setup.exe** (if “D” is the letter of your CD-ROM drive).

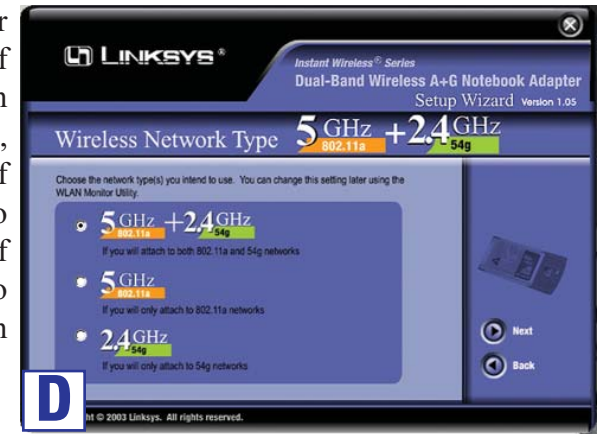


B. Click the **Install** button.

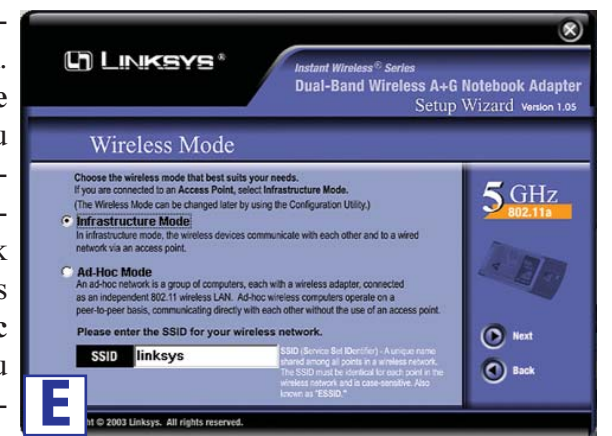
C. After reading the License Agreement, click **Next** if you agree, or **Cancel** to end the installation.



D. Next you will choose your type of wireless network. If you will connect to both 802.11a and 54g networks, select **5GHz + 2.4GHz**. If you will connect only to 802.11a, select **5GHz**. If you will connect only to 54g, select **2.4GHz**. Then click **Next**.



E. Next you will choose a wireless mode for your network. Click the **Infrastructure Mode** radio button if you want your wireless computers to network with computers on your wired network using a wireless access point. Click the **Ad-Hoc Mode** radio button if you want multiple wireless computers to network directly with each other.



In the *SSID* field, enter the **SSID** of your wireless network. The SSID must be identical for all devices in the network. The default setting is **linksys** (all lowercase). Click **Next**.

Continued on back

F. If you chose Infrastructure Mode, go to **Step G** now. If you chose Ad-Hoc Mode, select the correct operating channel for your network. The channel you choose should match the channel set on the other devices in your wireless network. Click **Next**.



Note: If you chose 5GHz + 2.4GHz in Step D, then go to Step G now. The Adapter will automatically select the best channel for you.

G. The Setup Wizard will ask you to review your settings before it starts to install files. Click **Next** if you are satisfied with your settings, or click **Back** to change any settings.



H. After the software has been successfully installed, click **Exit**.

Proceed to Step 2.

2 Installing the Dual-Band Wireless A+G Notebook Adapter into Your PC

A. Turn off your notebook PC.


B. Locate an available CardBus slot on your notebook PC.

C. With the Adapter's label facing up, as shown in Figure C, slide it completely into the CardBus slot.



D. Turn on your notebook PC.

E. Windows will begin copying the driver files to your computer. If Windows asks you for the original Windows CD-ROM, insert the CD-ROM, and direct Windows to its proper location (e.g., **D:**).

F. After installing the Adapter, the Dual-Band Wireless A+G Notebook Adapter WLAN Monitor icon will appear in the system tray, which is located at the bottom righthand corner of your screen.  **F**

If you want to use the WLAN Monitor to check the link information, search for available wireless networks, or make additional configuration changes, then double-click the icon.

Congratulations! The installation of the Dual-Band Wireless A+G Notebook Adapter is complete.

For additional information or troubleshooting help, refer to the User Guide on the Setup CD-ROM. You can also call or e-mail for further support.

24-hour Technical Support 800-326-7114 (toll-free from US or Canada)
E-mail Support support@linksys.com
Website http://www.linksys.com or http://support.linksys.com

RMA (Return Merchandise Authorization) Issues http://www.linksys.com/support
FTP Site ftp://ftp.linksys.com
Sales Information 800-546-5797 (800-LINKSYS)