



1 Installing the Dual-Band Wireless A+G Notebook Adapter Software

A Insert the Setup CD-ROM into your CD-ROM drive. The Setup Wizard should run automatically, and the Welcome screen should appear. If it does not, click **Start** and choose **Run**. In the field that appears, enter **D:\setup.exe** (if "D" is the letter of your CD-ROM drive).

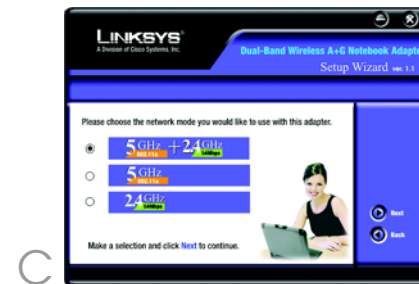
Click the **Install** button.

B After reading the License Agreement, click **Next** to continue the installation.

C Next you will choose your type of wireless network. If you will connect to both 802.11a and 54g networks, select **5GHz + 2.4GHz**. If you will connect only to 802.11a, select **5GHz**. If you will connect only to 54g, select **2.4GHz**. Then click **Next**.

D Next you will choose a wireless mode for your network. Click the **Infrastructure Mode** radio button if you want your wireless computers to network with computers on your wired network using an access point. Click the **Ad-Hoc Mode** radio button if you want multiple wireless computers to network directly with each other.

In the SSID field, enter the SSID of your wireless network. The SSID must be identical for all



devices in the network. The default setting is linksys (all lowercase). Click **Next**.

NOTE: If you chose 5GHz + 2.4GHz in Step C, then go to Step F now. The Adapter will automatically select the best channel for you.

E If you chose Infrastructure Mode, go to Step F now. If you chose Ad-Hoc Mode, select the correct operating channel for your network.

The Network Mode setting is available only for 54g networks. If you have Wireless-G (802.11g) and Wireless-B (802.11b) devices in your network, then keep the default Network Mode setting, Mixed Mode. If you have only Wireless-G devices, select **G-Only Mode**.

Click **Next**.

F The Setup Wizard will ask you to review your settings before it starts to install files. Click **Next** if you are satisfied with your settings, or click **Back** to change any settings.

G After the software has been successfully installed, click **Exit**.





Package Contents


- Dual-Band Wireless A+G Notebook Adapter
- Setup CD-ROM
- User Guide on CD-ROM
- Quick Installation
- Registration Card

5GHz + 2.4GHz
802.11a + 802.11g

Dual-Band Wireless A + G

Notebook Adapter

Quick Installation



Model No. **WPC55AG**

2 Installing the Dual-Band Wireless A+G Notebook Adapter into Your PC

- A Turn off your notebook PC.
- B Locate an available CardBus slot on your notebook PC.
- C With the Adapter's label facing up, as shown in Figure C, slide it completely into the CardBus slot.
- D Turn on your notebook PC.
- E Windows will begin copying the driver files to your computer. If Windows asks you for the original Windows CD-ROM, insert the CD-ROM, and direct Windows to its location (e.g., D:\).
- F After installing the Adapter, the Dual-Band Wireless A+G Notebook Adapter WLAN Monitor icon will appear in the system tray, which is located at the bottom right corner of your screen.

If you want to use the WLAN Monitor to check the link information, search for available wireless networks, or make additional configuration changes, then double-click the icon.

Windows XP users: Proceed to Step 3.

Windows 98, Me, and 2000 users: Congratulations! The installation of the Dual-Band Wireless A+G Notebook Adapter is complete.



C



F

3 Disabling Windows XP Wireless Zero Configuration

NOTE: If you are using 802.1x authentication, do not disable Windows XP Wireless Zero Configuration because you must use it to configure the Adapter. You will be able to use the WLAN Monitor for information purposes only.

For more information about wireless networking on a Windows XP computer, click **Start** and then **Help and Support**. Enter the keyword **wireless** in the field provided, and press the **Enter** key.

Windows XP has a built-in configuration tool. To configure the Adapter using the Dual-Band Wireless A+G Notebook Adapter WLAN Monitor, you need to disable Windows XP Wireless Zero Configuration. Follow the instructions in Steps A-C.

- A The Windows XP Wireless Zero Configuration icon will appear in your computer's system tray. Double-click the icon.
- B The screen that appears will show any available wireless network. Click **Advanced**.



A

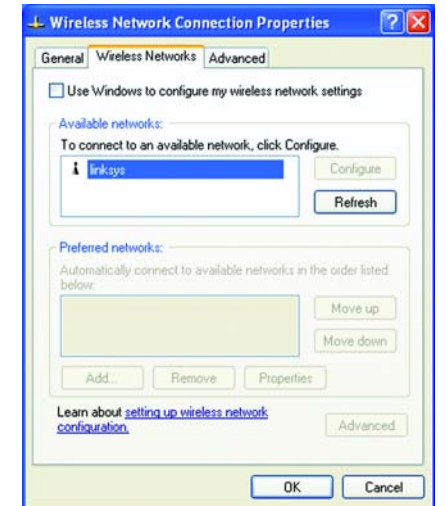


B

- C On the Wireless Networks screen, uncheck the box next to Use Windows to configure my wireless network settings.

Then click **OK**.

Windows XP users: Congratulations! The installation of the Dual-Band Wireless A+G Notebook Adapter is complete.



C

LINKSYS®
A Division of Cisco Systems, Inc.

For additional information or troubleshooting help, refer to the User Guide on the Setup CD-ROM. You can also call or email for further support.

24-hour Technical Support
E-mail Support
Website

800-326-7114 (toll-free from US or Canada)
support@linksys.com

<http://www.linksys.com> or
<http://support.linksys.com>

RMA (Return Merchandise Authorization)
FTP Site
Sales Information

<http://www.linksys.com/support>
<ftp://ftp.linksys.com>
800-546-5797 (800-LINKSYS)

Linksys is a registered trademark or trademark of Cisco Systems, Inc. and/or its affiliates in the U.S. and certain other countries. Copyright © 2003 Cisco Systems, Inc. All rights reserved.