



Quick Installation

For Windows 98, Me, and 2000 ONLY

This Quick Installation is meant to help you install the product quickly and easily. For detailed instructions on installation, configuration, and further setup options, please consult the User Guide.

Instant Wireless® Series

Dual-Band Wireless A+G PCI Adapter



WMP55AG

Package Contents

- Dual-Band Wireless A+G PCI Adapter (1)
- Setup CD-ROM with User Guide (2)
- Quick Installation and Registration Card



1 Installing the Dual-Band Wireless A+G PCI Adapter Software

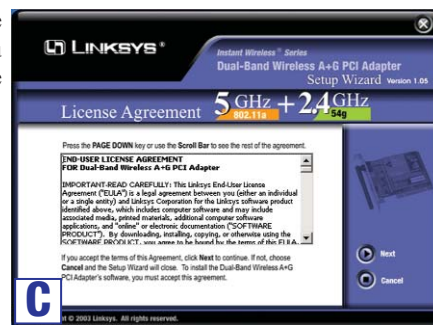
Note to Windows XP users: Refer to the Quick Installation for Windows XP.

A. Insert the Setup CD-ROM into your CD-ROM drive. The Setup Wizard should run automatically, and the *Welcome* screen should appear. If it does not, click **Start** and choose **Run**. In the field that appears, enter **D:\setup.exe** (if “D” is the letter of your CD-ROM drive).

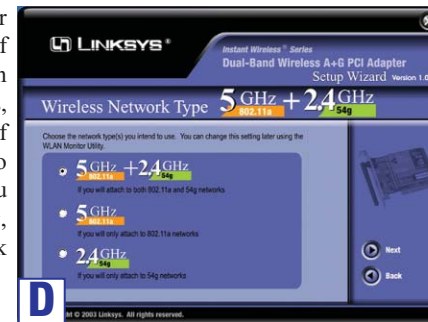


B. Click the **Install** button.

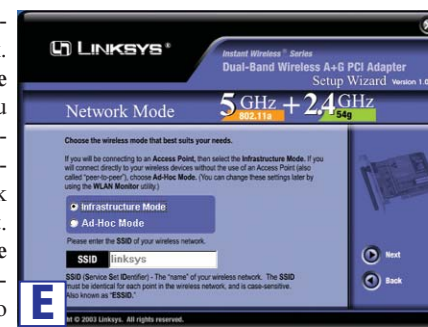
C. After reading the License Agreement, click **Next** if you agree, or **Cancel** to end the installation.



D. Next you will choose your type of wireless network. If you will connect to both 802.11a and 54g networks, select **5GHz + 2.4GHz**. If you will connect only to 802.11a, select **5GHz**. If you will connect only to 54g, select **2.4GHz**. Then click **Next**.

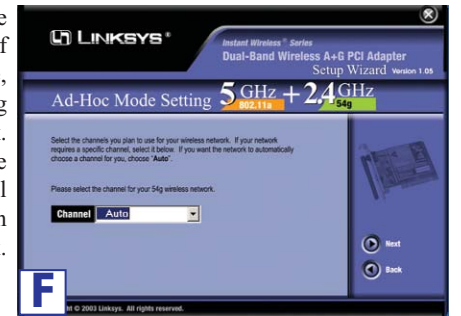


E. Next you will choose a wireless mode for your network. Click the **Infrastructure Mode** radio button if you want your wireless computers to network with computers on your wired network using a wireless access point. Click the **Ad-Hoc Mode** radio button if you want multiple wireless computers to network directly with each other.



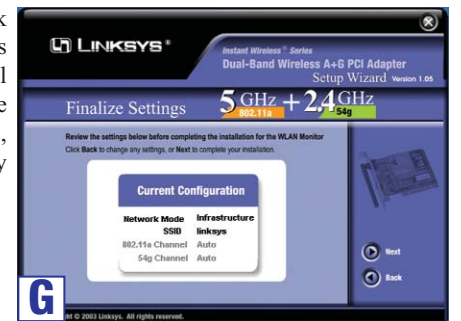
In the **SSID** field, enter the **SSID** of your wireless network. The SSID must be identical for all devices in the network. The default setting is **linksys** (all lowercase). Click **Next**.

F. If you chose Infrastructure Mode, go to **Step G** now. If you chose Ad-Hoc Mode, select the correct operating channel for your network. The channel you choose should match the channel set on the other devices in your wireless network. Click **Next**.



Note: If you chose **5GHz + 2.4GHz** in Step D, then go to Step G now. The Adapter will automatically select the best channel for you.

G. The Setup Wizard will ask you to review your settings before it starts to install files. Click **Next** if you are satisfied with your settings, or click **Back** to change any settings.



Continued on back

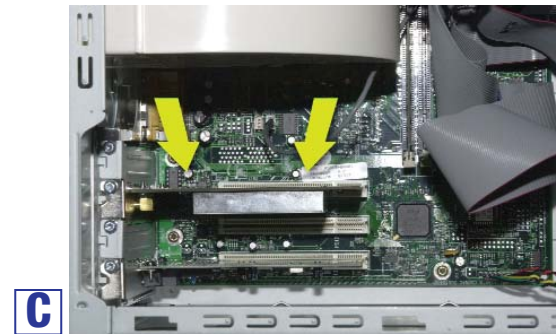
H. After the software has been successfully installed, you will see Figure H. Click **Exit**.



Proceed to Step 2.

2 Installing the Dual-Band Wireless A+G PCI Adapter into Your PC

- Turn off your desktop PC.
- Open your PC's case, and locate an available PCI slot on the motherboard. Check with your computer's manufacturer if you need instructions.
- Slide the Adapter into the PCI slot. Make sure that all of its pins are touching the slot's contacts. You may have to apply a bit of pressure to slide the Adapter all the way in.





- After the Adapter is set firmly in place, secure its fastening tab to your PC's chassis with a mounting screw. Then close your PC's case.

- Position the antenna straight up and perpendicular to the horizon. This will ensure optimum wireless operating range and performance.



- Power on your desktop PC.
- Windows will detect the new hardware and begin installing the driver files in your operating system.

For Windows 2000 users, you may be informed that a digital signature has not been found after Windows detects the new hardware. This is normal, and it has been verified that the Adapter does work with Windows 2000. Click the **Yes** button to continue.

- After installing the Adapter, the Dual-Band Wireless A+G PCI Adapter WLAN Monitor icon will appear in the system tray, which is located at the bottom righthand corner of your screen.  

If you want to use the WLAN Monitor to check the link information, search for available wireless networks, or make additional configuration changes, then double-click the icon.

Congratulations! The installation of the Dual-Band Wireless A+G PCI Adapter is complete.

For additional information or troubleshooting help, refer to the User Guide on the Setup CD-ROM. You can also call or e-mail for further support.

24-hour Technical Support	800-326-7114 (toll-free from US or Canada)
E-mail Support	support@linksys.com
Website	http://www.linksys.com or http://support.linksys.com
FTP Site	ftp://ftp.linksys.com