

Package Contents

- Dual-Band Wireless A+G PCI Adapter
- Setup Wizard CD-ROM
- User Guide on CD-ROM
- Quick Installation
- Registration Card

Dual-Band
5GHz + 2.4GHz
802.11a + 802.11g

Dual-Band
Wireless A+G
PCI Adapter

Quick Installation

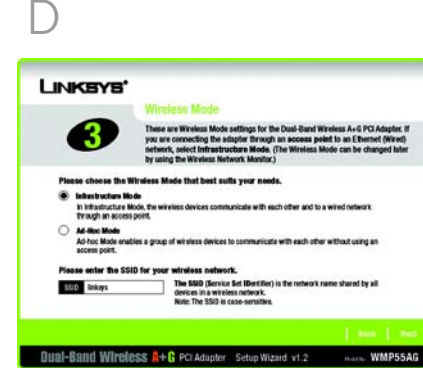


1 Set up the Dual-Band Wireless A+G PCI Adapter

IMPORTANT: You must run the Setup Wizard before inserting the Adapter into your desktop PC.

- A** Insert the Setup Wizard CD-ROM into your CD-ROM drive. The Setup Wizard should run automatically, and the *Welcome* screen should appear. If it does not, click the **Start** button and choose **Run**. In the field that appears, enter **D:\setup.exe** (if "D" is the letter of your CD-ROM drive).
- B** To install the Adapter, click the **Install** button on the *Welcome* screen.
- C** After reading the License Agreement, click **Next**.
- D** Now, choose a network type. Click the **5GHz or 2.4GHz** radio button if you will connect to 802.11a, 802.11g and/or 802.11b networks. Click the **5GHz only** radio button if you will connect only to 802.11a networks. Click the **2.4GHz only** radio button if you will connect only to 802.11g and/or 802.11b networks. Then, click **Next**.

E Choose a wireless network mode. Click the **Infrastructure Mode** radio button if you want your wireless computers to network with computers on your wired network using a wireless access point. Click the **Ad-Hoc Mode** radio button if you want multiple wireless computers to network directly with each other.



E

In the *SSID* field, enter the SSID or name for your wireless network. The SSID must be identical for all devices in the network. Click **Next**.

F If you chose Infrastructure Mode, go to Step G now.

Select the correct operating channel for your wireless network, which must match the channel set on the other devices in your wireless network. If you are unsure about which channel to use, keep the default setting, **Auto**. Then, click **Next**.

G If your network doesn't use any security method, select **Disabled**. Then, click **Next** and proceed to Step I.

If your network does utilize security, select the security method you want to use: **WEP**, **WPA-Personal**, **WPA-Enterprise**, **RADIUS**, or **LEAP**. WEP stands for Wired Equivalent Privacy, and WPA stands for Wi-Fi Protected Access. WPA is a stronger security method than WEP. RADIUS stands for Remote Authentication Dial-In User Service, and LEAP stands for Lightweight Extensible Authentication Protocol.



F



G

H Proceed to the appropriate instructions for your security method. Choose the security method that is right for your network. Most networks require only **WEP** or **WPA - Personal**.

WEP

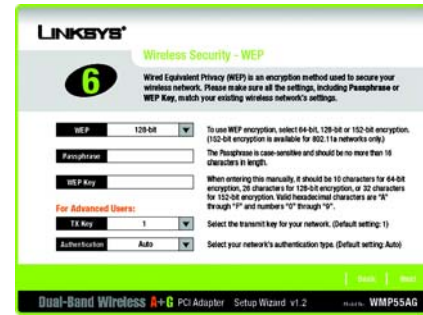
- Select **64-bit**, **128-bit**, or **152-bit** from the drop-down menu. (Select 152-bit encryption when using ONLY a 5GHz/802.11a network.)
- Enter your *Passphrase* in the *Passphrase* field, and the WEP key will be automatically generated.

To manually enter the WEP key, leave the *Passphrase* field blank and enter the WEP key in the *WEP Key* field.

C Click **Next**, and go to Step I.

WPA - Personal

- Select the encryption method you want to use, **TKIP** or **AES**, from the drop-down menu.
- Enter your *Passphrase* or *Pre-Shared Key* in the *Passphrase* field.
- Then click **Next** and proceed to Step I.



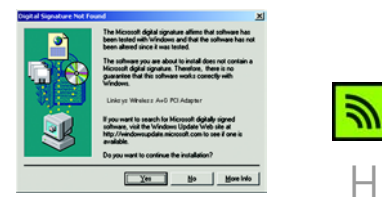
WEP



WPA - Personal

2 Connect the Dual-Band Wireless A+G PCI Adapter

- A** Turn off your desktop PC.
- B** Open your PC's case, and locate an available PCI slot on the motherboard.
- C** Slide the Adapter into the PCI slot. Make sure that all of its pins are touching the slot's contacts.
- D** After the Adapter is set firmly in place, secure its fastening tab to your PC's chassis with a mounting screw. Then close your PC's case.
- E** Rotate the antenna so that it is positioned straight up and perpendicular to the horizon.



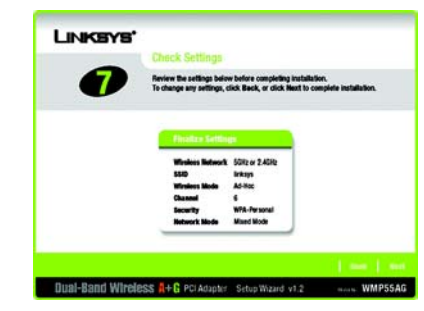
- F** Power on your desktop PC.
- G** Windows will detect the new hardware and begin installing the driver files in your operating system.

Note: For Windows 2000 users, you may be informed that a digital signature has not been found after Windows detects the new hardware. This is normal, and it has been verified that the Adapter does work with Windows 2000. Click **Yes** to continue.

- H** After the Adapter is installed, the Wireless Network Monitor icon will appear in the system tray at the bottom right-hand corner of your screen.

NOTE: Double-click the icon if you want to check the link information, search for available wireless networks, or make additional configuration changes.

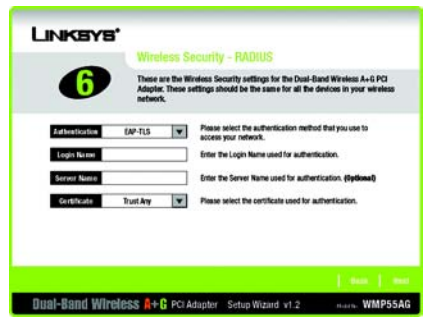
Congratulations! The installation of the Dual-Band Wireless A+G PCI Adapter is complete.



The Setup Wizard will ask you to review your settings before it starts to copy files. Click **Next** to save these settings, or click **Back** to change any settings.

If you are using Windows 2000, you may see a screen indicating that a digital signature was not found. This software has been tested and works properly with Windows 2000. Click the **Yes** button.

After the software has been successfully installed, the **Congratulations** screen will appear. Click **Exit**.



RADIUS EAP-TLS



RADIUS PEAP



RADIUS LEAP

RADIUS
RADIUS security is intended for **Advanced Users Only**. If you are an Advanced User, select the authentication method you want to use, **EAP-TLS** or **PEAP**.

- ### EAP-TLS
- a** Enter the login name in the *Login Name* field.
 - b** Enter the name of the authentication server in the *Server Name* field. (optional)
 - c** From the *Certificate* drop-down menu, select the authentication certificate.
 - d** Click **Next**, and go to Step 1.

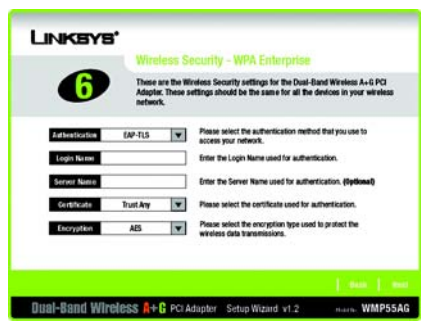
- ### PEAP
- a** Enter the login name in the *Login Name* field.
 - b** Enter the password in the *Password* field.
 - c** Enter the name of the authentication server in the *Server Name* field. (optional)
 - d** From the *Certificate* drop-down menu, select the authentication certificate.
 - e** Select the authentication method used inside the PEAP tunnel, **EAP-MSCHAP v2** or **Generic Token Card**.
 - f** Click **Next**, and go to Step 1.

- ### LEAP
- a** Enter the user name in the *User Name* field.
 - b** Enter your password in the *Password* field.
 - c** Enter your password again in the *Confirm* field.
 - d** Click **Next**, and go to Step 1.

WPA - Enterprise
WPA - Enterprise security is intended for **Advanced Users Only**. If you are an Advanced User, select the authentication method you want to use, **EAP-TLS** or **PEAP**.

- ### EAP-TLS
- a** Enter the login name in the *Login Name* field.
 - b** Enter the name of the authentication server in the *Server Name* field. (optional)
 - c** From the *Certificate* drop-down menu, select the authentication certificate.
 - d** Select the encryption method you want to use, **TKIP** or **AES**.
 - e** Click **Next**, and go to Step 1.

- ### PEAP
- a** Enter the login name in the *Login Name* field.
 - b** Enter the password in the *Password* field.
 - c** Enter the name of the authentication server in the *Server Name* field. (optional)
 - d** From the *Certificate* drop-down menu, select the authentication certificate.
 - e** Select the authentication method used inside the PEAP tunnel, **EAP-MSCHAP v2** or **Generic Token Card**.
 - f** Select the encryption method you want to use, **TKIP** or **AES**.
 - g** Click **Next**, and go to Step 1.



WPA - Enterprise EAP-TLS



WPA - Enterprise PEAP

LINKSYS[®]
A Division of Cisco Systems, Inc.

For additional information or troubleshooting help, refer to the User Guide on the Setup CD-ROM. You can also call or e-mail for further support.

24-hour Technical Support
800-326-7114
(toll-free from US or Canada)

E-mail Support
support@linksys.com

Website
http://www.linksys.com or
http://support.linksys.com

RMA (Return Merchandise Authorization)
http://www.linksys.com/support

FTP Site
ftp://ftp.linksys.com

Sales Information
800-546-5797 (800-LINKSYS)

Linksys is a registered trademark or trademark of Cisco Systems, Inc. and/or its affiliates in the U.S. and certain other countries. Copyright © 2005 Cisco Systems, Inc. All rights reserved.