

1 Set Up the PrintServer



Package Contents

- Wireless-G PrintServer with Multifunction Printer Support
- Start Here Folder
- Setup Wizard CD-ROM
- User Guide on CD-ROM
- Network Cable
- USB 2.0 Cable
- Power Supply
- Quick Installation

NOTE: Linksys strongly recommends that you set up your printer and install your printer's driver before you install the PrintServer's driver.

Before you begin, note the PrintServer's default name. It is shown in the Server field on the sticker located on the back panel. During the Setup Wizard, this name is used to identify the PrintServer you are currently installing.

A Insert the Setup CD-ROM into the computer's CD-ROM drive. The Setup Wizard should run automatically. If it does not, click the **Start** button and choose **Run**. In the box that appears, enter **D:\SetupWizard.exe** (if "D" is the letter of your CD-ROM drive).

B Click **Click Here to Start**.

C Click **Set up PrintServer**.

D Disconnect the USB printer cable from the computer, and disconnect the printer's power adapter from the electrical outlet. Click **Next**.

E Connect the USB printer cable to the USB port on the PrintServer. Click **Next**.



F Connect the Ethernet network cable to your router and the Ethernet port of the PrintServer.

(The Ethernet connection is for configuration purposes only. Later you can disconnect the Ethernet network cable when the PrintServer has connected wirelessly.)

Click **Next**.

G Connect the power adapter to the PrintServer and an electrical outlet. Click **Next**.

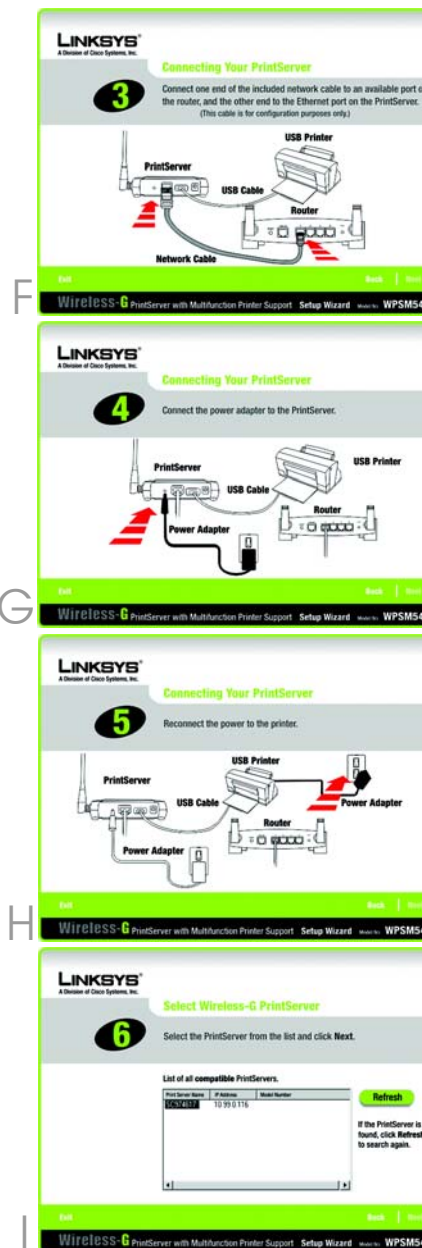
H Reconnect the printer's power adapter to the electrical outlet.

Click **Next**.

I Wait a few moments while the system searches for the PrintServer.

Select the appropriate PrintServer. If you cannot find the PrintServer, click **Refresh List**.

Click **Next**.



J If your network uses a router that automatically assigns IP addresses, select **Automatically obtain an IP address (DHCP)**. If your network uses a static IP address, select **Set IP configuration manually**, and enter the IP Address, Subnet Mask, and Gateway in the fields provided.

Click **Next**.

K Create a password and enter it in the **Password** field. Enter the new password again in the **Confirm** field.

Click **Next**.

L Select the wireless network that the PrintServer should join. If you do not see the wireless network you want to use, click **Refresh** and locate the network. Click **Next** and go to step N.

If you want to manually enter the settings for the wireless network, click **Manual Setup**. Click **Next** and go to step M.

M If you clicked Manual Setup, the **Configure Wireless Settings** screen appears with the **SSID** field. Enter the SSID or name of the wireless network. Click **Next**.



N

The wireless security method of your network should be automatically selected. Proceed to the instructions for your wireless security method.

If wireless security is disabled, keep the default, **Disabled**, and click **Next**.

WPA Pre-Shared Key (TKIP)

Enter a Passphrase (also known as a Pre-Shared Key) that is 8-63 characters in length. Click **Next**.

WEP (128-Bit) or WEP (64-Bit)

Enter a Passphrase and click **Next**.

If you want to manually enter the WEP key, leave the *Passphrase* field blank and click **Next**. A new screen will appear. In the *Key 1* field, enter your WEP key. Click **Next**.

O

Make sure your new settings are correct. To save the new settings, click **Next**.

P

Disconnect the power adapter from the PrintServer. Click **Next**.



WPA



WEP



Q

Disconnect the Ethernet network cable from the PrintServer and router. Click **Next**.

R

Reconnect the power adapter to the PrintServer and click **Next**.

S

The next screen will indicate that the PrintServer is now part of your wireless network. Click **Next**.

T

The PrintServer is now connected to your wireless network.

Next you need to install the PrintServer driver on your computer. Click **Set up Computer**.



T

2

Set Up the Computer

NOTE: Linksys strongly recommends that you set up your printer and install your printer's driver before you install the PrintServer's driver.

Make sure you have no programs running on your computer.

A Select the printer connected to the PrintServer. If you do not see the PrintServer or printer, click **Refresh**. Click **Next**.

B The Setup Wizard will install the PrintServer's driver and re-install the printer drivers.

Make sure the printer is connected to the PrintServer, and click **Next**.

C Please wait while the printer drivers are configured for use with the PrintServer. This may take two to three minutes.

D You will be notified when the installation of the PrintServer is complete. If you want to print a test page, click **Test Print**.

Click **Finish**.

E Run the Setup Wizard on the Setup CD-ROM on your other computers. Click **Click Here to Start**, and then click **Set up Computer**.

Congratulations! The installation of the Wireless-G PrintServer with Multifunction Support is complete.

Use the PrintServer

After you have installed the PrintServer, the PrintServer diagnostic icon will appear in the system tray of your desktop.

NOTE: The computer **MUST** be connected to the printer for all scans, faxes, or usage of a memory card. To connect the computer to the printer, right-click the icon, and then click **Connect**. (The computer will automatically connect to the printer for print jobs.)

When you right-click the PrintServer diagnostic icon, you will see a menu:

About - Displays the version number of the PrintServer diagnostic utility.

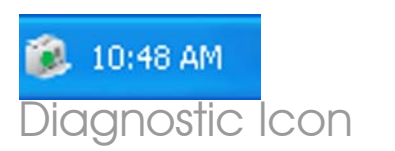
Info - Displays the *Print Server Information* screen of the diagnostic utility.

Connect - To scan, fax, or read information from a memory card using the software that came with your multifunction printer, the computer must be connected to the printer. To connect to the printer, click **Connect**.

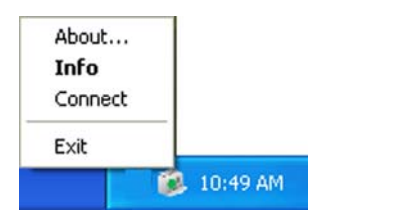
When you have finished using the printer software, right-click the **diagnostic** icon, and click **Disconnect**.

Exit - Closes the diagnostic utility.

NOTE: For more information about the diagnostic utility, refer to "Chapter 5: Using the Diagnostic Utility" of the User Guide on the Setup CD-ROM.



Diagnostic Icon



Diagnostic Menu

LINKSYS[®]
A Division of Cisco Systems, Inc.
For additional information or troubleshooting help, refer to the User Guide on the CD-ROM or the Technical Support Insert. You can also e-mail for further support.

Website
<http://www.linksys.com/international>
Product Registration
<http://www.linksys.com/registration>

Linksys is a registered trademark or trademark of Cisco Systems, Inc. and/or its affiliates in the U.S. and certain other countries. Copyright © 2006 Cisco Systems, Inc. All rights reserved.