



**Package Contents**

- One PrintServer for USB with 4-Port Switch
- One Power Supply
- One Setup CD with User Guide
- One Ethernet Network Cable
- One USB cable
- One Quick Installation
- One Registration Card

# PrintServer for USB

with 4-Port Switch

Quick Installation



Model No. **PSUS4**



## 1 Connecting the PrintServer

Before starting the physical installation, note the PrintServer's Default Name on the bottom of the PrintServer for future use.

- A** Plug one end of the Ethernet network cable into one of the PrintServer's LAN Ports (1-4). (See Figure A.)
- B** Connect the other end of the cable into your networked hub, switch, or router. The distance between the PrintServer and the other device should not exceed 328 feet (100 meters).
- C** Use the USB cable to connect your printer to the PrintServer's USB port. Plug the Type A connector end into the PrintServer (Figure D) and the Type B connector end into the printer.
- D** Power on your printer.
- E** Plug the power adapter cord into the PrintServer's Power port, which is located on the right side of the PrintServer. (See Figure F.)
- F** Plug the power adapter into an electrical outlet.

The PrintServer connection is complete. Go to Step 2.

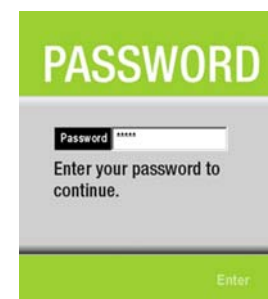
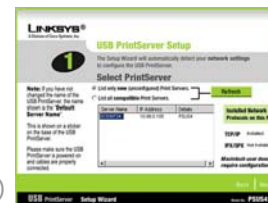


**IMPORTANT:** Make sure to use the power adapter that is supplied with the PrintServer. Use of a different power adapter could damage the PrintServer.



## 2 Configuring the PrintServer

- A** Insert the Setup CD-ROM into the computer's CD-ROM drive. The Setup CD-ROM should run automatically. If it does not, click the **Start** button and choose **Run**. In the box that appears, enter **D:\setupWizard.exe** (if "D" is the letter of your CD-ROM drive).
- B** When you see the Welcome screen, Figure B, click **Setup Wizard** to continue.
- C** The screen in Figure C will appear while the Setup Wizard is searching for the USB PrintServer.
- D** After the Setup Wizard has found the USB PrintServer, the screen in Figure D will appear. If this is the first time you have run the Setup Wizard, make sure that **List only new (unconfigured) Print Servers** is selected and your Print Server is listed by its default server name. If you have previously configured the Print Server, select **List all compatible Print Servers**. Click **Next** to continue.
- E** The Password screen, Figure E, will appear next. Enter the default password **admin** in the field. Click **Enter**.



- F** The Basic Settings screen, shown in Figure F, will appear. If you want to change the Device Name or Domain Name, enter the Device Name and Domain Name in the respective fields. Click **Next**.
- G** The IP Settings screen, Figure G, appears next. If your network uses a router with a DHCP Internet Protocol setting that automatically assigns an IP address, select **Automatically obtain an IP address (DHCP)**. If your network uses a static IP address, select **Set IP configuration manually**, and enter the IP Address, Subnet Mask, and Gateway in the fields provided. Click **Next**.
- H** The next screen that appears is the Set PrintServer's Password screen, shown in Figure H. If you want to change your password, enter your current password in the Current Password screen. Enter the new password in the New Password field, then enter it again in the Verify Password field. Click **Next**.



### 3 Windows Driver Installation

**I** The Confirmation screen appears next. See Figure I. Your old and new settings will be displayed. If you want to make a change, click **No**. If the settings are correct and you want to save the changes, click **Yes**.

**J** The Congratulations screen, shown in Figure J, will appear when the setup is complete.

**K** Click **User Install** at the bottom of the screen, and go to Step 3.B.

Configuration of your PrintServer is complete.



Linksys recommends that you set up your printer and install your printer's driver before you install the PrintServer's driver.

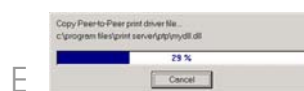
**A** If you haven't already done so, insert the Setup CD-ROM into the computer's CD-ROM drive. When the Setup Wizard's Welcome screen appears, click **User Install** to continue.

**B** When the Print Server Driver Welcome screen appears, click **Next**. See Figure B.

**C** When the next screen appears, Figure C, choose the location of where the driver's folder will be installed. If you want the folder to be installed in a different location, click the **Browse** button and select the location. To install the driver in the default location, click **Next** to continue.

**D** The next screen to appear is Select Program Folder, shown in Figure D. An icon will be added to the program folder listed. You may change the name for the program folder. Click **Next**.

**E** The next screen that may appear while the driver is being installed, is shown in Figure E.



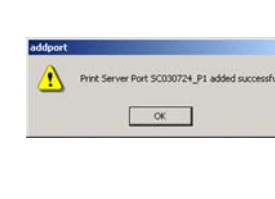
**F** When the driver is installed, the Setup Complete screen, Figure F, will appear. The Print Driver must still be configured, so make sure that **Configure Print Driver now** is selected. Click **Finish** to continue.

**G** The Information screen appears next. See Figure G. Read the information, then click **OK**.

**H** The Printer Port Setup screen will appear, as shown in Figure H, and list the PrintServer and the connected printers. Select a printer, then click **Next**.

If the PrintServer or printer isn't listed, make sure that the cable connections are good and that the PrintServer and printer are on.

**I** You will be informed that the PrintServer Port has been added successfully. (Figure I.) Click **OK**.



**J** The Configure Printer Port screen will appear, as shown in Figure J. Your installed printer will appear in the field. Click the **Connect** button to connect the printer for configuration. To add another printer, click the **Add New Printer** button.

The driver installation is complete.

Congratulations!  
The PrintServer Installation is complete.



**LINKSYS**  
A Division of Cisco Systems, Inc.

For additional information or troubleshooting help, refer to the User Guide on the Setup CD-ROM. You can also call or email for further support.

**24-hour Technical Support**  
800-326-7114  
(toll-free from US or Canada)

**E-mail Support**  
support@linksys.com

**Website**  
<http://www.linksys.com> or  
<http://support.linksys.com>

**RMA (Return Merchandise Authorization)**  
<http://www.linksys.com/support>

**FTP Site**  
<ftp://ftp.linksys.com>

**Sales Information**  
800-546-5797 (800-LINKSYS)

Linksys is a registered trademark or trademark of Cisco Systems, Inc. and/or its affiliates in the U.S. and certain other countries. Copyright © 2003 Cisco Systems, Inc. All rights reserved.