



Quick Installation

For Windows 98SE, Me, and 2000 ONLY

This Quick Installation is meant to help you install the product quickly and easily. For detailed instructions on installation, configuration, and further setup options, please consult the User Guide.

Instant Wireless® Series

WMP11

Wireless-B PCI Adapter



Package Contents

- Wireless-B PCI Adapter
- External Antenna
- Setup Wizard CD-ROM with User Guide
- Quick Installation and Registration Card



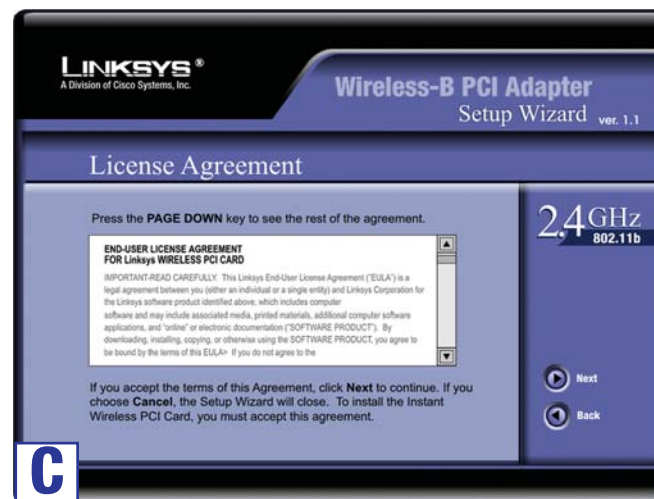
1 Driver Installation and Configuration for Windows 98SE, Me, and 2000

A. Insert the **Setup Wizard CD-ROM** into your CD-ROM drive. The Setup Wizard should run automatically, and Figure 5-1 should appear. If it does not, click the **Start** button and choose **Run**. In the field that appears, enter **D:\setup.exe** (where “D” is the letter of your CD-ROM drive).

B. To install the Adapter, click the **Install** button on the *Welcome* screen.

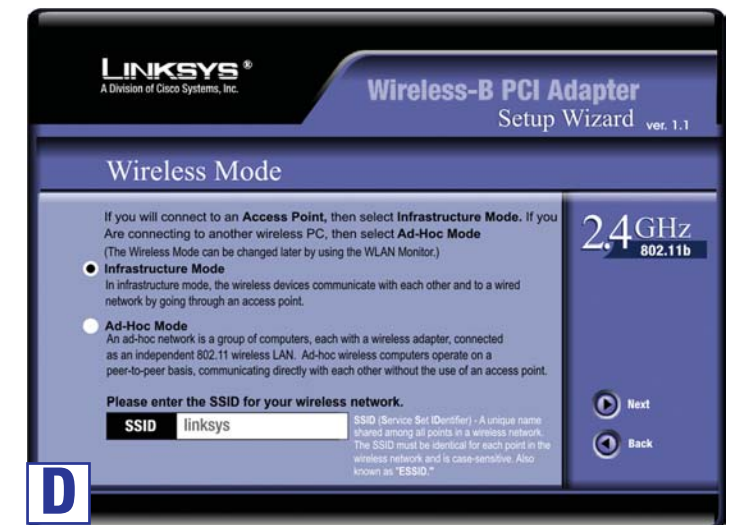


C. After reading the *License Agreement*, click the **Next** button.

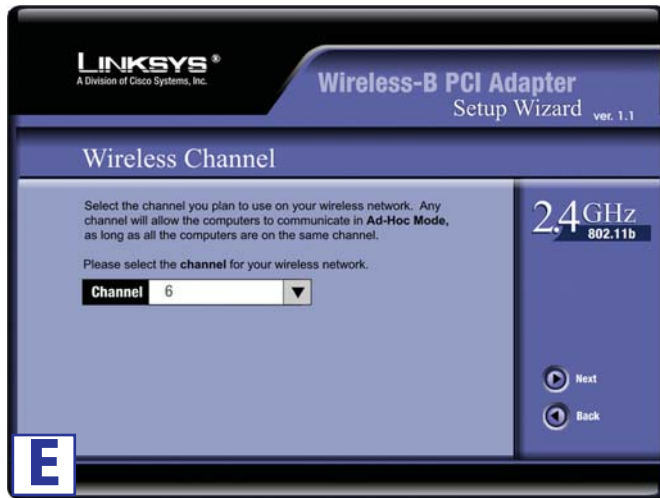


D. The Setup Wizard will ask you to choose a wireless mode. Click the **Infrastructure Mode** radio button if you want your wireless computers to network with computers on your wired network using a wireless access point. Click the **Ad-Hoc Mode** radio button if you want multiple wireless computers to network directly with each other. Do not use the Ad-Hoc mode if you want your wireless computers to communicate with computers on your wired network.

In the *SSID* field, enter the **SSID** of your wireless network. The SSID must be identical for all devices in the network. The default setting is **linksys** (all lowercase). Click the **Next** button.



E. If you chose **Infrastructure Mode**, go to **Step 5** now. If you chose **Ad-Hoc Mode**, select the correct operating channel for your network. The channel you choose should match the channel set on the other devices in your wireless network. Click the **Next** button.



E

F. The following screen will ask you to review your settings before it starts to copy files. Click the **Yes** button to save these settings, or click the **No** button to change any settings.



F

G. After the files have been successfully copied, the following screen will appear. Click the **Exit** button.



G

Windows 98SE, Me, and 2000 users: The driver installation and configuration for Wireless-B PCI Adapter is complete.

Proceed to Step 2.

2 Installing the PCI Adapter

- Remove any CDs or disks from their drives, and turn off your desktop PC.
- Open your PC's case, and locate an available PCI slot on the motherboard. Check with your computer manufacturer for instructions.
- Slide the Adapter into the PCI slot. Make sure that all of its pins are touching the slot's contacts. You may have to apply a bit of pressure to slide the Adapter all the way in.



C

D. After the Adapter is set firmly in place, secure its fastening tab to your PC's chassis with a mounting screw. Then close your PC's case.

E. Attach the external antenna to the Adapter's antenna port.

F. Power on your desktop PC.



E

**Windows 98SE, Me, and 2000 users:
The installation of the Wireless-B PCI Adapter is complete.**

For additional information or troubleshooting help, refer to the User Guide on the Setup CD-ROM. You can also call or email for further support.

24-hour Technical Support 800-326-7114 (toll-free from US or Canada)

E-mail Support

support@linksys.com

Website

http://www.linksys.com or

http://support.linksys.com

RMA (Return Merchandise

Authorization) http://www.linksys.com/support

FTP Site

ftp://ftp.linksys.com

Sales Information

800-546-5797 (800-LINKSYS)