

# Instant Ethernet® EtherPCI LAN Card II

Model No.: LNEPCI2

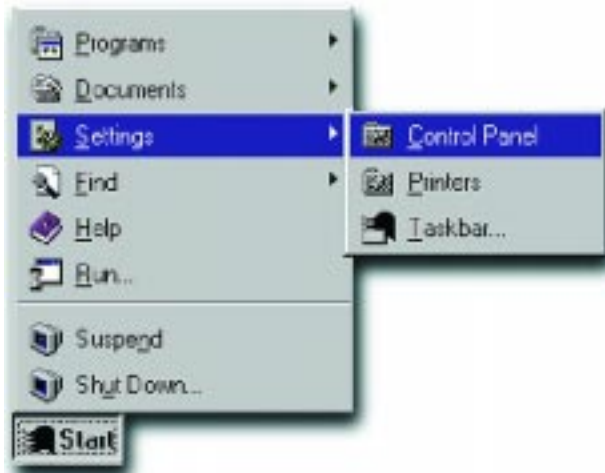
After physically installing the EtherPCI LAN Card in your computer, follow these instructions to install the network driver.

1. Start your computer and boot up Windows 2000.

Windows 2000 will automatically configure the EtherPCI LAN Card Driver for your PC using the built-in driver.

When the Windows Desktop is displayed, you can now check to make sure that the driver is properly installed.

2. Click on the **Start** button, then **Settings**, then **Control Panel**.



3. When you are in the **Control Panel**, double-click on the **System** icon.

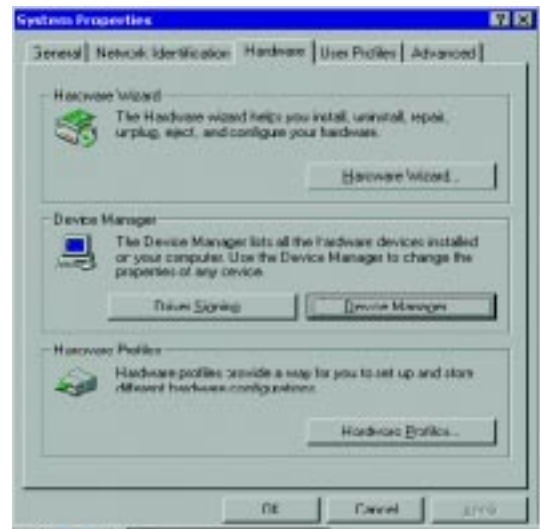


4. When the **System Properties** box is displayed, click on the **Hardware** tab.

## Quick Installation For Windows 2000

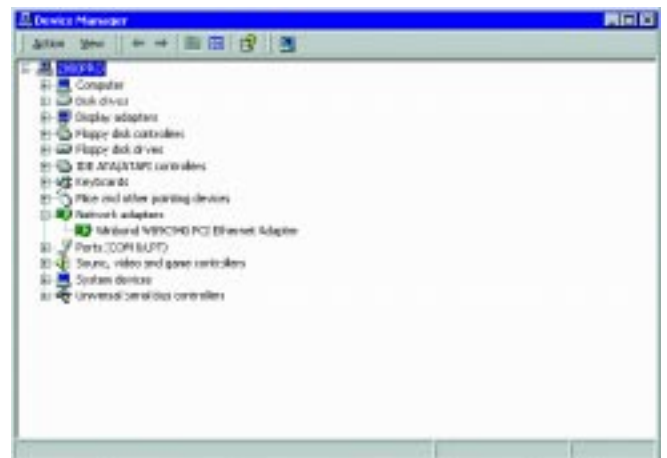
This sheet will guide you through the basic steps needed to install this Linksys product on your computer. If you have any problems during installation, visit our support page at [www.Linksys.com](http://www.Linksys.com).

5. In the **Hardware** tab, click on the **Device Manager** button.



6. In the **Device Manager** window, click the "+" next to the **Network Adapters** listing.

7. After you confirm that *Winbond W89C940 PCI Ethernet Adapter* is listed, close the window.



**Installation is complete.**

If you want to share files or printers,  
refer to the Windows 2000 documentation

