

QUICK INSTALLATION GUIDE

Compact Wireless-G USB Adapter

Model: WUSB54GC



Package Contents

- Compact Wireless-G USB Adapter
- Setup Wizard CD-ROM
- User Guide on CD-ROM
- Quick Installation Guide

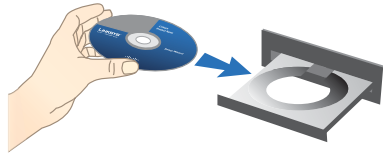
1 Installation

Run the Setup Wizard on the enclosed CD to install and set up the Adapter. Do not install the Adapter in your computer until instructed to do so by the Setup Wizard, or the Adapter will not install correctly.

- A.** Insert the Setup Wizard CD into your CD-ROM drive.



NOTE: Windows or other personal firewalls may ask for permission to run the software or program. You will need to allow the software to run in order to continue.



Insert the CD-ROM

- B.** The *Welcome* screen appears.

Select the appropriate language.

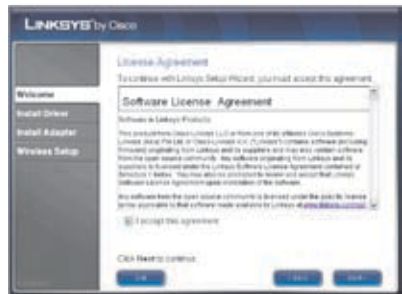
Click **Next**.



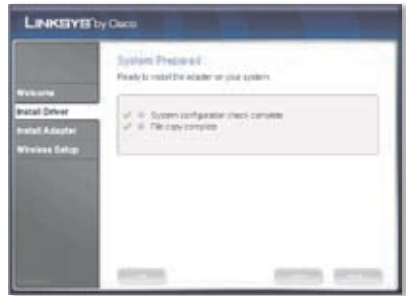
- C.** Read the License Agreement.

To accept the terms in the License Agreement, select **accept this agreement**.

Click **Next**.



- D. Please wait while the Setup Wizard installs the driver for the Adapter.



- E. Locate an available USB slot on your computer.

Insert the Adapter into the slot until it locks into place. (USB slots are keyed to fit one way; if the Adapter does not fit, turn it over.) Click **Next**.



- F. Please wait while the Setup Wizard installs the Adapter.

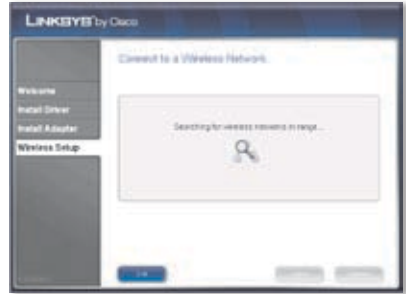
Multiple dialog boxes may appear. If necessary, click **Continue Anyway** or **Yes** to proceed with the installation.



- G. Please wait while the Setup Wizard installs the Linksys Wireless Manager utility.




H. Please wait while the Setup Wizard searches for wireless networks.



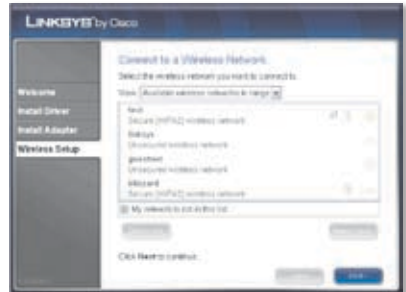
I. The available networks are listed in the table. Select your network, and then click **Connect**. Proceed to step L.



If your router supports Wi-Fi Protected Setup, double-click the **Wi-Fi Protected Setup** icon , and proceed to "2: Wi-Fi Protected Setup".

List of Wireless Networks

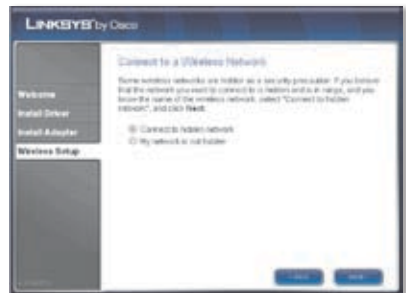
If your network is not listed, select **My network is not in this list**. Click **Next**.



Network Not Listed

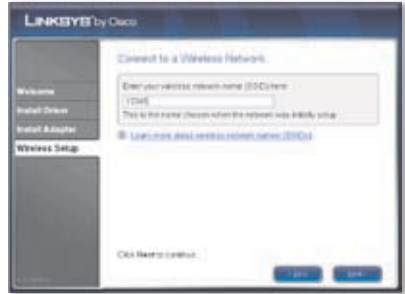
J. Select **Connect to hidden network**.

Click **Next**.



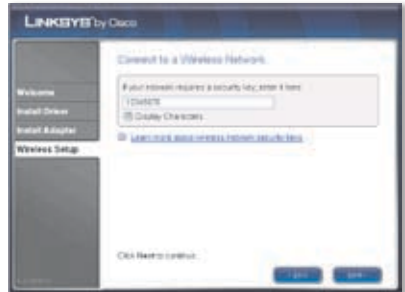
- K.** Enter the name of your wireless network.

Click **Next**.



- L.** If your network does not use wireless security, proceed to step M.

If your network uses wireless security, enter the security key of your wireless network. Click **Next**.



NOTE: If you are connecting to your own wireless network, you may want to configure wireless security on your router if you have not already done so.


- M.** Please wait while the Setup Wizard connects the Adapter to your wireless network.

Warnings from your firewall or security application may appear. If necessary, click **Always allow** or **Allow this time only** to allow the wireless connection.



- N.** The Adapter is connected to your wireless network. Click **Finish**.



- O. The settings of the Adapter have been saved to your desktop as Linksys Adapter.txt (a text file). Click **OK**.
- P. The Linksys Wireless Manager icon  appears on your desktop's system tray. Use this utility to change wireless settings or connect to a different wireless network. You can access the utility from the Start menu, or double-click the **Manager** icon in the system tray. Click **OK**.



Congratulations! Setup is complete.

2 Wi-Fi Protected Setup

Use Wi-Fi Protected Setup to create a wireless connection between the Adapter and your router.

- A. On your router, press the button that looks like one of the icons in the picture. You may have to hold down this button until an LED flashes.



Wi-Fi Protected Setup Button on Router

Within two minutes, click **Connect** on the *Quickly Connect Using Push Button* screen. Then proceed to step C.

If you do not want to use the push button method, click **Skip** on this screen, and proceed to step B.



- B. If your network uses wireless security, enter the security key of your wireless network. Click **Next**.

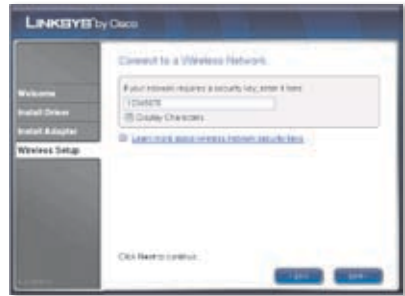
If your network does not use wireless security, proceed to step C.


- C. Please wait while the Setup Wizard connects the Adapter to your wireless network.

Warnings from your firewall or security application may appear. If necessary, click **Always allow** or **Allow this time only** to allow the wireless connection.

- D. The Adapter is connected to your wireless network. Click **Finish**.

- E. The settings of the Adapter have been saved to your desktop as Linksys Adapter.txt (a text file). Click **OK**.



- F. The Linksys Wireless Manager icon  appears on your desktop's system tray. Use this utility to change wireless settings or connect to a different wireless network. You can access the utility from the Start menu, or double-click the **Manager** icon in the system tray. Click **OK**.



Congratulations! Setup is complete.



Our packaging and documents are made from minimum 80% recycled content and printed with vegetable-based ink.

For additional information or troubleshooting help, refer to the User Guide on the CD-ROM. Additional support is also available by phone or online.

24-Hour Technical Support
800-326-7114

Website
<http://www.linksys.com>

Support
<http://www.linksys.com/support>

RMA (Return Merchandise Authorization)
<http://www.linksys.com/warranty>

FTP Site
<ftp://ftp.linksys.com>

Sales Information
800-546-5797 (800-LINKSYS)

Linksys, Cisco and the Cisco Logo are registered trademarks or trademarks of Cisco Systems, Inc. and/or its affiliates in the U.S. and certain other countries. Copyright © 2008 Cisco Systems, Inc. All rights reserved. Other brands and product names are trademarks or registered trademarks of their respective holders.

LINKSYS® by Cisco

