

LINKSYS® Quick Installation

This Quick Installation is meant to help you install the product quickly and easily. For detailed instructions on installation and configuration and further setup options, please consult the User Guide.

Instant Broadband™

Wireless PCI Card



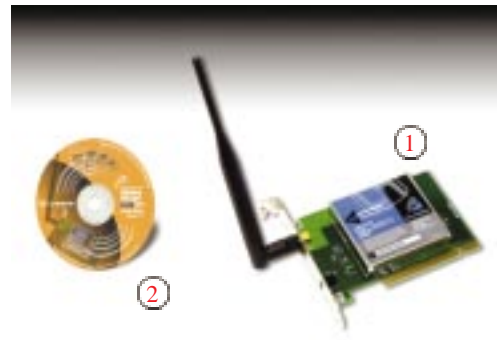
WMP11

System Requirements

- One free PCI slot
- Windows 95, 98, Millennium, NT, 2000, or XP
- 600 Kbytes of free disk space for utility and driver installation

Package Contents

- One Instant Wireless™ Wireless PCI Card (1)
- One Setup CD-ROM (Manual on CD) (2)
- Quick Installation Guide and Registration Card (not shown)



1 Installing the Wireless PCI Card Software

Note: You must install the software before you can install the Wireless PCI Card.

A. Insert the **Setup CD-ROM** into your CD-ROM drive. The Setup Utility should run automatically, and the following screen should appear. If it this screen does not appear automatically, click **Start**, and choose **Run**. In the box that appears, enter **D:\setup.exe** (where “D” is the letter of your CD-ROM drive).



Alternately, double-click **My Computer**, and then double-click the cd-rom drive where the Setup CD is located. Double-click the **Setup.exe** icon that appears.

B. Click on the **Install** tab.

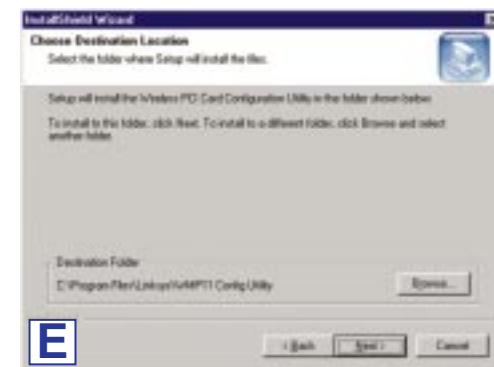
C. When the screen at right appears, click **Next** to continue.



D. The Warranty Policy will appear. Click **Yes** if you agree, or **No** to end the installation.



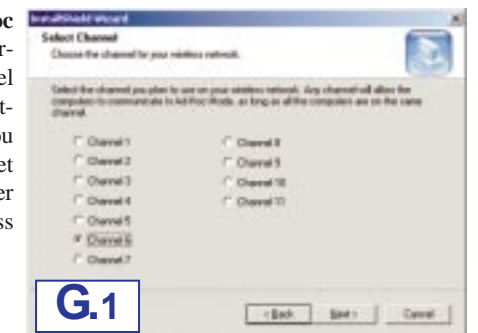
E. The InstallShield Wizard will automatically choose a folder where Setup will install files. Click **Next**.



F. The InstallShield Wizard will ask you to choose a wireless mode. Choose the mode that applies to your network. **Ad-Hoc Mode** is used for simple peer-to-peer networking or sharing of local resources between wireless networked PCs. **Infrastructure Mode** allows a wireless network to be integrated into an existing, wired network through an access point, permitting roaming between access points while maintaining a connection to all network resources. Select the radio button next to your choice, and then click **Next**.

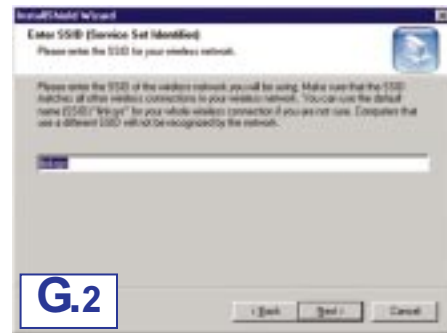


G.1. If you choose **Ad-Hoc Mode**, choose the correct operating channel that applies to your network. The channel you choose should be set the same as the other points in your wireless network. Click **Next**.

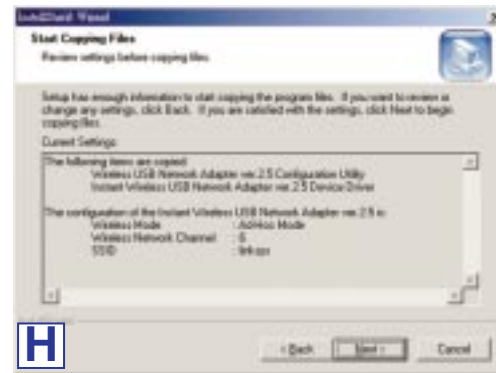


Continued on back

G.2. If you choose **Infrastructure Mode**, enter the name of the SSID for your Infrastructure setting. The SSID must be identical for all points in the network. To join any available SSID, type **ANY**. Click **Next**.

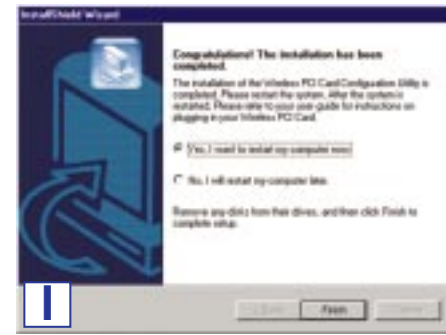


H. The next screen to appear will be the Review Settings screen. Verify that all the settings are correct, and click **Next** to continue.



Another screen will appear, indicating that all of the appropriate files are being copied onto your drive.

I. Once Windows has finished copying the necessary files, the following screen will appear. In order for the drivers to be installed properly, you must restart your computer. If you choose to do it now, select **Yes, I want to restart my computer now**. If you do not want to do it now, choose **No, I will restart my computer later**. Once you have made your choice, click **Finish**.



The software installation is complete. For setup information or any other questions, refer to the product's User Guide.

2 Installing Your Wireless PCI Card Into Your Desktop PC

Note: The Wireless PCI Card's antenna is vertically polarized. This means it has greater transmission and reception range in a circular area surrounding it, but a shorter range directly above and below. For maximum capability, the antenna should be oriented so it is perpendicular with the horizon.

A. Turn off your desktop PC.

B. Open your PC case, and locate an available PCI slot on the motherboard. Check with your computer manufacturer for instructions.

C. Slide the Wireless PCI Card into the PCI slot. Make sure that all of its pins are touching the slot's contacts. You may have to apply a bit of pressure to slide the card all the way in.



D. After the Wireless PCI Card is firmly in place, secure its fastening tab to your PC's chassis with a mounting screw. Then, close your PC.



E. Attach the external antenna to the Wireless PCI Card's antenna port. Orient the antenna so that it is perpendicular with the horizon.



F. Power on your desktop PC.

Installation of the Wireless PCI Card is complete. For setup information or any other questions, refer to the User Guide.