

QUICK INSTALLATION GUIDE

Dual-band Wireless-N Gigabit Router

Model: WRT320N

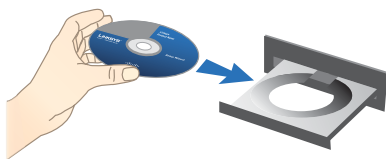


Package Contents

- Dual-band Wireless-N Gigabit Router
- Setup CD-ROM
- User Guide on CD-ROM
- Ethernet Network Cable
- Quick Installation
- Power Adapter

1 Installation

- A. Insert the Setup CD-ROM into your CD-ROM drive.



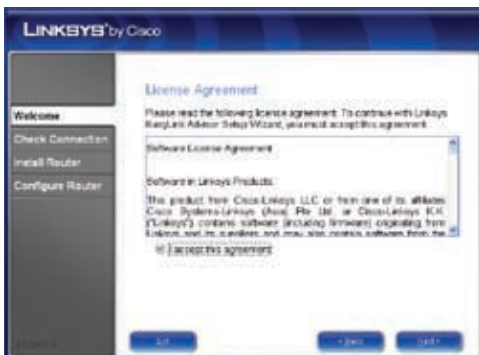
- B. To begin installation, click **Start Setup**.



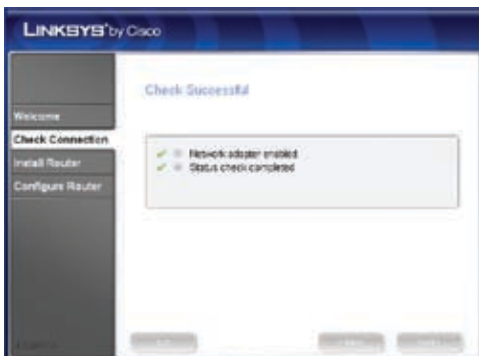
- C. On the *Welcome* screen, click **Next**.



D. Select **I accept this agreement**. Click **Next**.



E. The Setup Wizard checks your connection. Click **Next**.



- F. The Setup Wizard displays a series of screens that walk you through the Router's physical installation. Follow the instructions in these screens.





- G. Wait until the Setup Wizard configures the Router. When the *Configuration Complete* screen appears, click **Next**.



- H. Follow the instructions in the remaining screens until you see the *Network Configured* screen. Click **Next** to close the Setup Wizard.



Congratulations! Setup is complete.



NOTE: For more advanced settings and security options, refer to the User Guide on the CD-ROM.



Our packaging and documents are made from minimum 80% recycled content and printed with vegetable-based ink.

For additional information or troubleshooting help, refer to the User Guide on the CD-ROM. Additional support is also available by phone or online.

24-Hour Technical Support
800-326-7114

Website
<http://www.linksys.com>

Support
<http://www.linksys.com/support>

RMA (Return Merchandise Authorization)
<http://www.linksys.com/warranty>

FTP Site
<ftp://ftp.linksys.com>

Sales Information
800-546-5797 (800-LINKSYS)

Linksys, Cisco and the Cisco Logo are registered trademarks or trademarks of Cisco Systems, Inc. and/or its affiliates in the U.S. and certain other countries. Copyright © 2008 Cisco Systems, Inc. All rights reserved. Other brands and product names are trademarks or registered trademarks of their respective holders.

LINKSYS[®] by Cisco

