

QUICK INSTALLATION GUIDE

Wireless-G Broadband Router with SpeedBooster

Model: WRT54GS2

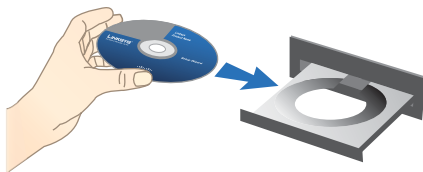


Package Contents

- Wireless-G Broadband Router with SpeedBooster
- Setup Software and User Guide on CD
- Network Cable
- Power Adapter
- Quick Installation Guide

Installation

- A. Insert the Setup CD-ROM into your CD-ROM drive.




- B. If you use a PC, select your language from the drop-down menu. Click **Start Setup**.

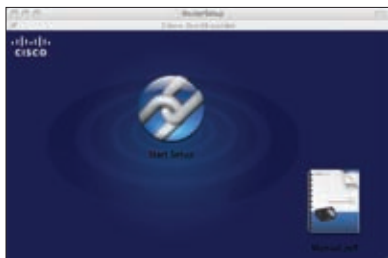
If you use a Mac, skip to step D.



- C. The Setup Wizard will guide you through the steps to set up the Router. It will also install Cisco Network Magic software to help you configure and manage your network. Click **Next** and skip to step F.



- D. Double-click the CD on your desktop. Then double-click the **Start Setup** icon .



- E. Select your language from the drop-down menu. Click **Next**.



- F. Select **I accept this agreement**. Click **Next**.



- G. The Setup Wizard will guide you through the Router's physical installation and setup. Follow the instructions in these screens.



- H. Follow the instructions until you see the *Network Configured* screen. Click **Learn about connecting other computers to this network** to view sharing options, or click **Next** to finish the setup.



Congratulations! Setup is complete.

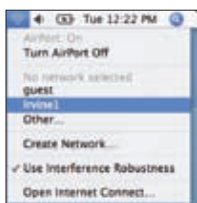
Wireless Connection to Your PC

The Setup Wizard will guide you through the steps to install Cisco Network Magic on your computer. When the *Network Tasks* screen appears, click **Go Wireless**, and Cisco Network Magic will help you create a wireless connection between the Router and your computer. Then follow the on-screen instructions.



Wireless Connection to Your Mac

1. Click the **Wireless**  icon on your desktop.
2. Select your wireless network.



3. If security is enabled, you will be prompted for a password. (The password, also known as a network security key, was saved in the Linksys.txt file on your desktop. Double-click the file to open it.)



Enter the password, and then click **OK**.



Our packaging and documents are made from minimum 80% recycled content and printed with vegetable-based ink.

For additional information or troubleshooting help, refer to the User Guide on the CD-ROM. Additional support is also available by phone or online.

Website

<http://www.linksysbycisco.com>

24-Hour Technical Support

800-326-7114

Support

<http://www.linksysbycisco.com/support>

Sales Information

800-546-5797 (800-LINKSYS)

Linksys, Cisco and the Cisco Logo are registered trademarks or trademarks of Cisco Systems, Inc. and/or its affiliates in the U.S. and certain other countries. Other brands and product names are trademarks or registered trademarks of their respective holders. Copyright © 2009 Cisco Systems, Inc. All rights reserved.

LINKSYS® by Cisco

