





**Package Contents**

- Wireless-G Internet Video Camera
- Camera Desktop Stand
- Detachable Antenna
- Power Adapter
- Ethernet Network Cable
- Setup CD-ROM with User Guide
- User Guide on CD
- Quick Installation Guides
- SoloLink DDNS Free Trial Card
- Registration Card

# 2.4GHz 802.11g Wireless-G Internet Video Camera Quick Installation

## 1 Connect the Camera to a Wired Network for Setup

**NOTE:** If you want to connect the Camera to a wireless network for setup, refer to the User Guide on the Setup CD-ROM for instructions.

- A** Attach the antenna.
- B** Connect the included Ethernet network cable to your router, switch, or computer.
- C** Connect the other end of the cable to the Ethernet port on the Camera.

**IMPORTANT:** You **MUST** connect the Camera to a router, switch, or PC using an Ethernet network cable **BEFORE** powering on the Camera. Otherwise, the Camera will not function.

- D** Connect the included power adapter to the Power port on the Camera.
- E** Plug the power adapter into an electrical outlet.

The Ready LED flashes while the Camera is initializing. When the Camera is ready for setup, the Ready and Ethernet LEDs are solidly lit.



C



D

## 2 Set up the Video Camera

**A** Insert the Setup CD-ROM into your CD-ROM drive. The Setup Wizard should run automatically, and the *Welcome* screen should appear. If it does not, click **Start** and then **Run**. In the field provided, enter **D:\wvc54g.exe** (if "D" is the letter of your CD-ROM drive).

**B** Click **Setup** to begin the setup process.

**C** Make sure the Camera is properly connected to your network. Click **Next**.

**D** The screen will display a list of Wireless-G Internet Video Cameras on your network and status information. In the *Selection* box, click the name of the Camera you are currently installing. Click **Next**.

**E** A *verify password* screen will appear. In lowercase letters, enter **admin** in the *Administrator Name* and *Password* fields. Click **OK**.



A



B



C



D

**F** Enter a unique name for the Camera in the *Camera Name* field, and complete the *Description* field. Select your time zone, and enter the date and time. Then click **Next**.

**G** If your network has a router or other DHCP server, select **Automatic Configuration-DHCP**. If the Camera requires a static IP address, keep the default setting, **Static IP address**.

Click **Next**.

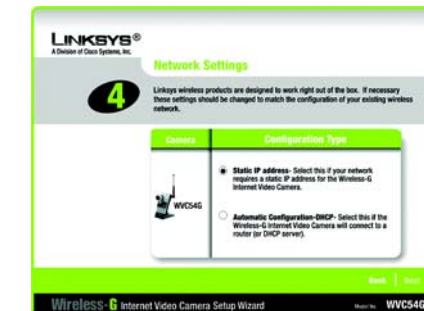
**H** If you selected Automatic Configuration-DHCP in step G, then proceed to step I.

If you selected Static IP address, the *IP Settings* screen will appear. Enter an IP Address, Subnet Mask, and Default Gateway appropriate for your network. You must specify an IP Address and Subnet Mask. If you are unsure about the Default Gateway, then leave this field blank. Complete the *Primary DNS* and/or *Secondary DNS* fields. Enter at least one DNS address, which you can obtain from your ISP. Click **Next**.

**NOTE:** The default IP address of the Camera is 192.168.1.115.



F



G



H

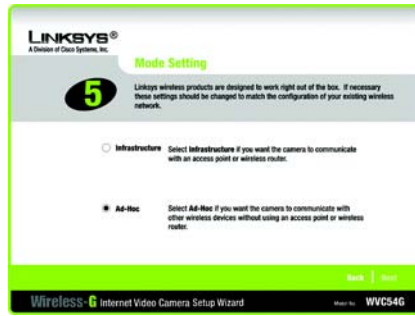
Click the **Infrastructure** radio button if you want the Camera to communicate using an access point or wireless router. Click the **Ad-Hoc** radio button if you want the Camera to communicate without using an access point or wireless router. Click **Next**.

Enter your wireless network's SSID or network name. If you chose Ad-Hoc mode, select the channel at which the network broadcasts its wireless signal. Then click **Next**.

The *Security Settings* screen will appear. If your network has WEP encryption enabled, then select the level of WEP encryption and enter a Passphrase. If you do not have a Passphrase and want to manually enter a WEP key, leave the *Passphrase* field blank and complete the *Key 1* field.

If your network has WEP encryption disabled, keep the default, **Disabled**.

Then click **Next**.

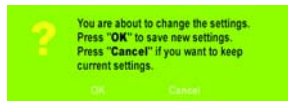


Review your settings before the Setup Wizard starts to copy your files. Click **Next**.

Click the **OK** button to confirm that you want to save the new settings.

After the files have been successfully copied, the *Congratulations* screen will appear.

Click the **Install Viewer & Recorder Utility** button to install the Camera's Utility on your PC. This Utility provides a convenient way to view and record the Camera's video.



## 3 Install the Viewer & Recorder Utility

After you clicked the Install Viewer & Recorder Utility button, the *Welcome* screen will appear. Click **Next**.

To install the Utility files in the default folder, click **Next**. To select a different folder, click **Browse** and follow the on-screen directions.

To add program icons to the default folder, click **Next**. To add program icons to an existing folder, select one from the Existing Folders listed, and then click **Next**.

When the ActiveX plug-in has been installed, you will see the screen shown in Figure D. Then click **OK**.

When the setup is complete, click **OK**.

To open the Utility, double-click its shortcut on your desktop.

**NOTE:** On the *Congratulations* screen of the Setup Wizard, you can click the **Setup SoloLink DDNS Service** button to take advantage of the Camera's Dynamic Domain Name System (DDNS) feature. This is useful for remote access of the Camera via the Internet. Refer to the SoloLink™ Quick Installation for more information.

## 4 Connect the Video Camera for Wireless Network Use

Unplug the power adapter from the electrical outlet.

Unplug the Ethernet network cable from the Camera as well as the PC, router, or switch.

Place the Camera in the location you want.

Plug the power adapter into a local electrical outlet.

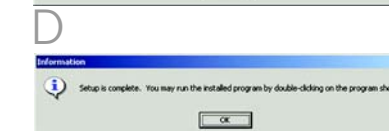
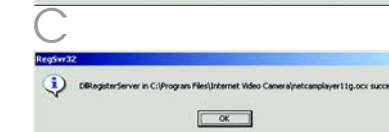
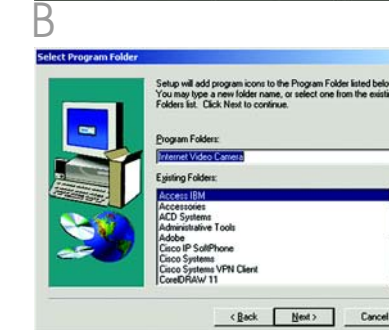
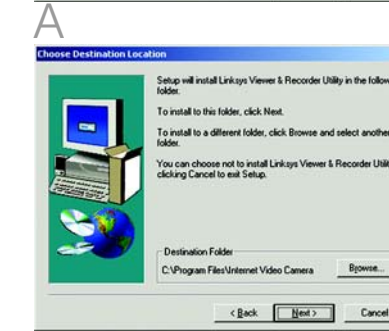
The Ready LED flashes while the Camera is initializing. When the Ready and Wireless LEDs are solidly lit, the Camera is ready for use.

Aim and focus the Camera accordingly.

**Congratulations! The installation of the Wireless-G Internet Video Camera is complete.**

To view the Camera's video, open your web browser, and enter the Camera's IP address. (Use Internet Explorer version 5.5 or higher. Netscape users should use the Viewer & Recorder Utility.)

**NOTE:** To use the Viewer & Recorder Utility, double-click its icon. Click **Find** to search for the Camera. Click **Add** to add the Camera to the Utility's list. Then click **View**.



**LINKSYS**  
A Division of Cisco Systems, Inc.

For additional information or troubleshooting help, refer to the User Guide on the Setup CD-ROM. You can also call or e-mail for further support.

**24-hour Technical Support**  
800-326-7114  
(toll-free from US or Canada)

**E-mail Support**  
support@linksys.com

**Website**  
http://www.linksys.com or  
http://support.linksys.com

**RMA (Return Merchandise Authorization)**  
http://www.linksys.com/support

**FTP Site**  
ftp://ftp.linksys.com

**Sales Information**  
800-546-5797 (800-LINKSYS)

Linksys is a registered trademark or trademark and SoloLink is a trademark of Cisco Systems, Inc. and/or its affiliates in the U.S. and certain other countries. Copyright © 2004 Cisco Systems, Inc. All rights reserved.