

LINKSYS® Quick Installation

This Quick Installation is meant to help you install the product quickly and easily. For detailed instructions on installation and configuration, and further setup options, please consult the User Guide.

Instant Broadband™ EtherFast® Cable/DSL Wireless-Ready Router with 4-Port Switch



BEFSR41W

- System Requirements**
- Microsoft® Windows 95, 98, NT, 2000, ME, or XP
 - An Operating Ethernet Adapter and a Network Cable (for initial setup)
 - One CD-ROM (to use TechHelper)
 - One External Cable/DSL Modem
 - Network Adapter with TCP/IP per PC
 - Internet Explorer 4.0 (Minimum) or higher (5.0 Recommended), or Netscape Navigator 4.0 (Minimum) or higher (4.7 Recommended)
 - WPC11 for Wireless Connection (sold separately)

- Package Contents**
- One Linksys EtherFast® Cable/DSL Wireless-Ready Router with 4-Port Switch (1)
 - One AC Power Adapter (2)
 - One TechHelper CD-ROM (3)
 - One User Guide (4)
 - Registration Card and this Quick Installation (not shown)



1 Installing Your EtherFast® Cable/DSL Wireless-Ready Router onto Your Network

You will need the following values from your ISP in order to install the EtherFast® Cable/DSL Wireless-Ready Router (where applicable):

- PPPoE with username and password (for some DSL users)
- Your broadband-configured PC's fixed Internet IP Address
- Your broadband-configured PC's Computer and Workgroup Names
- Your ISP's Subnet Mask
- Your ISP's Default Gateway
- Your ISP's DNS IP address

Whoever installed your broadband access should have left this information with you. If not, your ISP will be able to supply you with the correct settings.

For more detailed instructions, please refer to the EtherFast® Cable/DSL Wireless-Ready Router's User Guide.

- Power everything down (including your PCs, cable or DSL modem, and the Router).
- Connect a network cable from an Ethernet port on one of your PCs to one of the four LAN Ports on the back of the Router. Do the same with all the PCs you wish to connect to the Router.
- Connect the network cable from your broadband modem to the WAN port on the rear of the Router.



NOTE: Only use the power adapter packaged with the Router. Using a different power adapter may damage the Router.

- Connect the power-supply cable to the Power port on the rear of the Router. Then plug the power-supply transformer into an appropriate power outlet.
- The **Power LED** will illuminate green as soon as the power adapter is connected.
- The **Diag LED** will illuminate red for a few seconds while the Router goes through its internal diagnostic test. It will turn off when the self-test is complete.



- Press the **Reset** button on the rear of the Router. Hold the button in for three seconds, or until the Diag LED illuminates red. This resets the Router.

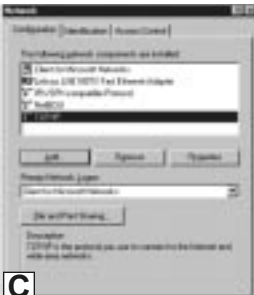


2 Configuring Your EtherFast® Cable/DSL Wireless-Ready Router

- Power on one of your PCs and log in if you are asked to. When you reach the desktop click **Start**, select **Settings**, and then select **Control Panel**.
- Double-click the **Network** icon.

Note: Steps A through E will only work in Windows 95, 98 and ME. If you are using Windows NT, 2000, or XP, please check your Windows NT, 2000, or XP documentation to configure your TCP/IP protocol.

- In the **Configuration** window, highlight the **TCP/IP** that has been associated with your network card or adapter. (Do **NOT** configure **TCP/IP->Dial-up Adapter**.) Click **Properties**. If the TCP/IP Protocol isn't listed in the Configuration window, go to "Installing the TCP/IP Protocol" in the Appendix of the User Guide.



- Click the **IP Address** tab. Select **Obtain an IP address automatically**. Click **OK**.



Continued on back! →

E. Click **OK** again. Windows may begin copying files to your computer, and then will ask you to restart your PC. Click **Yes** to restart your computer and initiate the new settings. If you aren't asked, manually restart the computer.

F. Open your PC's web browser and type **http://192.168.1.1** in the browser's Address field. Press **Enter**.



G. A username and password prompt will appear. Leave the User Name box empty and type **admin** (the default password) in the Password box. Click **OK**.

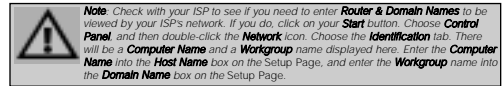


H. Configure the following values on the *Cable/DSL Wireless-Ready Router's Setup page*. You can get these values from your ISP. (Not everyone will require the following settings. Check with your ISP.)



LAN IP Address: These values refer to the internal network you are creating with your Cable/DSL Wireless-Ready Router. Unless you have specific internal needs, there should be no reason to change these values.

WAN IP Address: These values refer to the outside network you connect to every time you access your Broadband Internet connection. Most Broadband ISPs assign their clients a different IP address each time they log on. If this is the case with your ISP, click **Obtain an IP Address Automatically** and continue to step I. If your PC has been assigned a fixed IP address by your ISP, click **Specify an IP Address**, and then enter the address into the **Subnet Mask, Default Gateway Address, and DNS** fields. If you are using **PPPoE**, enter a **User Name** and **Password**.



I. When you have properly configured the Setup page, click **Apply**. Then click **Continue**.

J. Choose the **DHCP** tab.



K. Unless you already have a DHCP server on your internal network, choose **Enable** from the *DHCP Server* field.

L. In the *Number of DHCP Users* field, enter the **number of PCs** you plan on networking to the Cable/DSL Wireless-Ready Router. Click **Apply**.

M. Click the **Continue** button, then close your web browser. Restart your computer to apply the new settings.

N. **Before your PC reboots**, power down your broadband modem for three seconds. Then power it back on.

O. **After your PC reboots**, open your web browser to test your Internet connection.

P. Repeat steps A through E as necessary for each PC on your network.

Once you have configured all of the PCs on your network, the *Cable/DSL Wireless-Ready Router Setup and Installation* is complete.

For additional setup information or any other questions, refer to the *User Guide*.