

LINKSYS® Quick Installation

This Quick Installation is meant to help you install the Instant USB Disk quickly and easily. For additional information, visit the Linksys website at www.linksys.com.

Instant USB Disk™



USBM32M



USBM64M



USBM128M

Package Contents

- Linksys Instant USB Disk 32MB (1)
or
Instant USB Disk 64MB (1)
or
Instant USB Disk 128MB (1)
- One USB Extension Cable (2)
- One USB Driver CD-ROM (for Windows 98SE setup) (3)
- One Neck Strap (not shown)
- Quick Installation and Registration Card (not shown)



Minimum Requirements

- Windows 98SE, 2000, Me, or XP
or
Mac OS 9.0 or Higher
or
Linux 2.4.0 or Higher
- CD-ROM Drive (for Win 98SE setup)
- Available USB Port

Note: If you are installing the Instant USB Disk in a tight space, use the USB Extension Cable.

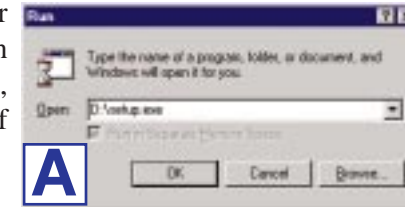
Installation Process

Proceed to the section for the operating system you are using on your PC.

1 Install the Instant USB Disk

Windows 98SE

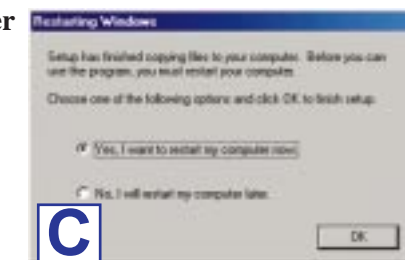
A. Insert the USB Driver CD-ROM into your PC's CD-ROM drive. Click the **Start** button and choose **Run**. In the box that appears, enter **D:\setup.exe** (where "D" is the letter of your CD-ROM drive).



B. Click **Next**.



C. Click **Yes, I want to restart my computer now**. Then click **OK**.



D. Insert the **Instant USB Disk** into the USB port of your computer.

E. Windows 98SE will automatically install the USB driver.

A new drive icon named *Removable Disk* will appear in the *My Computer* window.

D



Your installation is complete. If you have additional questions, visit the Linksys website at www.linksys.com.

Windows 2000, Me, or XP

A. Insert the **Instant USB Disk** into the USB port of your computer.

B. Windows will automatically install the USB driver.

A new drive icon named *Removable Disk* will appear in the *My Computer* window.

A



Your installation is complete. If you have additional questions, visit the Linksys website at www.linksys.com.

IMPORTANT NOTE

Warning: To properly eject the Instant USB Disk, follow these two steps:

- 1) Make sure the LED on the Instant USB Disk has stopped flashing.
- 2) Always perform the proper Windows operation to eject the Instant USB Disk.

If you unplug the Instant USB Disk without first following these two instructions, then your PC could crash and lose valuable data.

QI-USBM32M_USB64M_USB128M-042602A_JL

WWW.LINKSYS.COM