

LINKSYS® Quick Installation For Windows XP ONLY

This Quick Installation is meant to help you install the product quickly and easily. For detailed instructions on installation and configuration and further setup options, please consult the User Guide.

Instant Wireless™ Series

WMP11

Wireless PCI Card



System Requirements

- One Windows XP PC with:
- a Pentium Class 200MHz or Faster Processor
 - 64MB RAM
 - one Free PCI Slot
 - one CD-ROM drive

Package Contents

- One Wireless PCI Card (1)
- One Setup CD-ROM with User Guide included (2)
- Quick Installation Guide and Registration Card (not shown)



1 Installing the Wireless PCI Card Into Your Desktop PC

- A. Turn off your desktop PC.
- B. Open your PC's case, and locate an available PCI slot on the motherboard. Check with your computer's manufacturer for instructions.
- C. Slide the Wireless PCI Card into the PCI slot. Make sure that all of its pins are touching the slot's contacts. You may have to apply a bit of pressure to slide the card all the way in.



C

- D. After the Wireless PCI Card is firmly in place, secure its fastening tab to your PC's chassis with a mounting screw. Then, close your PC's case.



D



Note: The Wireless PCI Card's antenna is vertically polarized. This means it has greater transmission and reception range in a circular area surrounding it, but a shorter range directly above and below. For maximum capability, the antenna should be oriented so it is perpendicular with the horizon.

- E. Attach the external antenna to the Wireless PCI Card's antenna port. Orient the antenna so that it is perpendicular with the horizon.



E

- F. Power on your desktop PC.

Installation of the Wireless PCI Card is complete. Proceed to Step 2 for installation of the driver.

2 Installing the Wireless PCI Card's Driver



Important: Do NOT automatically run the Wireless PCI Card's Setup Wizard. If the Setup Wizard runs automatically after the Setup Wizard CD has been inserted, click the **Exit** tab.

- A. Install the PCI Card and start your Windows XP PC.
- B. The *Found New Hardware Wizard* box will appear. If it does not, bring up the System Properties window. One way to do this is to press the Windows and Pause/Break keys simultaneously. Then, click the **Hardware** tab. Click the **Device Manager**. Under "Other Devices", double-click the **Network Controller** and click **Reinstall Driver**.
- C. Select **Install from a list or specific location (Advanced)** and click **Next**.

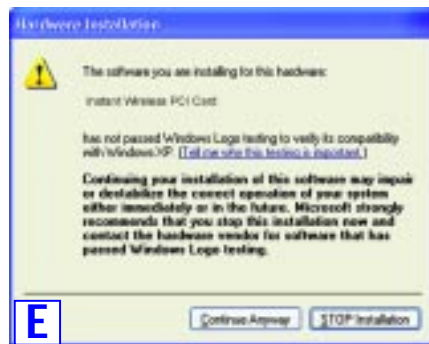


C

- D. When the *Please Choose Your Search and Installation Options* dialog box appears, select **Search for the best driver in these locations** and deselect **Search removable media (floppy, CD-ROM...)** (note: if you do not deselect this option, Windows may find multiple drivers). Select **Include this location in the search:**. Enter **D:\winxp** in the field and click **Next**.

Continued on back


E. When the *Hardware Installation* box appears, click **Continue Anyway**.



F. When the *Completing the Found New Hardware Wizard* dialog box appears, click **Finish**. If asked to upgrade firmware, click **OK**. If an error message appears, this means the firmware does not require upgrading and you can click **OK** again to continue.



G. The Installation is complete. Windows XP automatically detects and configures the Wireless PCI Card for your wireless network. To adjust these settings, refer to your Windows XP documentation.

 **Note:** To change the settings of your Wireless PCI Card, run the XP Zero configuration utility as shown in Step 3.

3 Configuring the Wireless PCI Card using the Zero Configuration Utility

A. After installing the Wireless PCI Card, the Windows XP Wireless Zero Configuration icon will appear on your system tray. Double-click the icon of the two monitors.




B. The screen that will appear shows any available wireless network. Select a **Network** from the list of Available networks, then click the **Connect** button.



C. If your wireless network has enabled WEP encryption, you will see the following screen. Enter the **Network key**, which is the WEP key, and click the **Connect** button.




In order to find out the WEP encryption set by other wireless products in your network, such as an access point, please check the manufacturer's user guide for more information on WEP encryption configuration.

 **Note:** Windows XP does not support the use of a WEP passphrase. Enter the exact key used on your access point.

D. The Zero Configuration icon will show the network status, as shown below, when your configuration is successful.



 **Note:** For more information about WEP, refer to the User Guide or the Linksys KnowledgeBase at www.linksys.com.
For further information on Wireless Networking with Windows XP, search the Windows XP Search Engine using the keyword: "wireless."