

LINKSYS®

A Division of Cisco Systems, Inc.



2,4GHz
802.11b

Wireless-B

USB Network Adapter User Guide

WIRELESS

Model No. **WUSB11 (UK/EU/LA)**

CISCO SYSTEMS



Copyright and Trademarks

Specifications are subject to change without notice. Linksys is a registered trademark or trademark of Cisco Systems, Inc. and/or its affiliates in the U.S. and certain other countries. Copyright © 2004 Cisco Systems, Inc. All rights reserved. Other brands and product names are trademarks or registered trademarks of their respective holders.

WARNING: This product contains chemicals, including lead, known to the State of California to cause cancer, and birth defects or other reproductive harm. ***Wash hands after handling.***

How to Use this Guide

Your guide to the USB Network Adapter has been designed to make understanding networking with the USB Network Adapter easier than ever. Look for the following items when reading this User Guide:



This checkmark means there is a note of interest and is something you should pay special attention to while using the USB Network Adapter.



This exclamation point means there is a caution or warning and is something that could damage your property or the USB Network Adapter.



This question mark provides you with a reminder about something you might need to do while using the USB Network Adapter.

In addition to these symbols, there are definitions for technical terms that are presented like this:

word: definition.

Also, each figure (diagram, screenshot, or other image) is provided with a figure number and description, like this:

Figure 0-1: Sample Figure Description

Figure numbers and descriptions can also be found in the “List of Figures” section.

Chapter 1: Introduction	1
Welcome	1
What's in this Guide?	2
Chapter 2: Planning Your Wireless Network	4
Network Topology	4
Roaming	4
Network Layout	5
Chapter 3: Getting to Know the USB Network Adapter	6
The USB Port	6
The LED Indicators	6
Chapter 4: Software Installation and Configuration for Windows 98SE, Me, and 2000	7
The Installation Procedure	8
Chapter 5: Hardware Installation	11
Connecting the Adapter	11
Using the Adapter's Wall Mount	13
Chapter 6: Driver Installation and Configuration for Windows XP	14
Windows XP Wireless Zero Configuration	16
Chapter 7: Using the Wireless Network Monitor for Windows 98SE, Me, and 2000	18
Accessing the Wireless Network Monitor	18
Link Information	18
Site Survey	21
Profiles	22
Creating a New Profile	24
Appendix A: Troubleshooting	28
Common Problems and Solutions	28
Frequently Asked Questions	29
Appendix B: Wireless Security	32
Security Precautions	32
Security Threats Facing Wireless Networks	32
Appendix C: Windows Help	35
Appendix D: Glossary	36
Appendix E: Specifications	42
Appendix F: Warranty Information	43

Appendix G: Regulatory Information	44
Appendix H: Contact Information	50

List of Figures

Figure 3-1: USB Port	6
Figure 3-2: Front Panel	6
Figure 4-1: The Setup Wizard's Welcome Screen	7
Figure 4-2: The Setup Wizard's License Agreement	8
Figure 4-3: The Setup Wizard's Wireless Mode Screen	8
Figure 4-4: The Setup Wizard's Ad-Hoc Mode Setting Screen	9
Figure 4-5: The Setup Wizard's Wireless Security - WEP Screen	9
Figure 4-6: The Setup Wizard's Finalize Settings Screen	10
Figure 4-7: Digital Signature Not Found Screen	10
Figure 4-8: The Setup Wizard's Congratulations Screen	10
Figure 5-1: How the Adapter Connects to Your PC	11
Figure 5-2: The Adapter's USB Port	11
Figure 5-3: A PC's USB port	11
Figure 5-4: The Adapter's LEDs	12
Figure 5-5: Digital Signature Not Found Screen	12
Figure 5-6: Positioning the Adapter's Antenna	12
Figure 5-7: Using the Wall Mount - Step A	13
Figure 5-8: Using the Wall Mount - Step B	13
Figure 5-9: Using the Wall Mount - Step C	13
Figure 6-1: Windows XP - Welcome to the Found New Hardware Wizard	14
Figure 6-2: Windows XP - Hardware Installation	14
Figure 6-1: Windows XP - Completing the Found New Hardware Wizard	15
Figure 6-3: The Zero Configuration Icon	16
Figure 6-4: Windows XP Zero Configuration Connection without WEP	16
Figure 6-5: Windows XP Zero Configuration Connection with WEP	17
Figure 6-6: Windows XP Zero Configuration - Active Wireless Connection	17
Figure 7-1: Wireless Network Monitor Icon	18
Figure 7-2: Link Information	18
Figure 7-3: Wireless Network Status	19
Figure 7-4: Wireless Network Statistics	20

Figure 7-5: Site Survey	21
Figure 7-6: WEP Encryption	21
Figure 7-7: Profiles	22
Figure 7-8: Importing a Profile	23
Figure 7-9: Exporting a Profile	23
Figure 7-10: Creating a New Profile	24
Figure 7-11: Enter Profile Name	24
Figure 7-12: Network Settings for New Profile	25
Figure 7-13: Wireless Mode for New Profile	25
Figure 7-14: Ad-Hoc Mode Setting for New Profile	26
Figure 7-15: Wireless Security - WEP for New Profile	26
Figure 7-16: Confirm New Settings for New Profile	27
Figure 7-17: Congratulations for New Profile	27

Chapter 1: Introduction

Welcome

Thank you for choosing the Wireless-B USB Network Adapter. With this Adapter, your wireless networking experience will be faster and easier than ever.

How does the Adapter do this? Like all wireless products, the Adapter allows for greater range and mobility within your wireless network. Connecting to your PC via the USB port means that this Adapter leaves the PC's slots open for other purposes. This Adapter communicates over the 802.11b wireless standard, one of the most popular wireless standards, to communicate with your network.

But what does all of this mean?

Networks are useful tools for sharing computer resources. You can access one printer from different computers and access data located on another computer's hard drive. Networks are even used for playing multiplayer video games. So, networks are not only useful in homes and offices, they can also be fun.

PCs equipped with wireless cards and adapters can communicate without cumbersome cables. By sharing the same wireless settings, within their transmission radius, they form a wireless network.

Use the instructions in this Guide to help you install and use the Wireless-B USB Network Adapter. These instructions should be all you need to get the most out of the Adapter.

network: a series of computers or devices connected for the purpose of data sharing, storage, and/or transmission between users.

adapter: a device that adds network functionality to your PC.

802.11b: an IEEE wireless networking standard that specifies a maximum data transfer rate of 11Mbps and an operating frequency of 2.4GHz.

What's in this Guide?

This user guide covers the steps for setting up and using the Wireless-B USB Network Adapter.

- **Chapter 1: Introduction**
This chapter describes the Adapter's applications and this User Guide.
- **Chapter 2: Planning Your Wireless Network**
This chapter discusses a few of the basics about wireless networking.
- **Chapter 3: Getting to Know the Wireless-B USB Network Adapter**
This chapter describes the physical features of the Adapter.
- **Chapter 4: Software Installation and Configuration for Windows 98SE, Me, and 2000**
This chapter instructs you on how to run the Adapter's Setup Wizard and configure the Adapter for Windows 98SE, Me, and 2000.
- **Chapter 5: Hardware Installation**
This chapter shows you how to connect the Adapter to your PC.
- **Chapter 6: Driver Installation and Configuration for Windows XP**
This chapter explains how to install the Adapter's driver and use Windows Zero Configuration.
- **Chapter 7: Using the Wireless Network Monitor for Windows 98SE, Me, and 2000**
This chapter show you how to use the Adapter's Wireless Network Monitor.
- **Appendix A: Troubleshooting**
This appendix describes some potential problems and solutions, as well as frequently asked questions, regarding installation and use of the Adapter.
- **Appendix B: Wireless Security**
This appendix discusses security issues regarding wireless networking and measures you can take to help protect your wireless network.
- **Appendix C: Windows Help**
This appendix describes how you can use Windows Help for instructions about networking, such as installing the TCP/IP protocol.
- **Appendix D: Glossary**
This appendix gives a brief glossary of terms frequently used in networking.

Wireless-B USB Network Adapter

- **Appendix E: Specifications**
This appendix provides the Adapter's technical specifications.
- **Appendix F: Warranty Information**
This appendix supplies the Adapter's warranty information.
- **Appendix G: Regulatory Information**
This appendix supplies the Adapter's regulatory information.
- **Appendix H: Contact Information**
This appendix provides contact information for a variety of Linksys resources, including Technical Support.

Chapter 2: Planning Your Wireless Network

Network Topology

A wireless network is a group of computers, each equipped with one wireless adapter. Computers in a wireless network must be configured to share the same radio channel. Several PCs equipped with wireless cards or adapters can communicate with one another to form an ad-hoc network.

Linksys wireless adapters also provide users access to a wired network when using an access point or wireless router. An integrated wireless and wired network is called an infrastructure network. Each wireless PC in an infrastructure network can talk to any computer in a wired network infrastructure via the access point or wireless router.

An infrastructure configuration extends the accessibility of a wireless PC to a wired network, and can double the effective wireless transmission range for two wireless adapter PCs. Since an access point is able to forward data within a network, the effective transmission range in an infrastructure network can be doubled.

Roaming

Infrastructure mode also supports roaming capabilities for mobile users. Roaming means that you can move your wireless PC within your network and the access points will pick up the wireless PC's signal, providing that they both share the same channel and SSID.

Before you enable roaming, choose a feasible radio channel and optimum access point position. Proper access point positioning combined with a clear radio signal will greatly enhance performance.

topology: the physical layout of a network.

ad-hoc: a group of wireless devices communicating directly with each other (peer-to-peer) without the use of an access point.

infrastructure: a wireless network that is bridged to a wired network via an access point.

roaming: the ability to take a wireless device from one access point's range to another without losing the connection.

ssid: your wireless network's name.

Network Layout

Linksys wireless access points and wireless routers have been designed for use with 802.11b and 802.11g products. With 802.11g products communicating with the 802.11b standard products, these standards can communicate with each other.

Access points and wireless routers are compatible with 802.11b and 802.11g adapters, such as the PC Adapters for your laptop computers, PCI Adapters for your desktop PCs, and USB Adapters for when you want to enjoy USB connectivity. Wireless products will also communicate with the Wireless PrintServer.

When you wish to connect your wired network with your wireless network, network ports on access points and wireless routers can be connected to any of Linksys's switches or routers.

With these, and many other, Linksys products, your networking options are limitless. Go to the Linksys website at www.linksys.com/international for more information about wireless products.

Chapter 3: Getting to Know the USB Network Adapter

The USB Port

The Adapter's USB port is located on the side of the Adapter. You will attach the included USB cable to this port, and the other end of the cable will connect to your PC's USB port. All power is provided through the USB connection, so a power adapter is not needed.



Figure 3-1: USB Port

The LED Indicators

The Adapter's LEDs display information about network activity.



Figure 3-2: Front Panel

Power *Green.* The Power LED lights up when the Adapter is adequately powered by the USB connection.

Link *Green.* The Link LED lights up when the Adapter has an active wireless connection. It will flash when data is transmitted.

Chapter 4: Software Installation and Configuration for Windows 98SE, Me, and 2000

The Wireless-B USB Network Adapter Setup Wizard will guide you through the installation procedure for Windows 98SE, Me, and 2000. The Setup Wizard will install the Wireless Network Monitor and driver, as well as configure the Adapter.



NOTE FOR WINDOWS XP USERS: Do **NOT** run the Wireless-B USB Network Adapter Setup Wizard. Proceed directly to “Chapter 5: Hardware Installation.”



NOTE FOR WINDOWS 98SE, ME, AND 2000 USERS: You must run the Setup Wizard to install the software before installing the hardware.

Insert the **Setup Wizard CD-ROM** into your CD-ROM drive. The Setup Wizard should run automatically, and the *Welcome* screen should appear. If it does not, click the **Start** button and choose **Run**. In the field that appears, enter **D:\setup.exe** (if “D” is the letter of your CD-ROM drive).

On the *Welcome* screen, you have the following choices:

Install - Click the **Install** button to begin the software installation process.

User Guide - Click the **User Guide** button to open the PDF file of this User Guide.

Exit - Click the **Exit** button to exit the Setup Wizard.



Figure 4-1: The Setup Wizard’s Welcome Screen

software: instructions for the computer

The Installation Procedure

1. To install the Adapter, click the **Install** button on the *Welcome* screen.
2. After reading the License Agreement, click the **Next** button if you agree, or click the **Cancel** button to end the installation.

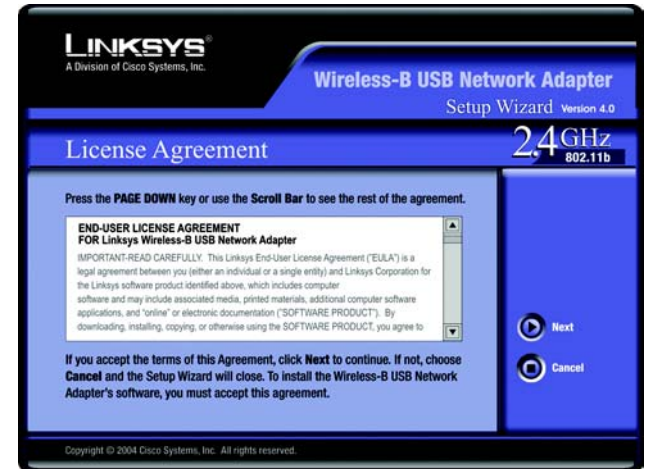


Figure 4-2: The Setup Wizard's License Agreement

3. The Setup Wizard will ask you to choose a network mode. Click the **Infrastructure Mode** radio button if you want your wireless computers to network with computers on your wired network using a wireless access point. Click the **Ad-Hoc Mode** radio button if you want multiple wireless computers to network directly with each other.

In the *SSID* field, enter the SSID of your wireless network. The SSID must be identical for all devices in the network. The default setting is **linksys** (all lowercase). Click the **Next** button.



NOTE: A network SSID should be unique to your network and identical for all devices within the network.

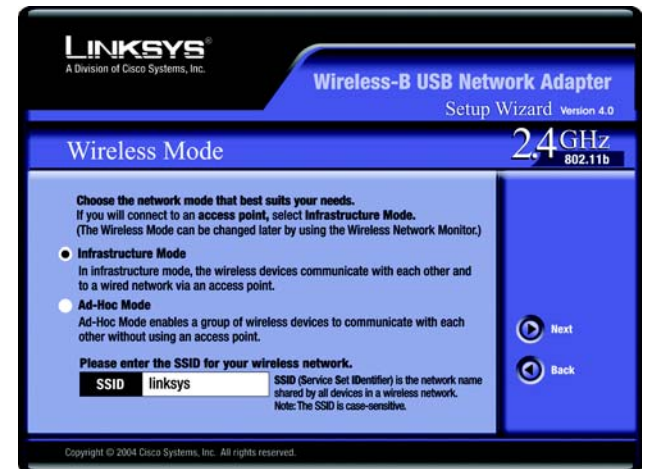


Figure 4-3: The Setup Wizard's Wireless Mode Screen

Wireless-B USB Network Adapter

- If you chose *Infrastructure Mode*, go to Step 5 now. If you chose *Ad-Hoc Mode*, select the correct operating channel for your network. The channel you choose should match the channel set on the other devices in your wireless network. Then click the **Next** button.

- On the *Wireless Security - WEP* screen, configure the Wired Equivalent encryption (WEP) encryption settings for your wireless network. If you enable WEP, then enter a passphrase or WEP key. Click the **Next** button to continue or the **Back** button to return to the previous screen.

WEP - WEP encryption is recommended because it increases wireless network security. To enable WEP encryption, select **64-bit** or **128-bit** encryption from the drop-down menu, and then enter a passphrase or WEP key. If you don't want to use encryption, select **Disabled**.

Passphrase - Instead of manually entering a WEP key, you can enter a passphrase, so a WEP key is automatically generated. The passphrase is case-sensitive and should not have more than 16 alphanumeric characters. This passphrase must match the passphrase of your other wireless network devices and is compatible with Linksys wireless products only. (If you have any non-Linksys wireless products, enter the WEP key manually on those products.)

WEP Key - The WEP key you enter must match the WEP key of your wireless network. For 64-bit encryption, enter exactly 10 hexadecimal characters. For 128-bit encryption, enter exactly 26 hexadecimal characters. Valid hexadecimal characters are "0" to "9" and "A" to "F".

For Advanced Users Only

TX Key - This allows you to access the different WEP keys used by your network access point or wireless router. Select the transmit key number used by your network. For example, if your wireless router uses transmit key number 4, then select **4** from the *TX Key* drop-down box. If your network is not using multiple WEP keys, then keep the default setting, **1**.

Authentication -The default is set to **Auto**, so it will auto-detect **Shared Key** or **Open System** authentication. For Shared Key authentication, both the sender and the recipient share a WEP key for authentication. For Open System authentication, the sender and the recipient do not share a WEP key for authentication. If you are not sure which authentication method to select, keep the default, **Auto**.

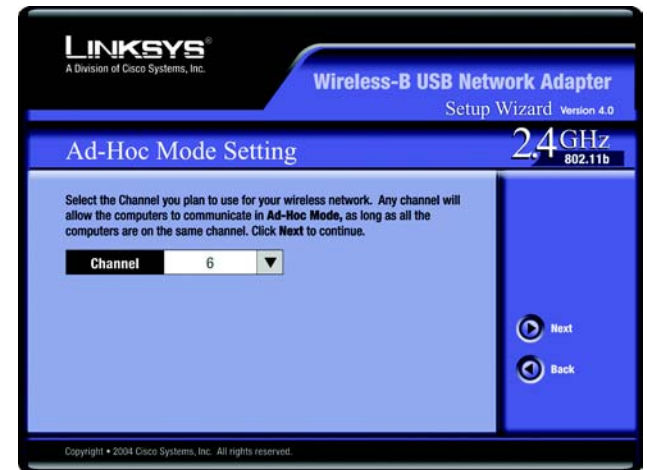


Figure 4-4: The Setup Wizard's Ad-Hoc Mode Setting Screen

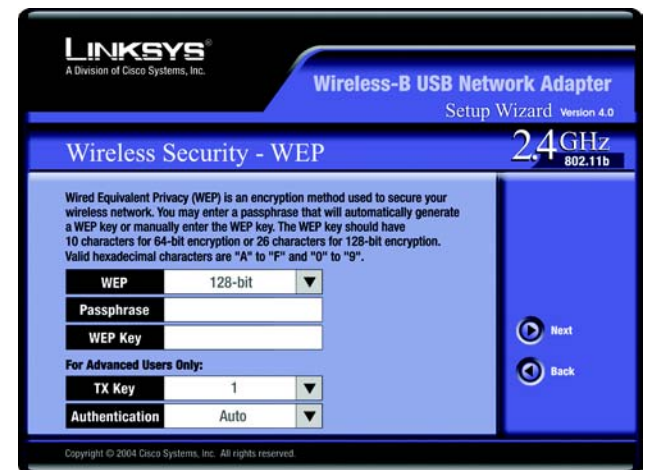


Figure 4-5: The Setup Wizard's Wireless Security - WEP Screen

Wireless-B USB Network Adapter

- The Setup Wizard will ask you to review your settings before it starts to copy files. Click the **Next** button to save these settings, or click the **Back** button to change any settings.

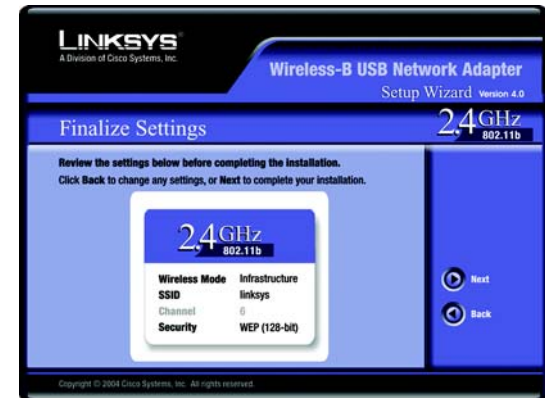


Figure 4-6: The Setup Wizard's Finalize Settings Screen

- If you are using Windows 2000, you may see a Windows Digital Signature warning. As the Adapter has been tested and found to work with Windows, you may click the **Yes** button to continue.



Figure 4-7: Digital Signature Not Found Screen

- After the software has been successfully installed, the *Congratulations* screen will appear. Click the **Exit** button.

Proceed to “Chapter 5: Hardware Installation.”



Figure 4-8: The Setup Wizard's Congratulations Screen

Chapter 5: Hardware Installation



NOTE FOR WINDOWS 98SE, ME, AND 2000 USERS: You must run the Setup Wizard to install the software before installing the hardware.



NOTE FOR WINDOWS XP USERS: You must install the Adapter's hardware before installing the software.

Connecting the Adapter

1. The Adapter comes with the USB cable you will use to connect the Adapter to your PC.

Connect one end of the USB cable to the USB port of the Adapter.

Connect the other end of the USB cable to one of the USB ports on your computer.



Figure 5-1: How the Adapter Connects to Your PC



Figure 5-2: The Adapter's USB Port

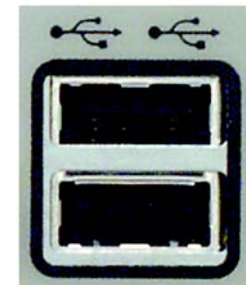


Figure 5-3: A PC's USB port

Wireless-B USB Notebook Adapter

2. The Power LED should light up when the Adapter is plugged in. (Make sure your PC is powered on.)



Figure 5-4: The Adapter's LEDs

3. If you are using Windows 2000, you may see a Windows Digital Signature warning. As the Adapter has been tested and found to work with Windows, you may click the **Yes** button to continue.



Figure 5-5: Digital Signature Not Found Screen

4. Raise the antenna. Make sure the antenna is positioned straight up into the air, at a 90° angle from the Adapter. This will ensure optimum wireless operating range and performance.



NOTE: If you want to attach the Adapter onto your wall, go to the next section, "Using the Adapter's Wall Mount," before proceeding to the appropriate chapter for your PC's operating system.

If your PC is running Windows XP, proceed to "Chapter 6: Driver Installation and Configuration for Windows XP."

If your PC is running Windows 98SE, Me, or 2000, the installation of the Wireless-B USB Network Adapter is complete. If you want to check the link information, search for available wireless networks, or make additional configuration changes, proceed to "Chapter 7: Using the Wireless Network Monitor for Windows 98SE, Me, and 2000."



Figure 5-6: Positioning the Adapter's Antenna

Using the Adapter's Wall Mount

The Adapter's Wall Mount allows you to easily attach the Adapter onto your wall for better reception and more convenient placement.

1. Attach the separate adhesive strip of velcro to the wall where you will be mounting the Adapter.
2. To attach the Wall Mount to the Adapter, slide the Wall Mount into the grooves on the back panel of the Adapter, as shown in Steps A, B, and C.
3. Using the velcro strip on the Adapter's Wall Mount, attach the Adapter to the velcro strip on your wall.

If your PC is running Windows XP, proceed to “Chapter 6: Driver Installation and Configuration for Windows XP.”

If your PC is running Windows 98SE, Me, or 2000, the installation of the Wireless-B USB Network Adapter is complete. If you want to check the link information, search for available wireless networks, or make additional configuration changes, proceed to “Chapter 7: Using the Wireless Network Monitor for Windows 98SE, Me, and 2000.”



Figure 5-7: Using the Wall Mount - Step A



Figure 5-8: Using the Wall Mount - Step B



Figure 5-9: Using the Wall Mount - Step C

Chapter 6: Driver Installation and Configuration for Windows XP

After connecting the Adapter to your computer, you will install the driver and configure the Adapter.



IMPORTANT: Do NOT run the Wireless-B USB Network Adapter Setup Wizard. If the Setup Wizard runs automatically after the Setup CD-ROM has been inserted, click the **Exit** button.

1. Windows XP will automatically detect the Adapter. Insert the Setup CD-ROM into your CD-ROM drive. Click the radio button next to **Install the software automatically (Recommended)**. Then click the **Next** button.



Figure 6-1: Windows XP - Welcome to the Found New Hardware Wizard

2. The *Hardware Installation* screen may appear and indicate that the Adapter has not passed Windows Logo testing. This Adapter has been tested and found to work with Windows XP. Click the **Continue Anyway** button to proceed with the installation.



Figure 6-2: Windows XP - Hardware Installation

Wireless-B USB Network Adapter

3. When Windows has finished installing the driver, click the **Finish** button.

You have now completed the driver installation for the Wireless-B USB Network Adapter. To configure the Adapter, proceed to the next section, “Windows XP Wireless Zero Configuration.”



Figure 6-1: Windows XP - Completing the Found New Hardware Wizard

Windows XP Wireless Zero Configuration



NOTE: Windows XP has a built-in configuration tool. Use Windows XP Wireless Zero Configuration (in the system tray at the bottom of your screen) to configure the Adapter.

1. After installing the Adapter, the Windows XP Wireless Zero Configuration icon will appear in your computer's system tray. Double-click the icon.



NOTE: Steps 2 and 3 are the instructions and screenshots for Windows XP with Service Pack 1 installed.

If you have not installed Service Pack 1, select the network you want, and click the **Connect** button. If the network has WEP encryption enabled, enter the WEP key in the *Network key* field, and then click the **Connect** button.

2. The screen that appears will show any available wireless network. Select the network you want.

If this network has WEP encryption enabled, go to step 3.

If this network does not have WEP encryption enabled, make sure the box next to **Allow me to connect to the selected wireless network, even though it is not secure** is checked. Then click the **Connect** button, and go to step 4.

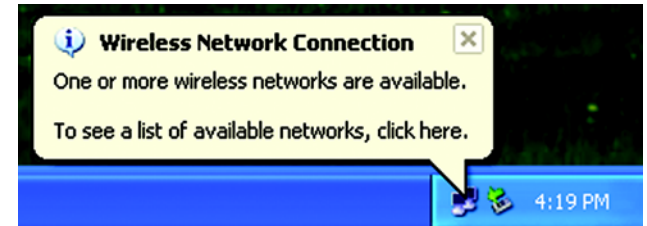


Figure 6-3: The Zero Configuration Icon

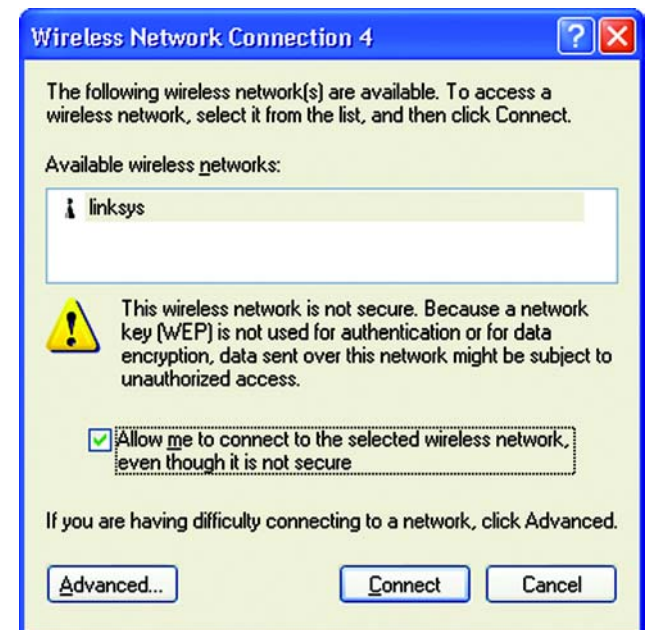


Figure 6-4: Windows XP Zero Configuration Connection

encryption: encoding data transmitted in a network.

Wireless-B USB Network Adapter

- If WEP is enabled, enter the WEP key of your wireless network in the *Network key* field, and re-enter it in the *Confirm network key* field. Then, click the **Connect** button, and go to step 4.

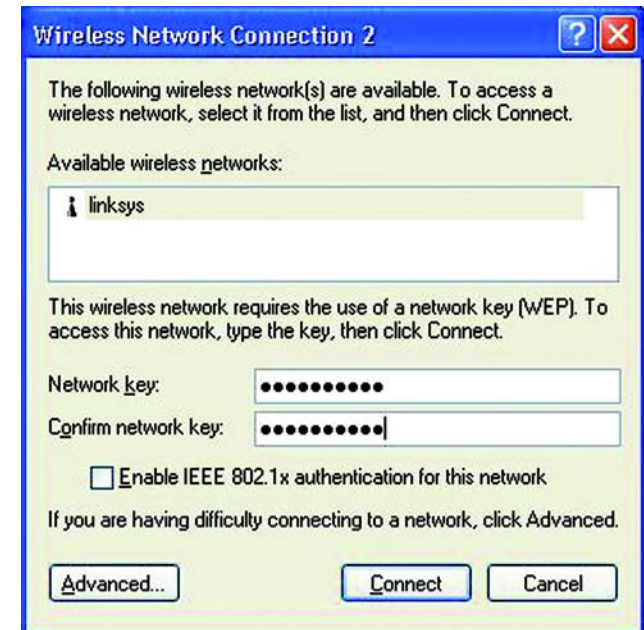


NOTE: Windows XP Wireless Zero Configuration does not support the use of a passphrase. Enter the exact WEP key used by your access point.

- The Zero Configuration icon will show a wireless connection when your connection is active.

For more information about wireless networking on a Windows XP computer, click **Start** and then **Help and Support**. Enter the keyword **wireless** in the field provided, and press the **Enter** key.

Congratulations! The installation of the Wireless-B USB Network Adapter is complete.



without WEP



Figure 6-5: Windows XP Zero Configuration Connection with WEP

Chapter 7: Using the Wireless Network Monitor for Windows 98SE, Me, and 2000

Use the Wireless Network Monitor to check the link information, search for available wireless networks, or create profiles that hold different configuration settings.



IMPORTANT FOR WINDOWS XP USERS: Windows XP has a built-in configuration tool. Use the Windows XP Wireless Zero Configuration (in the system tray at the bottom of your screen) to configure the Adapter. See “Chapter 6: Driver Installation and Configuration for Windows XP.”

Accessing the Wireless Network Monitor

After installing the Adapter, the Wireless-B USB Network Adapter Wireless Network Monitor icon will appear in your system tray. Double-click the icon.

The *Link Information* screen will appear. From this screen, you can find out how strong the current wireless signal is and how good the connection’s quality is. You can also click the **More Information** button to view additional status information about the current wireless connection. To search for available wireless networks, click the **Site Survey** tab. To perform configuration changes, click the **Profiles** tab.

Link Information

The *Link Information* screen displays network mode, signal strength, and link quality information about the current connection. It also provides a button to click for additional status information.

Ad-Hoc Mode or Infrastructure Mode - The screen indicates whether the Adapter is currently working in ad-hoc or infrastructure mode.

Signal Strength - The Signal Strength bar indicates signal strength.

Link Quality - The Link Quality bar indicates the quality of the wireless network connection.

More Information - Click this button to view additional information about the wireless network connection.

Click the **X** (Close) button in the upper right corner to exit the Wireless Network Monitor.



Figure 7-1: Wireless Network Monitor Icon

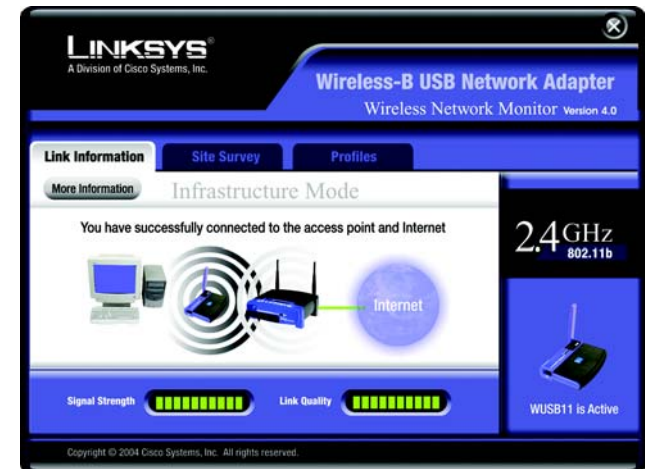


Figure 7-2: Link Information

Wireless Network Status

Status - The status of the wireless network connection.

SSID - The name of the wireless network.

Wireless Mode - The wireless mode currently in use.

Transfer Rate - The data transfer rate of the current connection.

Channel - The channel to which the wireless network devices are set.

Security - The status of the WEP encryption security feature.

Authentication - The type of authentication method used by the network.

IP Address - The IP Address of the Adapter.

Subnet Mask - The Subnet Mask of the Adapter.

Default Gateway - The Default Gateway address of the Adapter.

DNS - The DNS address of the Adapter.

DHCP Client - The status of the DHCP client.

MAC - The MAC address of the wireless network's access point.

Signal Strength - The Signal Strength bar indicates signal strength.

Link Quality - The Link Quality bar indicates the quality of the wireless network connection.

Back - Click the **Back** button to return to the initial *Link Information* screen.

Statistics - Click the **Statistics** button to go to the *Wireless Network Statistics* screen.

Save to Profile - Click the **Save to Profile** button to save the current settings in a configuration profile. Then the *Create connection profile* screen will appear. Enter a name for the new profile, and click the **OK** button.

Click the **X** (Close) button in the upper right corner to exit the Wireless Network Monitor.

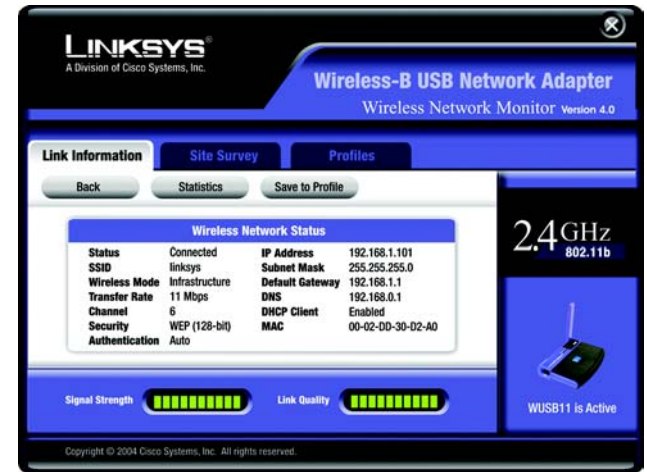


Figure 7-3: Wireless Network Status

ip address: the address used to identify a computer or device on a network.

subnet mask: an address code that determines the size of the network.

default gateway: a device that forwards Internet traffic from your local area network.

dns: the IP address of your ISP's server, which translates the names of websites into IP addresses.

dhcp: a networking protocol that allows administrators to assign temporary IP addresses to network computers by "leasing" an IP address to a user for a limited amount of time, instead of assigning permanent IP addresses.

Wireless Network Statistics

The *Wireless Networks Statistics* screen provides real-time statistics on your current network settings.

Transmit Rate - This is the data transfer rate of the current connection. (In Auto mode, the Adapter dynamically shifts to the fastest data transfer rate possible at any given time.)

Receive Rate - This is the rate at which data is received.

Packets Received - This shows the packets received by the Adapter, in real time, since connecting to the wireless network or since the *Reset Statistics* button was last pressed.

Packets Transmitted - This shows the packets transmitted from the Adapter, in real time, since connecting to the wireless network or since the *Reset Statistics* button was last pressed.

Bytes Received - This shows the bytes received by the Adapter, in real time, since connecting to the wireless network or since the *Reset Statistics* button was last pressed.

Bytes Transmitted - This shows the bytes transmitted from the Adapter, in real time, since connecting to the wireless network or since the *Reset Statistics* button was last pressed.

Noise Level - This shows the level of background noise affecting the wireless signal. A lower reading translates into a higher quality signal.

Signal Strength - This is the intensity of the wireless signal received by the Adapter.

Up Time - This indicates the length of the most recent connection to a wireless network.

Total Up Time - This indicates the cumulative total of the Adapter's connection time.

Driver Version - This shows the version of the Adapter's driver.

Reset Statistics - Click the **Reset Statistics** button if you want to reset to zero the following statistics: Packets Received and Transmitted counts, Bytes Received and Transmitted counts, and Up Time. (The Total Up Time will not be reset.)

Signal Strength - The Signal Strength bar indicates the signal strength.

Link Quality - The Link Quality bar indicates the quality of the wireless network connection.

Back - Click the **Back** button to return to the initial *Link Information* screen.

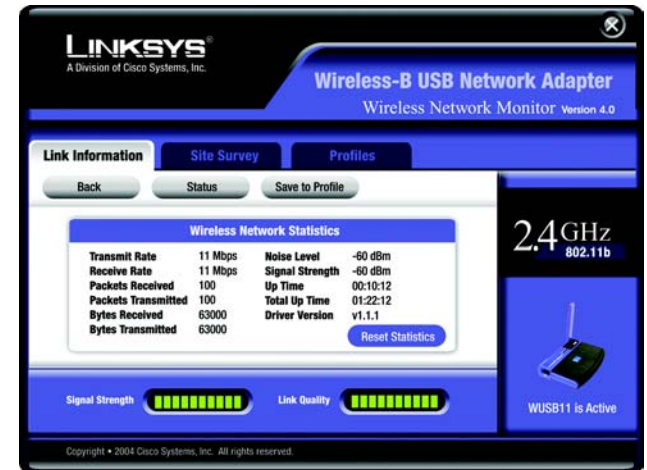


Figure 7-4: Wireless Network Statistics

Status - Click the **Status** button to go to the *Wireless Network Status* screen.

Save to Profile - Click the **Save to Profile** button to save the currently active connection settings to a profile. Then the *Create connection profile* screen will appear. Enter a name for the new profile, and click the **OK** button.

Click the **X** (Close) button in the upper right corner to exit the Wireless Network Monitor.

Site Survey

The *Site Survey* screen displays a list of infrastructure and ad-hoc networks available for connection in the table on the left. This table shows the network's SSID, channel setting, and quality of the wireless signal detected by the Adapter.

Site Information

For each network selected, the following settings are listed:

SSID - The name of the wireless network.

Wireless Mode - The wireless mode currently in use.

Channel - The channel to which the wireless network devices are set.

Security - The status of the WEP encryption security feature.

MAC - The MAC address of the wireless network's access point.

Refresh - Click the **Refresh** button to perform a new search for wireless devices.

Connect - To connect to one of the networks on the list, select the wireless network, and click the **Connect** button. If the network has WEP encryption enabled, you will see the *WEP Key Needed for Connection* screen.

From the *WEP* drop-down menu, select the level of encryption used by the wireless network: **64-bit** or **128-bit**.

If the wireless network uses a passphrase, enter the passphrase in the *Passphrase* field. If the wireless network uses a WEP key, enter the WEP key in the *WEP Key 1* field.

Click the **Connect** button to complete the network connection and return to the *Site Survey* screen, or click the **Cancel** button to cancel the network connection and return to the *Site Survey* screen.

On the *Site Survey* screen, click the **X** (Close) button in the upper right corner to exit the Wireless Network Monitor.

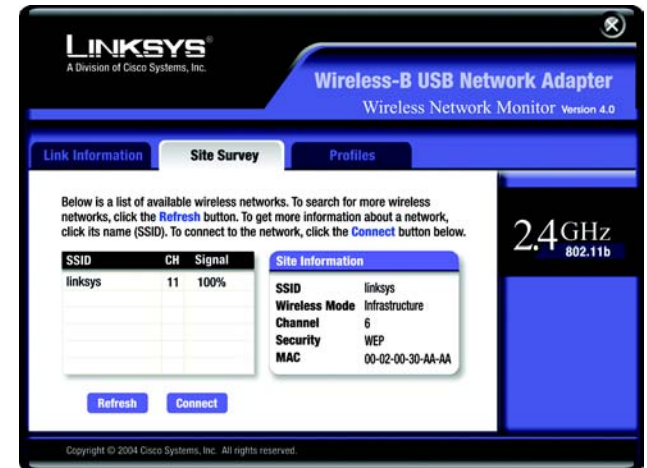


Figure 7-5: Site Survey

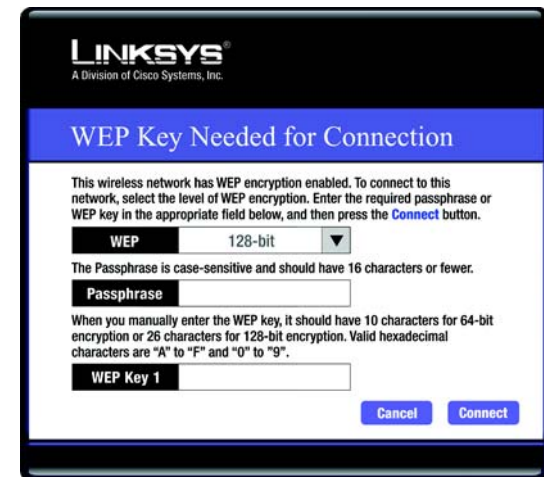


Figure 7-6: WEP Encryption

wep: a method of encrypting network data transmitted on a wireless network for greater security.

Profiles

The *Profiles* screen lets you save different configuration profiles for different network setups. The table on the left displays a list of available profiles and their associated SSIDs.

Profile Information

For each profile selected, the following are listed:

Wireless Mode - The mode of the wireless network currently in use.

Transfer Rate - The Adapter is set to Auto mode, so it will dynamically shift to the fastest data transfer rate possible at any given time.

Channel - The channel to which the wireless network devices are set.

Security - The status of the WEP encryption security feature.

Authentication - This is the authentication method used by the network.

Connect - To connect to a wireless network using a specific profile, select the profile, and click the **Connect** button.

Edit - Select a profile, and click the **Edit** button to change an existing profile.

New - Click the **New** button to create a new profile. See the next section, "Creating a New Profile," for detailed instructions.



Figure 7-7: Profiles

Import - Click the **Import** button to import a profile that has been saved in another location. Select the appropriate file, and click the **Open** button.

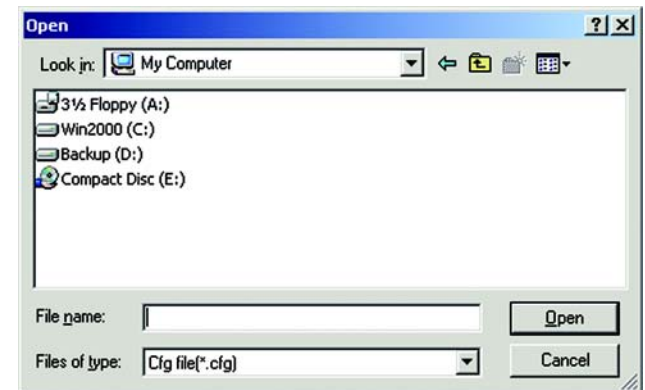


Figure 7-8: Importing a Profile

Export - Select the profile you want to save in a different location, and click the **Export** button. Direct Windows to the appropriate folder, and click the **Save** button.



NOTE: If you want to export more than one profile, you have to export them one at a time.

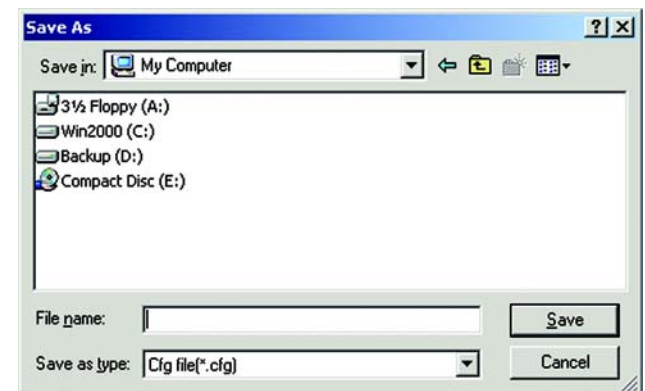


Figure 7-9: Exporting a Profile

Delete - Click the **Delete** button to delete a profile.

Click the **X** (Close) button in the upper right corner to exit the Wireless Network Monitor.

Creating a New Profile

1. On the *Profiles* screen, click the **New** button to create a new profile.

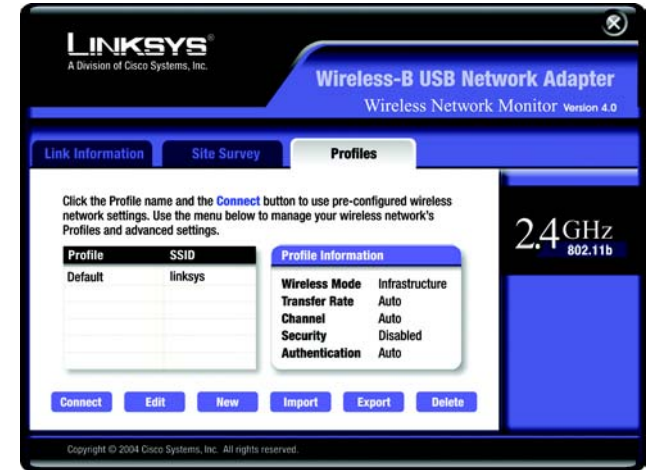


Figure 7-10: Creating a New Profile

2. Enter a name for the new profile, and click the **OK** button. Click the **Cancel** button to return to the *Profiles* screen.



Figure 7-11: Enter Profile Name

3. The *Network Settings* screen will appear next. If your network has a DHCP server, such as a router that automatically assigns network settings, click the radio button next to **Obtain network settings automatically (DHCP)**. Click the **Next** button to continue, or click the **Cancel** button to return to the *Profiles* screen.

If your network does not have a DHCP server, click the radio button next to **Specify network settings**. In the *IP Address*, *Subnet Mask*, *Default Gateway*, and *DNS 1* and *2* fields, enter an IP Address, Subnet Mask, Default Gateway, and DNS appropriate for your network. You must specify the IP Address and Subnet Mask on this screen. If you are unsure about the Default Gateway and DNS address, leave these fields alone. Click the **Next** button to continue, or click the **Cancel** button to return to the *Profiles* screen.

IP Address - This IP Address must be unique to your network.

Subnet Mask - The Adapter's Subnet Mask must be the same as your wired network's Subnet Mask.

Default Gateway - Enter the IP address of your network's Gateway here.

DNS 1 and **DNS 2** - Enter the DNS address of your wired Ethernet network here.

4. The *Wireless Mode* screen shows a choice of two network modes. Click the **Infrastructure Mode** radio button if you want your wireless computers to communicate with computers on your wired network via a wireless access point. Click the **Ad-Hoc Mode** radio button if you want multiple wireless computers to communicate directly with each other.

Then, complete the *SSID* field. Click the **Next** button to continue or the **Back** button to return to the previous screen.

Infrastructure Mode - This mode allows wireless and wired networks to communicate through an access point.

Ad-Hoc Mode - This mode allows wireless-equipped computers to communicate directly with each other. No access point is used.

SSID - The SSID is the unique name shared by all devices in a wireless network. The SSID must be identical for all devices in the wireless network. It is case-sensitive and must not exceed 32 characters (use any of the characters on the keyboard). Make sure this setting is the same for all devices in your wireless network.

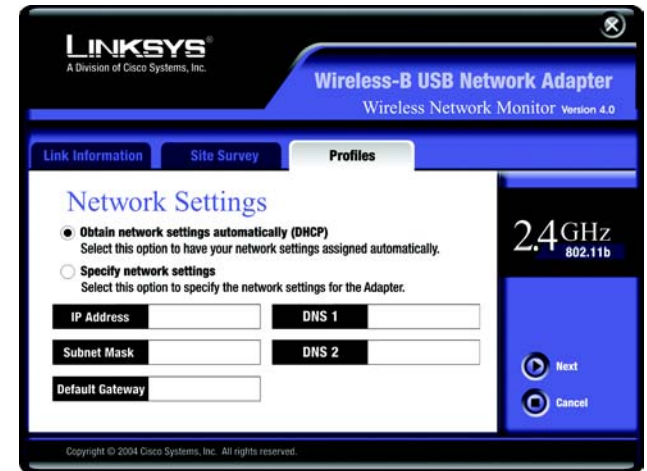


Figure 7-12: Network Settings for New Profile



Figure 7-13: Wireless Mode for New Profile

- If you chose *Infrastructure Mode*, then proceed to step 6. If you chose *Ad-Hoc Mode*, then the *Ad-Hoc Mode Setting* screen will now appear. Select the channel at which the network broadcasts its wireless signal. Then, click the **Next** button to continue or the **Back** button to return to the previous screen.

Channel - From the drop-down box, select the appropriate channel that corresponds with your network settings. All devices in your wireless network must use the same channel in order to communicate.

- The *Wireless Security - WEP* screen will appear. Choose the Wired Equivalent Privacy (WEP) encryption settings for your wireless network. If you enable WEP, enter a passphrase or WEP key. Then, click the **Next** button to continue or the **Back** button to return to the previous screen.

WEP - If you do not want to use WEP encryption, keep the default setting, **Disable**. To use WEP encryption (recommended to increase wireless network security), select **64-bit / 10 hex. characters** or **128-bit / 26 hex. characters** from the drop-down menu, and enter a passphrase or WEP key.

Passphrase - Instead of manually entering a WEP key, you can enter a passphrase in the *Passphrase* field, so a WEP key is automatically generated. It is case-sensitive and should not be longer than 16 alphanumeric characters. This passphrase must match the passphrase of your other wireless network devices and is compatible with Linksys wireless products only. (If you have any non-Linksys wireless products, enter the WEP key manually on those products.)

For Advanced Users Only:

WEP Key - The WEP key you enter must match the WEP key of your wireless network. If you are using 64-bit WEP encryption, then the key must consist of exactly 10 hexadecimal characters. If you are using 128-bit WEP encryption, then the key must consist of exactly 26 hexadecimal characters. Valid hexadecimal characters are "0" to "9" and "A" to "F".

TX Key - This allows you to access the different WEP keys used by your network access point or wireless router. Select the transmit key number used by your network. For example, if your wireless router uses transmit key number 4, then select **4** from the *TX Key* drop-down box. If your network is not using multiple WEP keys, then keep the default setting, **1**.

Authentication -The default is set to **Auto**, so it will auto-detect **Shared Key** or **Open System** authentication. For Shared Key authentication, both the sender and the recipient share a WEP key for authentication. For Open System authentication, the sender and the recipient do not share a WEP key for authentication. If you are not sure which authentication method to select, keep the default, **Auto**.



Figure 7-14: Ad-Hoc Mode Setting for New Profile



Figure 7-15: Wireless Security - WEP for New Profile

Wireless-B USB Network Adapter

- The *Confirm New Settings* screen will appear next and show the new settings. To save these settings, click the **Save** button. To edit these settings, click the **Back** button. To cancel these settings, click the **Cancel** button.



Figure 7-16: Confirm New Settings for New Profile

- The *Congratulations* screen will appear next. Click **Connect to Network** to implement the new settings immediately and return to the *Link Information* screen. Click **Return to Profiles Screen** to keep the current settings active and return to the *Profiles* screen.

You have successfully created a connection profile.

Click the X (Close) button in the upper right corner to exit the Wireless Network Monitor.



Figure 7-17: Congratulations for New Profile

Appendix A: Troubleshooting

This appendix consists of two parts: “Common Problems and Solutions” and “Frequently Asked Questions.” This appendix provides solutions to problems that may occur during the installation and operation of the Wireless-B USB Network Adapter. Read the description below to solve your problems. If you can't find an answer here, check the Linksys website at www.linksys.com.

Common Problems and Solutions

1. My computer does not recognize the Wireless-B USB Network Adapter.

Make sure that the Wireless-B USB Network Adapter is properly inserted into the USB port.

Also, make sure that the USB Controller is enabled in the BIOS. Check with your motherboard's user guide for more information.

2. The Wireless-B USB Network Adapter does not work properly.

Reinsert the Wireless-B USB Network Adapter into the notebook or desktop's USB port.

For Windows 98SE or Me, right-click on **My Computer**, and select **Properties**. Select the **Device Manager** tab, and click on the **Network Adapter**. You will find the Wireless-B USB Network Adapter if it is installed successfully. If you see a yellow exclamation mark, the resources may be conflicting and you must follow the steps below:

- Uninstall the driver software from your PC.
- Restart your PC and repeat the hardware and software installation as specified in this User Guide.

3. I cannot communicate with the other computers linked via Ethernet in the Infrastructure configuration.

Make sure that the notebook or desktop is powered on.

Make sure that the Wireless-B USB Network Adapter is configured with the same SSID and WEP settings as the other computers in the Infrastructure configuration.

Frequently Asked Questions

Can I run an application from a remote computer over the wireless network?

This will depend on whether or not the application is designed to be used over a network. Consult the application's user guide to determine if it supports operation over a network.

Can I play computer games with other members of the wireless network?

Yes, as long as the game supports multiple players over a LAN (local area network). Refer to the game's user guide for more information.

What is the IEEE 802.11b standard?

It is one of the IEEE standards for wireless networks. The 802.11b standard allows wireless networking hardware from different manufacturers to communicate, provided that the hardware complies with the 802.11b standard. The 802.11b standard states a maximum data transfer rate of 11Mbps and an operating frequency of 2.4GHz.

mbps: one million bits per second; a unit of measurement for data transmission.

What IEEE 802.11b features are supported?

The product supports the following IEEE 802.11b functions:

- CSMA/CA plus Acknowledge protocol
- Multi-Channel Roaming
- Automatic Rate Selection
- RTS/CTS feature
- Fragmentation
- Power Management

fragmentation: breaking a packet into smaller units when transmitting over a network medium that cannot support the original size of the packet.

What is ad-hoc mode?

When a wireless network is set to ad-hoc mode, the wireless-equipped computers are configured to communicate directly with each other. The ad-hoc wireless network will not communicate with any wired network.

What is infrastructure mode?

When a wireless network is set to infrastructure mode, the wireless network is configured to communicate with a wired network through a wireless access point.

What is roaming?

Roaming is the ability of a portable computer user to communicate continuously while moving freely throughout an area greater than that covered by a single access point. Before using the roaming function, the workstation must make sure that it is the same channel number with the access point of dedicated coverage area.

To achieve true seamless connectivity, the wireless LAN must incorporate a number of different functions. Each node and access point, for example, must always acknowledge receipt of each message. Each node must

maintain contact with the wireless network even when not actually transmitting data. Achieving these functions simultaneously requires a dynamic RF networking technology that links access points and nodes. In such a system, the user's end node undertakes a search for the best possible access to the system. First, it evaluates such factors as signal strength and quality, as well as the message load currently being carried by each access point and the distance of each access point to the wired backbone. Based on that information, the node next selects the right access point and registers its address. Communications between end node and host computer can then be transmitted up and down the backbone.

As the user moves on, the end node's RF transmitter regularly checks the system to determine whether it is in touch with the original access point or whether it should seek a new one. When a node no longer receives acknowledgment from its original access point, it undertakes a new search. Upon finding a new access point, it then re-registers, and the communication process continues.

What is ISM band?

The FCC and their counterparts outside of the U.S. have set aside bandwidth for unlicensed use in the ISM (Industrial, Scientific and Medical) band. Spectrum in the vicinity of 2.4 GHz, in particular, is being made available worldwide. This presents a truly revolutionary opportunity to place convenient high-speed wireless capabilities in the hands of users around the globe.

What is Spread Spectrum?

Spread Spectrum technology is a wideband radio frequency technique developed by the military for use in reliable, secure, mission-critical communications systems. It is designed to trade off bandwidth efficiency for reliability, integrity, and security. In other words, more bandwidth is consumed than in the case of narrowband transmission, but the trade-off produces a signal that is, in effect, louder and thus easier to detect, provided that the receiver knows the parameters of the spread-spectrum signal being broadcast. If a receiver is not tuned to the right frequency, a spread-spectrum signal looks like background noise. There are two main alternatives, Direct Sequence Spread Spectrum (DSSS) and Frequency Hopping Spread Spectrum (FHSS).

What is DSSS? What is FHSS? And what are their differences?

Frequency-Hopping Spread-Spectrum (FHSS) uses a narrowband carrier that changes frequency in a pattern that is known to both transmitter and receiver. Properly synchronized, the net effect is to maintain a single logical channel. To an unintended receiver, FHSS appears to be short-duration impulse noise. Direct-Sequence Spread-Spectrum (DSSS) generates a redundant bit pattern for each bit to be transmitted. This bit pattern is called a chip (or chipping code). The longer the chip, the greater the probability that the original data can be recovered. Even if one or more bits in the chip are damaged during transmission, statistical techniques embedded in the radio can recover the original data without the need for retransmission. To an unintended receiver, DSSS appears as low power wideband noise and is rejected (ignored) by most narrowband receivers.

ism band: radio bandwidth utilized in wireless transmissions.

spread spectrum: wideband radio frequency technique used for more reliable and secure data transmission.

dsss: Frequency transmission with a redundant bit pattern resulting in a lower probability of information being lost in transit.

Would the information be intercepted while transmitting on air?

WLAN features two-fold protection in security. On the hardware side, as with Direct Sequence Spread Spectrum technology, it has the inherent security feature of scrambling. On the software side, WLAN offers the encryption function (WEP) to enhance security and access control.

What is WEP?

WEP is Wired Equivalent Privacy, a data privacy mechanism based on a shared key algorithm, as described in the IEEE 802.11 standard.

Appendix B: Wireless Security

Linksys wants to make wireless networking as safe and easy for you as possible. The current generation of Linksys products provide several network security features, but they require specific action on your part for implementation. So, keep the following in mind whenever you are setting up or using your wireless network.

Security Precautions

The following is a complete list of security precautions to take (at least steps 1 through 5 should be followed):

1. Change the default SSID.
2. Disable SSID Broadcast.
3. Change the default password for the Administrator account.
4. Enable MAC Address Filtering.
5. Change the SSID periodically.
6. Use the highest encryption algorithm possible. Use WPA if it is available. Please note that this may reduce your network performance.
7. Change the WEP encryption keys periodically.

Security Threats Facing Wireless Networks

Wireless networks are easy to find. Hackers know that in order to join a wireless network, wireless networking products first listen for “beacon messages”. These messages can be easily decrypted and contain much of the network’s information, such as the network’s SSID (Service Set Identifier). Here are the steps you can take:

Change the administrator’s password regularly. With every wireless networking device you use, keep in mind that network settings (SSID, WEP keys, etc.) are stored in its firmware. Your network administrator is the only person who can change network settings. If a hacker gets a hold of the administrator’s password, he, too, can change those settings. So, make it harder for a hacker to get that information. Change the administrator’s password regularly.

SSID. There are several things to keep in mind about the SSID:



NOTE: Some of these security features are available only through the network router or access point. Refer to the router or access point’s documentation for more information.

Wireless-B USB Network Adapter

1. Disable Broadcast
2. Make it unique
3. Change it often

Most wireless networking devices will give you the option of broadcasting the SSID. While this option may be more convenient, it allows anyone to log into your wireless network. This includes hackers. So, don't broadcast the SSID.

Wireless networking products come with a default SSID set by the factory. (The Linksys default SSID is "linksys".) Hackers know these defaults and can check these against your network. Change your SSID to something unique and not something related to your company or the networking products you use.

Change your SSID regularly so that any hackers who have gained access to your wireless network will have to start from the beginning in trying to break in.

MAC Addresses. Enable MAC Address filtering. MAC Address filtering will allow you to provide access to only those wireless nodes with certain MAC Addresses. This makes it harder for a hacker to access your network with a random MAC Address.

WEP Encryption. Wired Equivalent Privacy (WEP) is often looked upon as a cure-all for wireless security concerns. This is overstating WEP's ability. Again, this can only provide enough security to make a hacker's job more difficult.

There are several ways that WEP can be maximized:

1. Use the highest level of encryption possible
2. Use "Shared Key" authentication
3. Change your WEP key regularly

WPA. Wi-Fi Protected Access (WPA) is the newest and best available standard in Wi-Fi security. Two modes are available: Pre-Shared Key and RADIUS. Pre-Shared Key gives you a choice of two encryption methods: TKIP (Temporal Key Integrity Protocol), which utilizes a stronger encryption method and incorporates Message Integrity Code (MIC) to provide protection against hackers, and AES (Advanced Encryption System), which utilizes a symmetric 128-Bit block data encryption. RADIUS (Remote Authentication Dial-In User Service) utilizes a RADIUS server for authentication and the use of dynamic TKIP, AES, or WEP.

WPA Pre-Shared Key. If you do not have a RADIUS server, Select the type of algorithm, TKIP or AES, enter a password in the Pre-Shared key field of 8-64 characters, and enter a Group Key Renewal period time



IMPORTANT: Always remember that each device in your wireless network **MUST** use the same encryption method and encryption key or your wireless network will not function properly.

Wireless-B USB Network Adapter

between 0 and 99,999 seconds, which instructs the Router or other device how often it should change the encryption keys.

WPA RADIUS. WPA used in coordination with a RADIUS server. (This should only be used when a RADIUS server is connected to the Router or other device.) First, select the type of WPA algorithm, **TKIP** or **AES**. Enter the RADIUS server's IP Address and port number, along with a key shared between the device and the server. Last, enter a Group Key Renewal period, which instructs the device how often it should change the encryption keys.

RADIUS. WEP used in coordination with a RADIUS server. (This should only be used when a RADIUS server is connected to the Router or other device.) First, enter the RADIUS server's IP Address and port number, along with a key shared between the device and the server. Then, select a WEP key and a level of WEP encryption, and either generate a WEP key through the Passphrase or enter the WEP key manually.

Implementing encryption may have a negative impact on your network's performance, but if you are transmitting sensitive data over your network, encryption should be used.

These security recommendations should help keep your mind at ease while you are enjoying the most flexible and convenient technology Linksys has to offer.

Appendix C: Windows Help

Almost all wireless products require Microsoft Windows. Windows is the most used operating system in the world and comes with many features that help make networking easier. These features can be accessed through Windows Help and are described in this appendix.

TCP/IP

Before a computer can communicate with an access point or wireless router, TCP/IP must be enabled. TCP/IP is a set of instructions, or protocol, all PCs follow to communicate over a network. This is true for wireless networks as well. Your PCs will not be able to utilize wireless networking without having TCP/IP enabled. Windows Help provides complete instructions on enabling TCP/IP.

Shared Resources

If you wish to share printers, folder, or files over your network, Windows Help provides complete instructions on utilizing shared resources.

Network Neighborhood/My Network Places

Other PCs on your network will appear under Network Neighborhood or My Network Places (depending upon the version of Windows you're running). Windows Help provides complete instructions on adding PCs to your network.

Appendix D: Glossary

802.11b - An IEEE wireless networking standard that specifies a maximum data transfer rate of 11Mbps and an operating frequency of 2.4GHz.

Access Point - A device that allows wireless-equipped computers and other devices to communicate with a wired network. Also used to expand the range of a wireless network.

Adapter - A device that adds network functionality to your PC.

Ad-hoc - A group of wireless devices communicating directly with each other (peer-to-peer) without the use of an access point.

Backbone - The part of a network that connects most of the systems and networks together, and handles the most data.

Bandwidth - The transmission capacity of a given device or network.

Beacon Interval - Data transmitted on your wireless network that keeps the network synchronized.

Bit - A binary digit.

Boot - To start a device and cause it to start executing instructions.

Bridge - A device that connects different networks.

Broadband - An always-on, fast Internet connection.

Browser - An application program that provides a way to look at and interact with all the information on the World Wide Web.

Buffer - A shared or assigned memory area that is used to support and coordinate different computing and networking activities so one isn't held up by the other.

Byte - A unit of data that is usually eight bits long

Cable Modem - A device that connects a computer to the cable television network, which in turn connects to the Internet.

Wireless-B USB Network Adapter

CSMA/CA (Carrier Sense Multiple Access/Collision Avoidance) - A method of data transfer that is used to prevent data collisions.

CTS (Clear To Send) - A signal sent by a wireless device, signifying that it is ready to receive data.

Daisy Chain - A method used to connect devices in a series, one after the other.

Database - A collection of data that is organized so that its contents can easily be accessed, managed, and updated.

DDNS (Dynamic Domain Name System) - Allows the hosting of a website, FTP server, or e-mail server with a fixed domain name (e.g., www.xyz.com) and a dynamic IP address.

Default Gateway - A device that forwards Internet traffic from your local area network.

DHCP (Dynamic Host Configuration Protocol) - A networking protocol that allows administrators to assign temporary IP addresses to network computers by “leasing” an IP address to a user for a limited amount of time, instead of assigning permanent IP addresses.

DMZ (Demilitarized Zone) - Removes the Router's firewall protection from one PC, allowing it to be “seen” from the Internet.

DNS (Domain Name Server) - The IP address of your ISP's server, which translates the names of websites into IP addresses.

Domain - A specific name for a network of computers.

Download - To receive a file transmitted over a network.

DSL (Digital Subscriber Line) - An always-on broadband connection over traditional phone lines.

DSSS (Direct-Sequence Spread-Spectrum) - Frequency transmission with a redundant bit pattern resulting in a lower probability of information being lost in transit.

DTIM (Delivery Traffic Indication Message) - A message included in data packets that can increase wireless efficiency.

Dynamic IP Address - A temporary IP address assigned by a DHCP server.

Encryption - Encoding data transmitted in a network.

Wireless-B USB Network Adapter

Ethernet - IEEE standard network protocol that specifies how data is placed on and retrieved from a common transmission medium.

Finger - A program that tells you the name associated with an e-mail address.

Firewall - A set of related programs located at a network gateway server that protects the resources of a network from users from other networks.

Firmware - The programming code that runs a networking device.

Fragmentation - Breaking a packet into smaller units when transmitting over a network medium that cannot support the original size of the packet.

FTP (File Transfer Protocol) - A protocol used to transfer files over a TCP/IP network.

Full Duplex - The ability of a networking device to receive and transmit data simultaneously.

Gateway - A device that interconnects networks with different, incompatible communications protocols.

Half Duplex - Data transmission that can occur in two directions over a single line, but only one direction at a time.

Hardware - The physical aspect of computers, telecommunications, and other information technology devices.

HTTP (HyperText Transport Protocol) - The communications protocol used to connect to servers on the World Wide Web.

Infrastructure - A wireless network that is bridged to a wired network via an access point.

IP (Internet Protocol) - A protocol used to send data over a network.

IP Address - The address used to identify a computer or device on a network.

IPCONFIG - A Windows 2000 and XP utility that displays the IP address for a particular networking device.

IPSec (Internet Protocol Security) - A VPN protocol used to implement secure exchange of packets at the IP layer.

ISM band - Radio bandwidth utilized in wireless transmissions.

ISP (Internet Service Provider) - A company that provides access to the Internet.

LAN - The computers and networking products that make up your local network.

Wireless-B USB Network Adapter

MAC (Media Access Control) Address - The unique address that a manufacturer assigns to each networking device.

Mbps (MegaBits Per Second) - One million bits per second; a unit of measurement for data transmission.

mIRC - An Internet Relay Chat program that runs under Windows.

Multicasting - Sending data to a group of destinations at once.

NAT (Network Address Translation) - NAT technology translates IP addresses of a local area network to a different IP address for the Internet.

Network - A series of computers or devices connected for the purpose of data sharing, storage, and/or transmission between users.

NNTP (Network News Transfer Protocol) - The protocol used to connect to Usenet groups on the Internet.

Node - A network junction or connection point, typically a computer or work station.

Packet - A unit of data sent over a network.

Passphrase - Used much like a password, a passphrase simplifies the WEP encryption process by automatically generating the WEP encryption keys for Linksys products.

Ping (Packet INternet Groper) - An Internet utility used to determine whether a particular IP address is online.

POP3 (Post Office Protocol 3) - A standard mail server commonly used on the Internet.

Port - The connection point on a computer or networking device used for plugging in cables or adapters.

Power over Ethernet (PoE) - A technology enabling an Ethernet network cable to deliver both data and power.

PPPoE (Point to Point Protocol over Ethernet) - A type of broadband connection that provides authentication (username and password) in addition to data transport.

PPTP (Point-to-Point Tunneling Protocol) - A VPN protocol that allows the Point to Point Protocol (PPP) to be tunneled through an IP network. This protocol is also used as a type of broadband connection in Europe.

Preamble - Part of the wireless signal that synchronizes network traffic.

RJ-45 (Registered Jack-45) - An Ethernet connector that holds up to eight wires.

Wireless-B USB Network Adapter

Roaming - The ability to take a wireless device from one access point's range to another without losing the connection.

Router - A networking device that connects multiple networks together.

RTS (Request To Send) - A networking method of coordinating large packets through the RTS Threshold setting.

Server - Any computer whose function in a network is to provide user access to files, printing, communications, and other services.

SMTP (Simple Mail Transfer Protocol) - The standard e-mail protocol on the Internet.

SNMP (Simple Network Management Protocol) - A widely used network monitoring and control protocol.

Software - Instructions for the computer. A series of instructions that performs a particular task is called a "program".

SOHO (Small Office/Home Office) - Market segment of professionals who work at home or in small offices.

SPI (Stateful Packet Inspection) Firewall - A technology that inspects every incoming packet of information before allowing it to enter the network.

Spread Spectrum - Wideband radio frequency technique used for more reliable and secure data transmission.

SSID (Service Set Identifier) - Your wireless network's name.

Static IP Address - A fixed address assigned to a computer or device that is connected to a network.

Static Routing - Forwarding data in a network via a fixed path.

Subnet Mask - An address code that determines the size of the network.

Switch - 1. A data switch that connects computing devices to host computers, allowing a large number of devices to share a limited number of ports. 2. A device for making, breaking, or changing the connections in an electrical circuit.

TCP (Transmission Control Protocol) - A network protocol for transmitting data that requires acknowledgement from the recipient of data sent.

TCP/IP (Transmission Control Protocol/Internet Protocol) - A set of instructions PCs use to communicate over a network.

Telnet - A user command and TCP/IP protocol used for accessing remote PCs.

Wireless-B USB Network Adapter

TFTP (Trivial File Transfer Protocol) - A version of the TCP/IP FTP protocol that has no directory or password capability.

Throughput - The amount of data moved successfully from one node to another in a given time period.

Topology - The physical layout of a network.

TX Rate - Transmission Rate.

UDP (User Datagram Protocol) - A network protocol for transmitting data that does not require acknowledgement from the recipient of the data that is sent.

Upgrade - To replace existing software or firmware with a newer version.

Upload - To transmit a file over a network.

URL (Uniform Resource Locator) - The address of a file located on the Internet.

VPN (Virtual Private Network) - A security measure to protect data as it leaves one network and goes to another over the Internet.

WAN (Wide Area Network)- The Internet.

WEP (Wired Equivalent Privacy) - A method of encrypting network data transmitted on a wireless network for greater security.

WINIPCFG - A Windows 98 and Me utility that displays the IP address for a particular networking device.

WLAN (Wireless Local Area Network) - A group of computers and associated devices that communicate with each other wirelessly.

Appendix E: Specifications

Model Number	WUSB11
Standards	IEEE 802.11b, USB 1.1
Channels	11 Channels (most of the western hemisphere) 13 Channels (most of Europe)
Ports	USB
LEDs	Power, Link
Receive Sensitivity	-85dBm @ 11Mbps (typical)
Transmit Power	18dBm (typical)
Security Features	WEP Encryption
WEP Key Bits	64, 128 Bit
Dimensions	91 mm x 23 mm x 71 mm
Unit Weight	0,08 kg
Certifications	FCC Class B, CE
Operating Temp.	0°C to 55°C
Storage Temp.	-25°C to 70°C
Operating Humidity	0% to 70% Non-Condensing
Storage Humidity	10% to 90% Non-Condensing
Warranty	2 Years

Appendix F: Warranty Information

LIMITED WARRANTY

Linksys warrants to You that, for a period of two years (the “Warranty Period”), your Linksys Product will be substantially free of defects in materials and workmanship under normal use. Your exclusive remedy and Linksys' entire liability under this warranty will be for Linksys at its option to repair or replace the Product or refund Your purchase price less any rebates. This limited warranty extends only to the original purchaser.

If the Product proves defective during the Warranty Period call Linksys Technical Support in order to obtain a Return Authorization Number, if applicable. **BE SURE TO HAVE YOUR PROOF OF PURCHASE ON HAND WHEN CALLING.** If You are requested to return the Product, mark the Return Authorization Number clearly on the outside of the package and include a copy of your original proof of purchase. **RETURN REQUESTS CANNOT BE PROCESSED WITHOUT PROOF OF PURCHASE.** You are responsible for shipping defective Products to Linksys. Linksys pays for UPS Ground shipping from Linksys back to You only. Customers located outside of the United States of America and Canada are responsible for all shipping and handling charges.

ALL IMPLIED WARRANTIES AND CONDITIONS OF MERCHANTABILITY OR FITNESS FOR A PARTICULAR PURPOSE ARE LIMITED TO THE DURATION OF THE WARRANTY PERIOD. ALL OTHER EXPRESS OR IMPLIED CONDITIONS, REPRESENTATIONS AND WARRANTIES, INCLUDING ANY IMPLIED WARRANTY OF NON-INFRINGEMENT, ARE DISCLAIMED. Some jurisdictions do not allow limitations on how long an implied warranty lasts, so the above limitation may not apply to You. This warranty gives You specific legal rights, and You may also have other rights which vary by jurisdiction.

This warranty does not apply if the Product (a) has been altered, except by Linksys, (b) has not been installed, operated, repaired, or maintained in accordance with instructions supplied by Linksys, or (c) has been subjected to abnormal physical or electrical stress, misuse, negligence, or accident. In addition, due to the continual development of new techniques for intruding upon and attacking networks, Linksys does not warrant that the Product will be free of vulnerability to intrusion or attack.

TO THE EXTENT NOT PROHIBITED BY LAW, IN NO EVENT WILL LINKSYS BE LIABLE FOR ANY LOST DATA, REVENUE OR PROFIT, OR FOR SPECIAL, INDIRECT, CONSEQUENTIAL, INCIDENTAL OR PUNITIVE DAMAGES, REGARDLESS OF THE THEORY OF LIABILITY (INCLUDING NEGLIGENCE), ARISING OUT OF OR RELATED TO THE USE OF OR INABILITY TO USE THE PRODUCT (INCLUDING ANY SOFTWARE), EVEN IF LINKSYS HAS BEEN ADVISED OF THE POSSIBILITY OF SUCH DAMAGES. IN NO EVENT WILL LINKSYS' LIABILITY EXCEED THE AMOUNT PAID BY YOU FOR THE PRODUCT. The foregoing limitations will apply even if any warranty or remedy provided under this Agreement fails of its essential purpose. Some jurisdictions do not allow the exclusion or limitation of incidental or consequential damages, so the above limitation or exclusion may not apply to You.

This Warranty is valid and may be processed only in the country of purchase.

Please direct all inquiries to: Linksys, P.O. Box 18558, Irvine, CA 92623.

Appendix G: Regulatory Information

FCC Statement

This product has been tested and complies with the specifications for a Class B digital device, pursuant to Part 15 of the FCC Rules. These limits are designed to provide reasonable protection against harmful interference in a residential installation. This equipment generates, uses, and can radiate radio frequency energy and, if not installed and used according to the instructions, may cause harmful interference to radio communications. However, there is no guarantee that interference will not occur in a particular installation. If this equipment does cause harmful interference to radio or television reception, which is found by turning the equipment off and on, the user is encouraged to try to correct the interference by one or more of the following measures:

- Reorient or relocate the receiving antenna
- Increase the separation between the equipment or devices
- Connect the equipment to an outlet other than the receiver's
- Consult a dealer or an experienced radio/TV technician for assistance

FCC Radiation Exposure Statement

This equipment complies with FCC radiation exposure limits set forth for an uncontrolled environment. This equipment should be installed and operated with minimum distance 20cm between the radiator and your body.

Industry Canada (Canada)

This Class B digital apparatus complies with Canadian ICES-003, RSS210.

Cet appareil numérique de la classe B est conforme à la norme NMB-003 du Canada.

The use of this device in a system operating either partially or completely outdoors may require the user to obtain a license for the system according to the Canadian regulations.

Compliance Information for 2.4-GHz Wireless Products Relevant to the EU and Other Countries Following EU Directive 1999/5/EC (R&TTE Directive)

Declaration of Conformity with Regard to the EU Directive 1999/5/EC (R&TTE Directive)

Deutsch [German]:	Dieses Gerät entspricht den grundlegenden Anforderungen und den weiteren entsprechenden Vorgaben der Richtlinie 1999/5/EU.
Dansk [Danish]:	Dette udstyr er i overensstemmelse med de væsentlige krav og andre relevante bestemmelser i Direktiv 1999/5/EF.
English:	This equipment is in compliance with the essential requirements and other relevant provisions of Directive 1999/5/EC.
Español [Spanish]:	Este equipo cumple con los requisitos esenciales así como con otras disposiciones de la Directiva 1999/5/CE.
Ελληνική [Greek]:	Αυτός ο εξοπλισμός είναι σε συμμόρφωση με τις ουσιαστικές απαιτήσεις και άλλες σχετικές διατάξεις της Οδηγίας 1999/5/ΕΚ.
Français [French]:	Cet appareil est conforme aux exigences essentielles et aux autres dispositions pertinentes de la Directive 1999/5/EC.
Íslenska [Icelandic]:	Þetta tæki er samkvæmt grunnkröfum og öðrum viðeigandi ákvæðum Tilskipunar 1999/5/EC.
Italiano [Italian]:	Questo apparato é conforme ai requisiti essenziali ed agli altri principi sanciti dalla Direttiva 1999/5/CE.
Nederlands [Dutch]:	Dit apparaat voldoet aan de essentiële eisen en andere van toepassing zijnde bepalingen van de Richtlijn 1999/5/EC.
Norsk [Norwegian]:	Dette utstyret er i samsvar med de grunnleggende krav og andre relevante bestemmelser i EU-direktiv 1999/5/EF.
Português [Portuguese]:	Este equipamento está em conformidade com os requisitos essenciais e outras provisões relevantes da Directiva 1999/5/EC.
Suomi [Finnish]:	Tämä laite täyttää direktiivin 1999/5/EY olennaiset vaatimukset ja on siinä asetettujen muiden laitetta koskevien määräysten mukainen.
Svenska [Swedish]:	Denna utrustning är i överensstämmelse med de väsentliga kraven och andra relevanta bestämmelser i Direktiv 1999/5/EC.

NOTE: If you need any technical documentation, see the “How to Access Technical Documents on www.linksys.com/international” section for more information.

Wireless-B USB Network Adapter

The following standards were applied during the assessment of the product against the requirements of the Directive 1999/5/EC:

- Radio: EN 300.328
- EMC: EN 301 489-1, EN 301 489-17
- Safety: EN 60950

CE Marking

For the Linksys Wireless-B and Wireless-G products, the following CE mark, notified body number (where applicable), and class 2 identifier are added to the equipment.

CE 0560 ⓘ or CE 0678 ⓘ or CE ⓘ

Check the CE label on the product to find out which notified body was involved during the assessment.

National Restrictions

This product may be used in all EU countries (and other countries following the EU directive 1999/5/EC) without any limitation except for the countries mentioned below:

Ce produit peut être utilisé dans tous les pays de l'UE (et dans tous les pays ayant transposés la directive 1999/5/CE) sans aucune limitation, excepté pour les pays mentionnés ci-dessous:

Questo prodotto è utilizzabile in tutte i paesi EU (ed in tutti gli altri paesi che seguono le direttive EU 1999/5/EC) senza nessuna limitazione, eccetto per i paesi menzionati di seguito:

Das Produkt kann in allen EU Staaten ohne Einschränkungen eingesetzt werden (sowie in anderen Staaten die der EU Direktive 1995/5/CE folgen) mit Ausnahme der folgenden aufgeführten Staaten:

Belgium

Outdoor wireless links with a range in excess of 300 meters need to be notified at the Belgian Institute for Postal Services and Telecommunications (BIPT). Please check <http://www.bipt.be> for more details.

Draadloze verbindingen voor buitengebruik en met een reikwijdte van meer dan 300 meter dienen aangemeld te worden bij het Belgisch Instituut voor postdiensten en telecommunicatie (BIPT). Zie <http://www.bipt.be> voor meer gegevens.

Les liaisons sans fil pour une utilisation en extérieur d'une distance supérieure à 300 mètres doivent être notifiées à l'Institut Belge des services Postaux et des Télécommunications (IBPT). Visitez <http://www.ibpt.be> pour de plus amples détails.

France

In case the product is used outdoors, the output power is restricted in some parts of the band. See Table 1 or check <http://www.art-telecom.fr/> for more details.

Dans la cas d'une utilisation en extérieur, la puissance de sortie est limitée pour certaines parties de la bande. Reportez-vous à la table 1 ou visitez <http://www.art-telecom.fr/> pour de plus amples détails.

Table 1: Applicable Power Levels in France

Location	Frequency Range (MHz)	Power (EIRP)
Indoor (No restrictions)	2400-2483.5	100 mW (20 dBm)
Outdoor	2400-2454 2454-2483.5	100 mW (20 dBm) 10 mW (10 dBm)

Italy

This product meets the National Radio Interface and the requirements specified in the National Frequency Allocation Table for Italy. Unless operating within the boundaries of the owner's property, the use of this 2.4 GHz Wireless LAN product requires a 'general authorization'. Please check with <http://www.comunicazioni.it/it/> for more details.

Questo prodotto è conforme alla specifiche di Interfaccia Radio Nazionali e rispetta il Piano Nazionale di ripartizione delle frequenze in Italia. Se non viene installato all'interno del proprio fondo, l'utilizzo di prodotti Wireless LAN a 2.4 GHz richiede una "Autorizzazione Generale". Consultare <http://www.comunicazioni.it/it/> per maggiori dettagli.

Product Usage Restrictions

This product is designed for indoor usage only. Outdoor usage is not recommended.

This product is designed for use with the included integral or external (dedicated) antenna(s). Use of non-dedicated or third-party antenna(s) is not recommended and is not supported by Linksys.

Power Output of Your Device

To comply with your country's regulations, you may have to change the power output of your wireless device. Proceed to the appropriate section for your device.

Note: The power output setting may not be available on all wireless products. For more information, refer to the documentation on your product's CD or at <http://www.linksys.com/international>.

Wireless Adapters

Wireless adapters have the power output set to 100% by default. Maximum power output on each adapter does not exceed 20 dBm (100 mW); it is generally 18 dBm (64 mW) or below. If you need to alter your wireless adapter's power output, follow the appropriate instructions for your computer's Windows operating system:

Windows XP

1. Double-click the **Wireless** icon in your desktop's system tray.
2. Open the *Wireless Network Connection* window.
3. Click the **Properties** button.
4. Select the **General** tab, and click the **Configure** button.
5. In the *Properties* window, click the **Advanced** tab.
6. Select **Power Output**.
7. From the pull-down menu on the right, select the wireless adapter's power output percentage.

Windows 2000

1. Open the **Control Panel**.
2. Double-click **Network and Dial-Up Connections**.
3. Select your current wireless connection, and select **Properties**.
4. From the *Properties* screen, click the **Configure** button.
5. Click the **Advanced** tab, and select **Power Output**.
6. From the pull-down menu on the right, select the wireless adapter's power setting.

If your computer is running Windows Millennium or 98, then refer to Windows Help for instructions on how to access the advanced settings of a network adapter.

Wireless Access Points, Routers, or Other Wireless Products

If you have a wireless access point, router or other wireless product, use its Web-based Utility to configure its power output setting (refer to the product's documentation for more information).

Technical Documents on www.linksys.com/international

Follow these steps to access technical documents:

1. Browse to <http://www.linksys.com/international>.
2. Click the region in which you reside.
3. Click the name of the country in which you reside.
4. Click **Products**.
5. Click the appropriate product category.
6. Select a product.
7. Click the type of documentation you want. The document will automatically open in PDF format.

Note: If you have questions regarding the compliance of these products or you cannot find the information you are looking for, please contact your local sales office. Visit <http://www.linksys.com/international> for more details.

Appendix H: Contact Information

Need to contact Linksys?

Visit us online for information on the latest products and updates to your existing products at:

<http://www.linksys.com/international>

If you experience problems with any Linksys product, you can e-mail us at:

In Europe	E-mail Address
Austria	support.at@linksys.com
Belgium	support.be@linksys.com
Denmark	support.dk@linksys.com
France	support.fr@linksys.com
Germany	support.de@linksys.com
Italy	support.it@linksys.com
Netherlands	support.nl@linksys.com
Norway	support.no@linksys.com
Portugal	support.pt@linksys.com
Spain	support.es@linksys.com
Sweden	support.se@linksys.com
Switzerland	support.ch@linksys.com
United Kingdom & Ireland	support.uk@linksys.com

Outside of Europe	E-mail Address
Latin America	support.la@linksys.com
U.S. and Canada	support@linksys.com