

LINKSYS® Quick Installation

This Quick Installation is meant to help you install the product quickly and easily. For detailed instructions on installation, configuration, and further setup options, please consult the User Guide.

Instant Wireless® Series

Wireless-G PCI Adapter



WMP54G

Package Contents

- Wireless-G PCI Adapter
- External Antenna
- Setup Wizard CD-ROM with User Guide
- Quick Installation and Registration Card

Installation of the WMP54G is different for different versions of Windows.

- For Windows 98SE, Me, and 2000, go to Step 1 and then Step 2.
- For Windows XP, go to Step 2 and then Step 3.

1 Software Installation and Configuration for Windows 98SE, Me, and 2000

Attention Windows XP users: Go directly to Step 2.

A. Insert the Setup Wizard CD-ROM into your CD-ROM drive. The Setup Wizard should run automatically, and the *Welcome* screen should appear. If it does not, click **Start** and choose **Run**. In the field that appears, enter **D:\setup.exe** (if “D” is the letter of your CD-ROM drive).



B

B. Click the **Install** button.

C. After reading the License Agreement, click **Next** if you agree, or **Cancel** to end the installation.



C

D. The Setup Wizard will ask you to choose a wireless mode. Click the **Infrastructure Mode** radio button if you want your wireless computers to network with computers on your wired network using a wireless access point. Click the **Ad-Hoc Mode** radio button if you want multiple wireless computers to network directly with each other.

In the SSID field, enter the **SSID** of your wireless network. The SSID must be identical for all devices in the network. The default setting is **linksys** (all lowercase). For added security, Linksys recommends that you change the default SSID to a unique name.



D

Click **Next** to continue or **Back** to change any of your settings.

E. If you chose Infrastructure Mode, go to Step F now. If you chose Ad-Hoc Mode, select a **Channel** from the list provided. All computers on your wireless network must use the same channel in order to communicate with each other. If you are unsure about which channel to use, select the default channel (Channel 6). Then, select the Network Mode: **Mixed Mode**, which is for both Wireless-G and Wireless-B, or **G-Only Mode**, if there will be no Wireless-B users. Click **Next** to go to Step F or **Back** to change any settings.



E

F. The Setup Wizard will ask you to review your settings before it starts to copy files. Click **Next** if you are satisfied with your settings, or click **Back** to change any settings.



F

G. After the files have been successfully copied, you will see Figure G. Click the **Exit** button.



G

Proceed to Step 2.

Continued on back

2 Connecting the Wireless-G PCI Adapter

1. Turn off your desktop PC.
2. Open your PC case and locate an available PCI slot on the motherboard. Check with your computer manufacturer for instructions.
3. Slide the PCI Adapter into the PCI slot. Make sure that all of its pins are touching the slot's contacts. You may have to apply a bit of pressure to slide the adapter all the way in. After the adapter is firmly in place, secure its fastening tab to your PC's chassis with a mounting screw. Then, close your PC.
4. Attach the external antenna to the adapter's antenna port.
5. Power on your desktop PC.

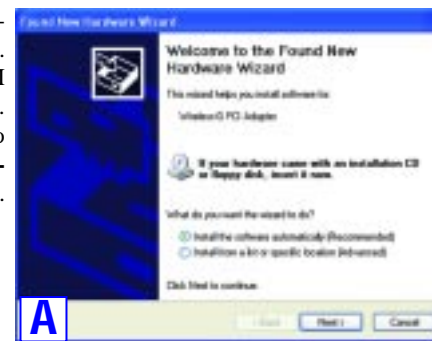
If your PC is using Windows 98SE, Me, or 2000, installation of the Wireless-G PCI Adapter is complete.

If your PC is using Windows XP, proceed to "Step 3: Driver Installation and Configuration for Windows XP"

3 Driver Installation and Configuration for Windows XP

After installing the Adapter in your computer, you will install the driver.

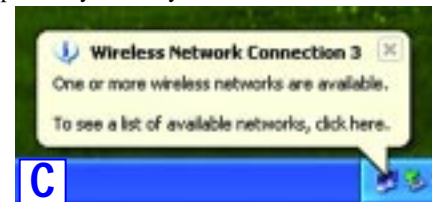
- A. Windows XP will automatically detect the Adapter. Insert the Setup CD-ROM into your CD-ROM drive. Click the radio button next to **Install the software automatically (Recommended)**. Then click **Next**.



- B. When Windows has finished installing the driver, click **Finish**.

Note: Windows XP has a built-in configuration tool. Use Windows XP Wireless Zero Configuration (located in the system tray at the bottom of your screen) to configure the Adapter.

- C. After installing the Adapter, the Windows XP Wireless Zero Configuration icon will appear in your computer's system tray. Double-click the icon.

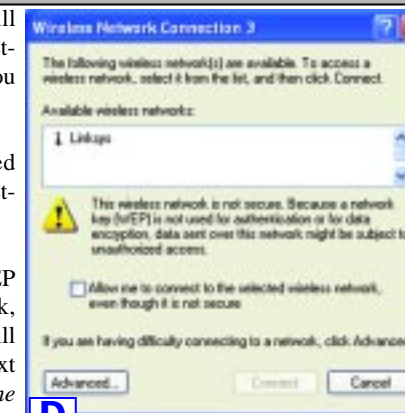


Note: Steps D and E are the instructions and screenshots for Windows XP with Service Pack 1 installed. If you have not installed Service Pack 1, select the network you want, and click the **Connect** button. If the network has WEP encryption enabled, enter the WEP key in the *Network key* field, and then click the **Connect** button.

- D. The screen that appears will show any available wireless network(s). Select the network you want.

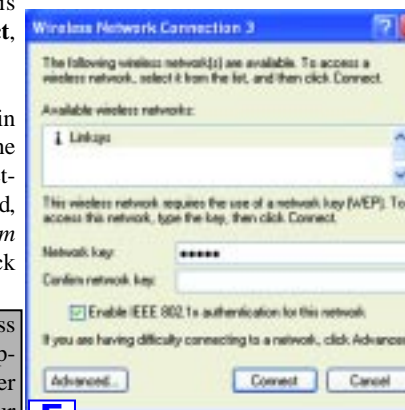
If you have already enabled WEP encryption on your network, skip ahead to step 3.

If you have NOT enabled WEP encryption on your network, then the screen in Figure D will appear. Make sure the box next to *Allow me to connect to the selected wireless network, even though it is not secure* is checked. Then click **Connect**, and go to Step F.

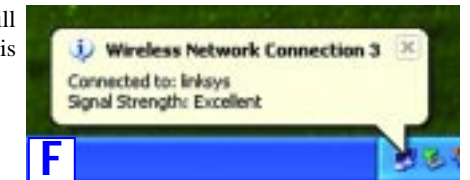


- E. If WEP is enabled, the screen in Figure E will appear. Enter the WEP key of your wireless network in the *Network key* field, and re-enter it in the *Confirm network key* field. Then click **Connect**.

Important: Windows XP Wireless Zero Configuration does not support the use of a passphrase. Enter the exact WEP key used by your access point.



- F. The screen in Figure F will appear if your connection is active.



For more information about WEP, refer to your access point's documentation, or visit www.linksys.com. For more information about wireless networking on a Windows XP computer, enter the keyword **wireless** in the Windows XP search engine.

Windows XP users: Congratulations! The installation of the Wireless-G PCI Adapter is complete.

For additional information or troubleshooting help, refer to the User Guide on the Setup CD-ROM. Assistance is also available from one of these resources:

| | |
|-------------------|--|
| Technical Support | 800-326-7114 (toll-free from US or Canada) |
| E-mail Support | support@linksys.com |
| Website | http://www.linksys.com or http://support.linksys.com |
| FTP Site | ftp://ftp.linksys.com |
| Sales Information | 800-546-5797 (800-LINKSYS) |